

# FOR SALE

---

Boot Court Jeddo Road,  
Shepherd's Bush, W12

---

Flat  
Wendell Park

---

£650,000 lh

---

2  2  1 

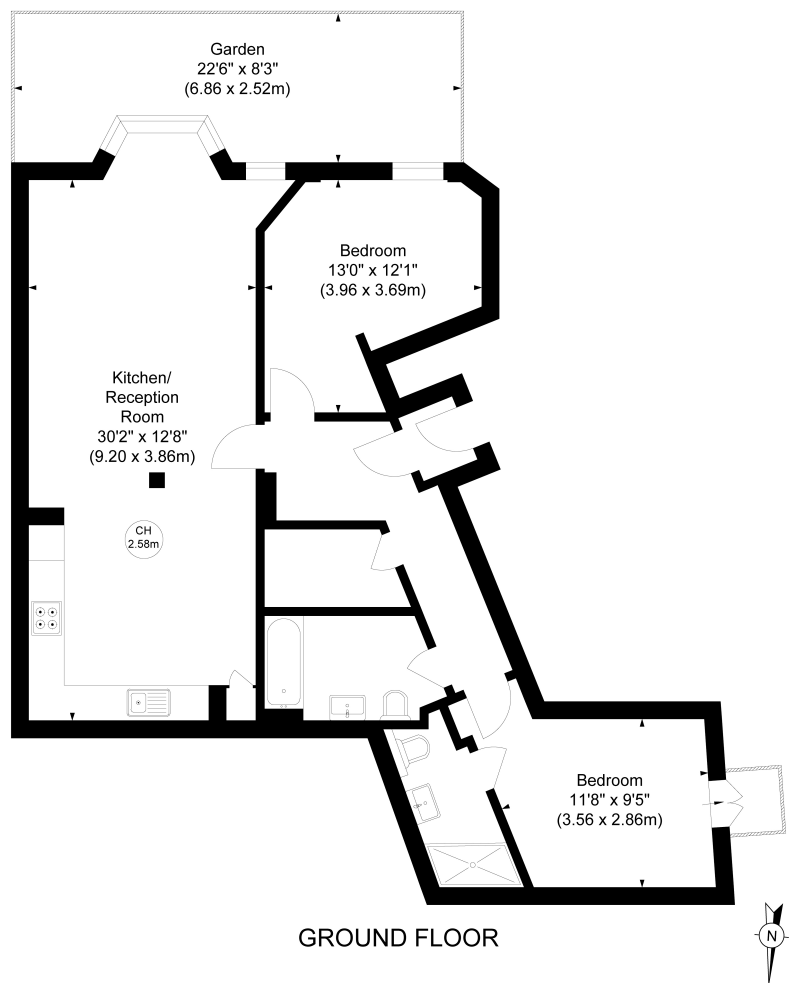


**horton  
andgarton**

SALES / LETTINGS / PROPERTY MANAGEMENT

hortonandgarton.co.uk | Sales 020 8819 0510 | Lettings 020 8819 0511  
172 King Street, Hammersmith, W6 0QU





**horton  
andgarton**

**BOOT COURT, W12**  
APPROXIMATE GROSS INTERNAL AREA  
**903 Sq'/83.92 SqM**

Not to scale, for guidance only and must not be relied upon as a statement of fact.  
All measurements and areas are approximate only



Ground floor purpose built flat | Two bedrooms - Two  
bathrooms | 903 Sq' - 83.82 SqM | Private patio | EPC  
rating B | Wendell Park



hortonandgarton.co.uk  
Sales 020 8819 0510  
Lettings 020 8819 0511

172 King Street, Hammersmith, W6 0QU