



**Oak Tree Close
Rowland's Castle
Hampshire
PO9 6FB**

Offers In Excess Of £314,000

bettermove

Oak Tree Close Rowland's Castle

Bettermove are proud to present this 2 bedroom terraced house in Rowland's Castle.

The property benefits from double glazing, gas central heating throughout and has off street parking available.

The council tax band is D.

The interior of this beautifully presented property comprises a spacious living room, w/c and fitted kitchen on the ground floor. The first floor consists of 2 bedrooms, an en-suite and the family bathroom. The exterior boasts a private rear garden, perfect for enjoying the summer months.

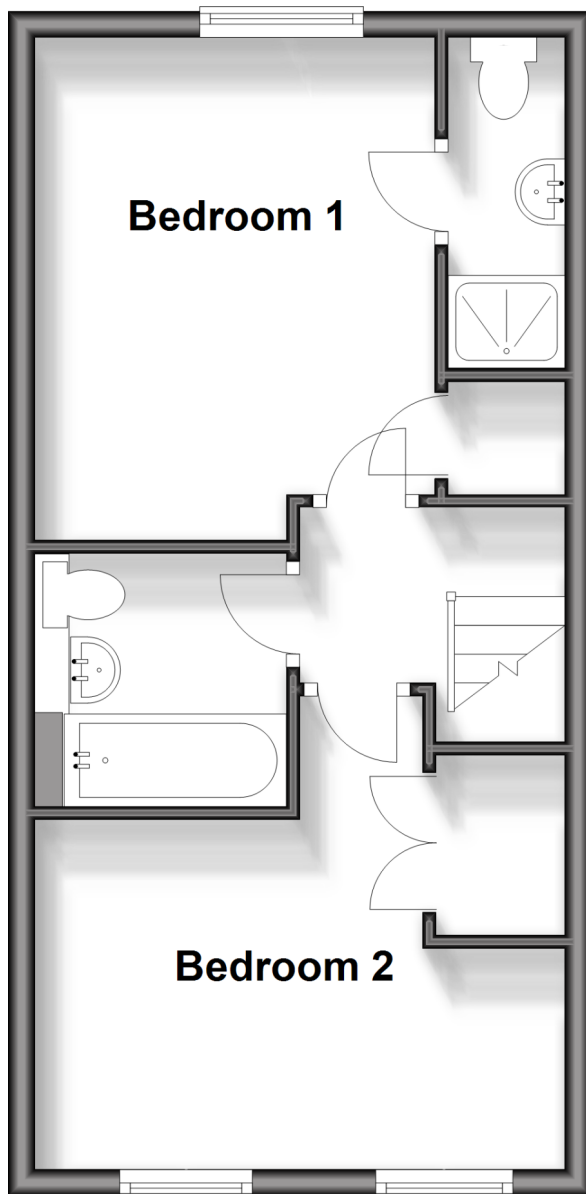
Located in the popular village of Rowland's Castle, the property is close to a range of amenities, including shops, supermarkets, restaurants and pubs. Excellent transport connections can be found from the A3(M), B2148 and local bus routes.

This exciting opportunity should not be missed! All enquiries can be made through Bettermove on 0330 004 0050.



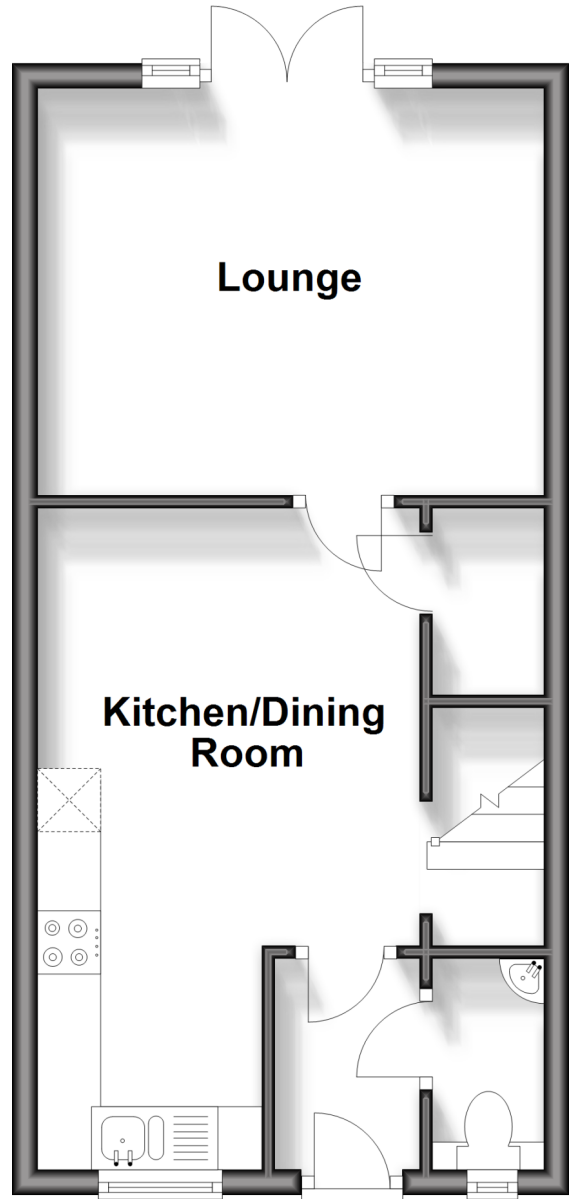
First Floor

Approx. 34.3 sq. metres (369.6 sq. feet)



Ground Floor

Approx. 34.3 sq. metres (369.6 sq. feet)



Energy Efficiency Rating		
	Current	Potential
Very energy efficient - lower running costs		
(92+) A		97
(81-91) B	84	
(69-80) C		
(55-68) D		
(39-54) E		
(21-38) F		
(1-20) G		
Not energy efficient - higher running costs		
England, Scotland & Wales	EU Directive 2002/91/EC	



20-22 Bridge End, Leeds, LS1 4DJ
t: 0330 004 0050 e: hello@bettermove.co.uk
www.bettermove.co.uk