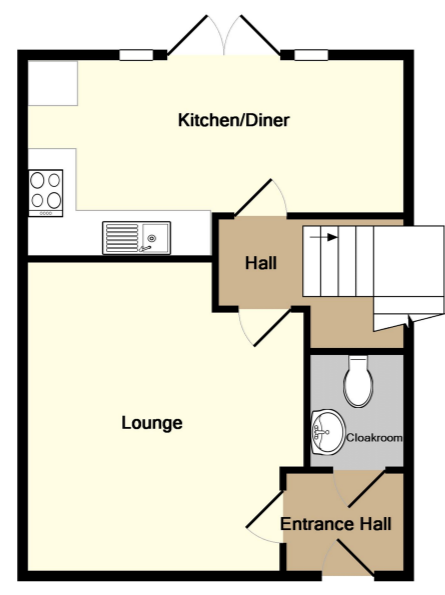
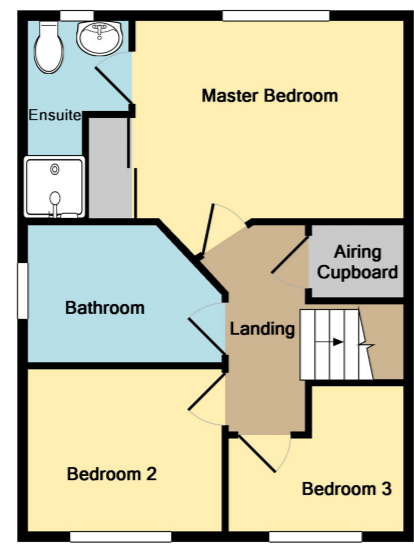


# Floor plans



Ground floor



1st floor

Made with Metropix ©2014



## Interested in this property

Further information and image gallery available on our website at [beebysproperties.co.uk](http://beebysproperties.co.uk).  
Simply contact us for further information or to arrange a viewing:

Tel 01778 369369  
[sales@beebysproperties.co.uk](mailto:sales@beebysproperties.co.uk)

## The small print

**Viewing note**  
If you wish to view this property then please contact Beebys Properties Ltd directly as viewings are strictly by appointment only.

**Important notice**  
In accordance with the Property Misdescriptions Act (1991) these sales particulars are to be taken as a general description of the property and are not part of any offer or contract. All text, measurements and photos are for guidance only and should not be relied upon as fact. None of the services or appliances have been tested by Beebys Properties Ltd. It is the duty of the purchaser to carry out any inspections, surveys and checks of the property. The copyright of all details, photographs and floor plans are exclusive to Beebys Properties Ltd.

**Earl Mews, Market Deeping, PE6**  
£1,100 pcm

EPC Rating: C

			
x3	x1	x2	x1

Tel 01778 369369    [enquiries@beebysproperties.co.uk](mailto:enquiries@beebysproperties.co.uk)  
<http://www.beebysproperties.co.uk>



## Property photographs



## Description

**\*\*THREE BEDROOM END OF TERRACE HOUSE with GARAGE in MARKET DEEPING\*\*** Beebys Property Services are delighted to offer to the rental market this three bedroom house which briefly comprises of cloakroom, lounge, kitchen/diner, three bedrooms (master with en-suite), family bathroom, rear garden and garage. EPC Rating 'On Order'. Council Tax Band 'B'. PETS CONSIDERED.

## Room dimensions

### Cloakroom

Low level WC and wash hand basin

### Lounge (Reception)

4.62m x 3.48m (15' 2" x 11' 5")  
Front aspect window.

### Kitchen/Diner

4.55m x 3.28m (14' 11" x 10' 9")  
Range of base and wall mounted kitchen units with integrated oven and hob. Space for appliances.

### Bedroom 1

3.02m x 2.67m (9' 11" x 8' 9")  
Rear aspect window, Built in wardrobe, door to ensuite.

### Ensuite Shower

Shower cubicle, low level WC and wash hand basin.

### Bedroom 2

2.90m x 2.39m (9' 6" x 7' 10")  
Front aspect window.

### Bedroom 3

2.64m x 2.08m (8' 8" x 6' 10")  
Front aspect window.

### Bathroom

Low level WC, wash hand basin and bath.

### Garden

Mainly laid to lawn

### Garage

Up and Over Door.

### Heating

Mains gas central heating.

## Energy Performance Certificate

