

DARGLOBAL

OH  
SO  
CLOSE

PREMIUM APARTMENTS  
-  
EALING LONDON



# THE HEART OF THE CAPITAL A STØNE'S THRØW AWAY

The information in this document is indicative and is intended to act as a guide only as to the finished product. Accordingly, the finished product may vary from the information provided. These particulars should not be relied upon as statements of fact or representations and applicants must satisfy themselves by inspection or otherwise as to their correctness. This information does not constitute a contract or warranty. All computer generated images and lifestyle photography are indicative only.



# MINUTES TO THE MAGIC OF THE CITY OF LONDON





BE IT FOR  
FINDING LIFE'S  
PERFECT BALANCE





OR UNLEASHING  
THE POWER OF  
PLEASURE  
AND CULTURE!



# UNLOCK SERENITY MOMENTS FROM CENTRAL LONDON





OH  
SO  
CLOSE

PREMIUM APARTMENTS  
EALING - LONDON



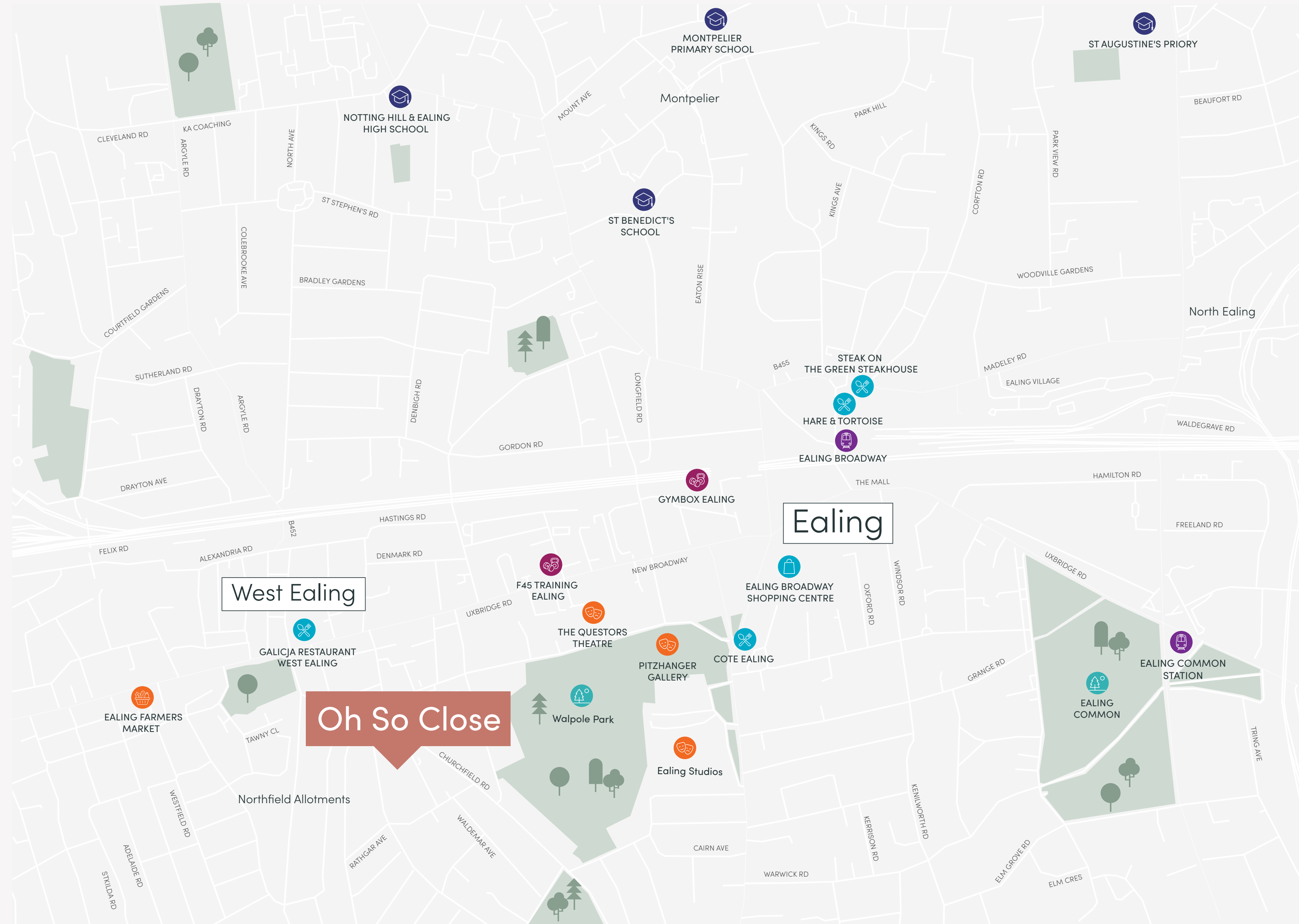
# CULTURE, CØMMUNITY, AND CØNVENIENCE AT YOUR DOØRSTEP

Escape the hustle and bustle of Central London and discover an exclusive oasis in the heart of Ealing, West London with Oh So Close.

Nestled just steps away from the picturesque Walpole Park and serene Lammas Park, this prestigious property offers the perfect combination of tranquillity and convenience.



# LOCATION



## TRANSPORTATION

- Ealing Broadway Station
- Ealing Common Station

## FITNESS

- Gymbox
- F45 Training

## RESTAURANTS & ENTERTAINMENT

- Cote
- Galicja Restaurant
- Hare & Tortoise
- Steak on the Green Steakhouse
- Ealing Broadway shopping centre

## CULTURE

- Ealing Studios
- Ealing Farmer's Market
- Pitzhanger Gallery
- Questors Theatre

## GREEN SPACES

- Ealing Common
- Walpole Park

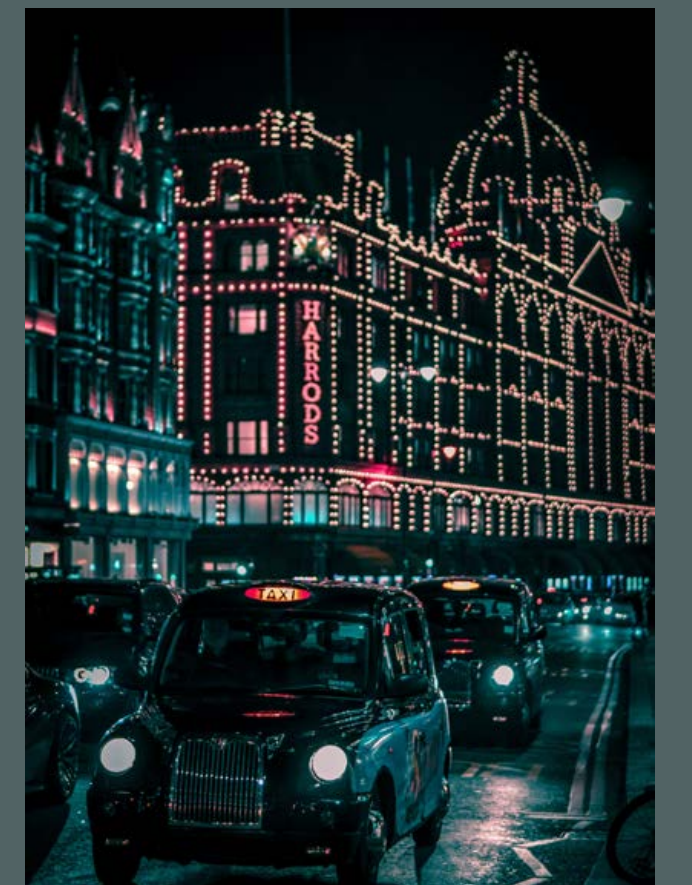
## SCHOOLS

- Notting Hill & Ealing High School
- St Benedict's School
- St Augustine's Priory
- Montpelier Primary School



## THE VERY ESSENCE OF METROPOLITAN LIVING




Located just a short distance from Central London, this serene sanctuary offers the perfect balance of convenience and relaxation.





## IDYLIC LOCATION TO CALL HOME

With the West Ealing Station just a short 10-minute walk away, Central London becomes effortlessly accessible in just under 20 minutes via the newly opened Elizabeth line. Plus, with easy access to the M4 motorway and excellent transportation options, commuting further into the city has never been easier.

- 
**ELIZABETH LINE**  
 8 min LONDON PADDINGTON  
 12 min HEATHROW AIRPORT  
 16 min BOND STREET  
 16 min TOTTENHAM COURT ROAD
- 
**CENTRAL LINE**  
 9 min NOTTING HILL GATE  
 16 min BOND STREET
- 
**DISTRICT LINE**  
 28 min SLOANE SQUARE  
 35 min WESTMINSTER
- 
**GREAT WESTERN RAILWAY**  
 11 min LONDON PADDINGTON  
 40 min READING

# A FAST CONNECTION FOR WORK AND PLAY

Welcome to the mesmerizing allure of London, where the world's most charming city center beckons you for business and pleasure. Whether you're a trailblazing entrepreneur, a connoisseur of art and adventure, or a seeker of culinary delights and captivating spectacles, the pulsating vitality and cosmopolitan enchantment of central London awaits your presence.





DISCØVER YOUR  
OH SO CLOSE  
NEIGHBOURHOOD





Oh So Close welcomes you to an exceptional residential experience that effortlessly combines contemporary aesthetics with the serenity of its green and idyllic surroundings.

**CONVENIENCE  
HAS NEVER LOOKED  
SØ GOOD**



# A NEIGHBORHOOD WITH IT ALL

Ealing, affectionately known as the Queen of the Suburbs, is a true gem in London. Take a stroll down its culturally rich high street and you might just catch a glimpse of a Hollywood star taking a break from filming a hit movie at Ealing Studios, which was home to the award-winning film *Darkest Hour*.





# CØFFEE DELIGHTS AND FRESH FINDS

If coffee and local produce are your thing, then you'll be thrilled to discover the myriad of hip coffee shops and the vibrant Ealing Farmer's Market just a stone's throw away.





## EXPERIENCE THE VIBRANT PULSE OF EALING

With numerous local festivals celebrating everything from jazz to blues, and comedy to beer, there's always something exciting happening in Ealing. And if you're an art enthusiast, you'll love the Pitzhanger Gallery, which showcases the works of up-and-coming artists in stunning Walpole Park, alongside a host of other galleries, museums, and theatres.



## EMPOWERING EDUCATION, ENSURING SAFETY

Ealing prioritizes education and safety, making it an ideal place for residents. With a wide range of schools, colleges, and universities, the borough is committed to providing excellent educational opportunities.

Notably, Ealing has earned its reputation as one of the top 20 safest boroughs in London, providing residents with peace of mind and a secure environment.



OH  
SO  
CLOSE





## TIMELESS ELEGANCE AT OH SO CLOSE

The first thing you notice at Oh So Close is its classic, contemporary exterior, adorned with detailed brick work put down by master craftsmen. A harmonious pair of properties – mirroring each other from the outside – beckons you to indulge in the essence of refined living.

STEP INSIDE THE  
APARTMENTS AT  
OH SO CLOSÉ





Inside you'll find living spaces where modern design, deluxe finishes, and a prime location merge effortlessly to create a residential haven that surpasses all expectations.

With opulent fixtures and wood flooring throughout, these spaces enhance your everyday rituals with an unparalleled sense of beauty.

The striking kitchens feature Italian marble worktops, alongside top-of-the-range appliances and integrated lighting, to give a modern, yet homely aesthetic.









## A SEAMLESS CONNECTION TO NATURE

The lower ground apartments are beautifully designed with spacious living areas and luxurious finishes. From the living room, you can enjoy the tranquil view of the private garden right outside your door, creating a serene atmosphere.





A DEVELOPMENT BY

**DARGLOBAL**



MOUNTBATTEN  
HOMES

# MAKE OH SO CLOSE YOUR HOME

Experience the ideal blend of suburban living and city conveniences with Oh So Close. Nestled within a vibrant community, this exclusive neighborhood boasts exceptional amenities and quick access to the world's greatest capital. Don't miss out on the chance to immerse yourself in this unparalleled lifestyle.

**Welcome to Oh So Close.**

[darglobal.co.uk/oh-so-close/](https://darglobal.co.uk/oh-so-close/)



# FLOOR PLANS

Disclaimer: All pictures, plans, layouts, information, data and details included in this brochure are indicative only and may change at any time up to the final 'as built' status in accordance with final designs of the project, regulatory approvals and planning permissions. All accessories and interior finishes such as wallpaper, chandeliers, furniture, electronics, white goods, curtains, hard and soft landscaping, pavements, features, gym, swimming pool(s) and other elements displayed in the brochure, or between the plot boundary and the unit, are not part of the unit and are shown for illustrative purposes only.

# OH SO CLOSE

- 1 Bedroom

---

- 2 Bedrooms

---

- 2 Bedrooms Duplex

---

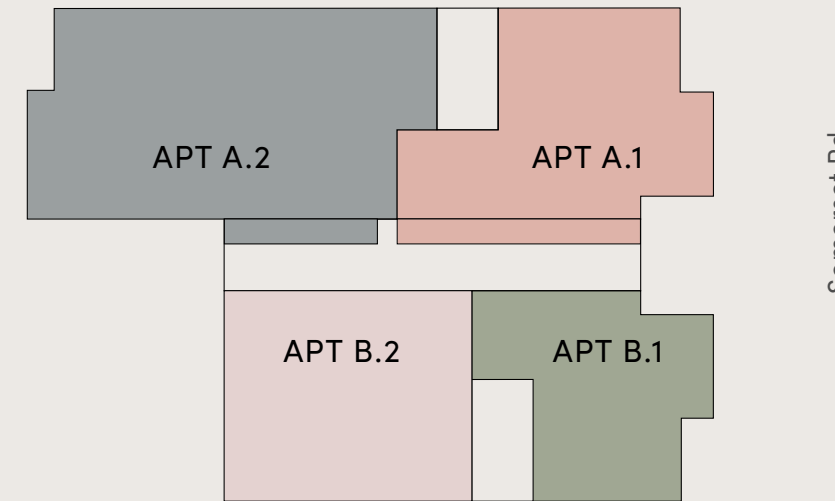
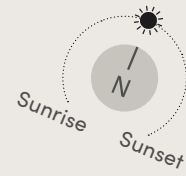
- 3 Bedrooms

---

- 3 Bedrooms Duplex

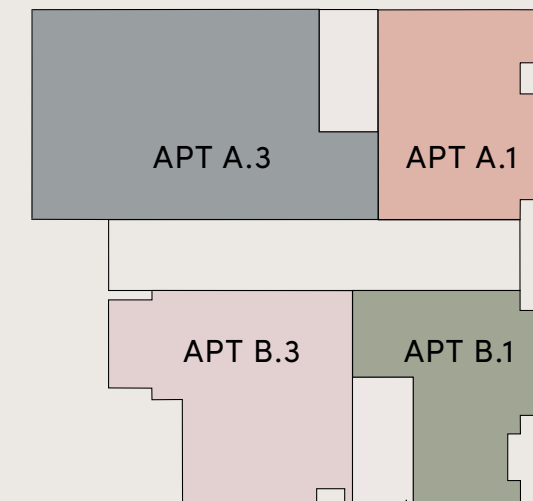
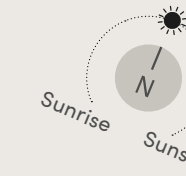
Disclaimer: All pictures, plans, layouts, information, data and details included in this brochure are indicative only and may change at any time up to the final 'as built' status in accordance with final designs of the project, regulatory approvals and planning permissions. All accessories and interior finishes such as wallpaper, chandeliers, furniture, electronics, white goods, curtains, hard and soft landscaping, pavements, features, gym, swimming pool(s) and other elements displayed in the brochure, or within the show apartment or between the plot boundary and the unit, are not part of the unit and are shown for illustrative purposes only.

## LOWER GROUND



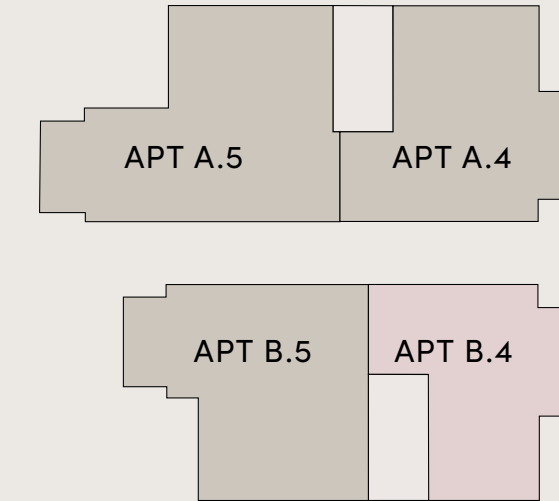
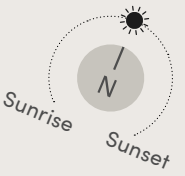
Apt no	Bedrooms	Gross Internal Area
A.1	3 Duplex	1,258 sq ft / 116.9 sq m
A.2	3	1,016 sq ft / 94.4 sq m
B.1	2 Duplex	1,031 sq ft / 95.8 sq m
B.2	1	648 sq ft / 60.2 sq m

## GROUND FLOOR



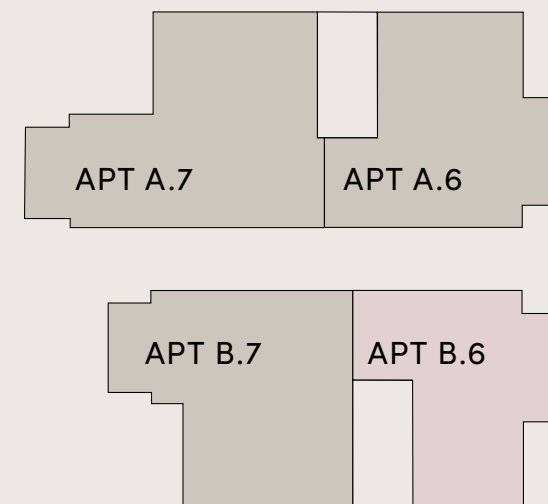
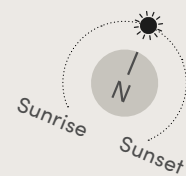
Apt no	Bedrooms	Gross Internal Area
A.1	-	-
A.3	3	927 sq ft / 86.1 sq m
B.1	-	-
B.3	1	565 sq ft / 52.5 sq m

## FIRST FLOOR



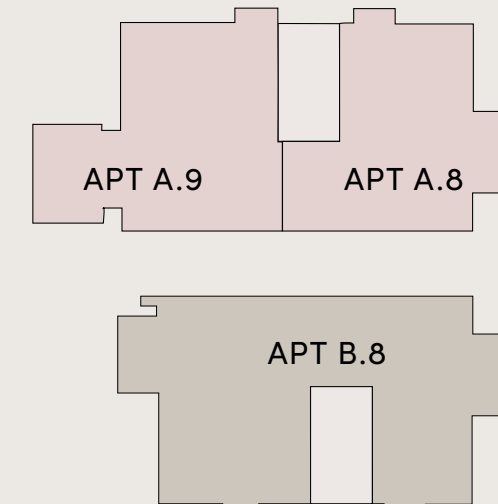
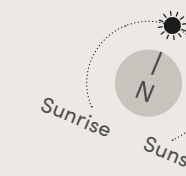
Apt no	Bedrooms	Gross Internal Area
A.4	2	647 sq ft / 60.1 sq m
A.5	2	747 sq ft / 69.4 sq m
B.4	1	527 sq ft / 49 sq m
B.5	2	654 sq ft / 60.8 sq m

## SECOND FLOOR



Apt no	Bedrooms	Gross Internal Area
A.6	2	647 sq ft / 60.1 sq m
A.7	2	747 sq ft / 69.4 sq m
B.6	1	529 sq ft / 49.1 sq m
B.7	2	658 sq ft / 61.1 sq m

## THIRD FLOOR



Apt no	Bedrooms	Gross Internal Area
A.8	1	507 sq ft / 47.1 sq m
A.9	1	518 sq ft / 48.1 sq m
B.8	2	917 sq ft / 85.2 sq m

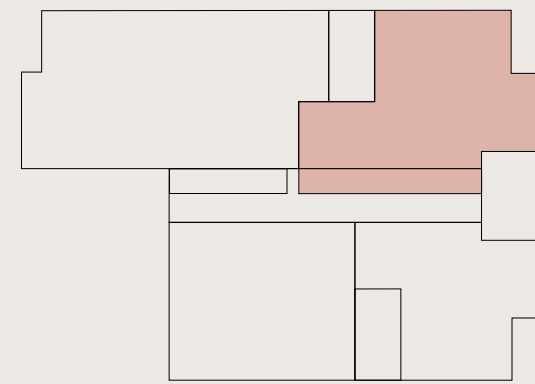
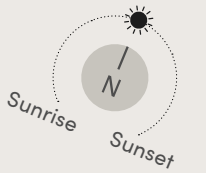
BUILDING A

LOWER GROUND  
GROUND FLOOR

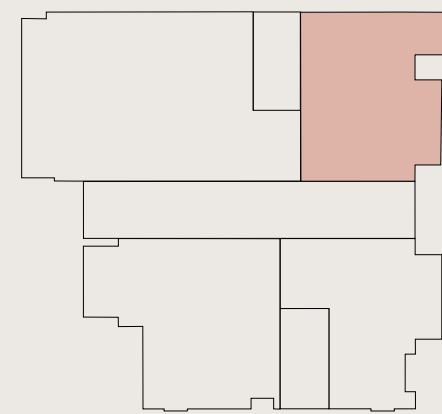
APT No. A.1

3-BEDROOMS DUPLEX

1,258 SQ FT / 116.9 SQ M  
EXCLUDING TERRACE



LOWER GROUND



GROUND FLOOR



LOWER GROUND



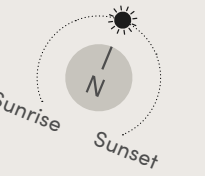
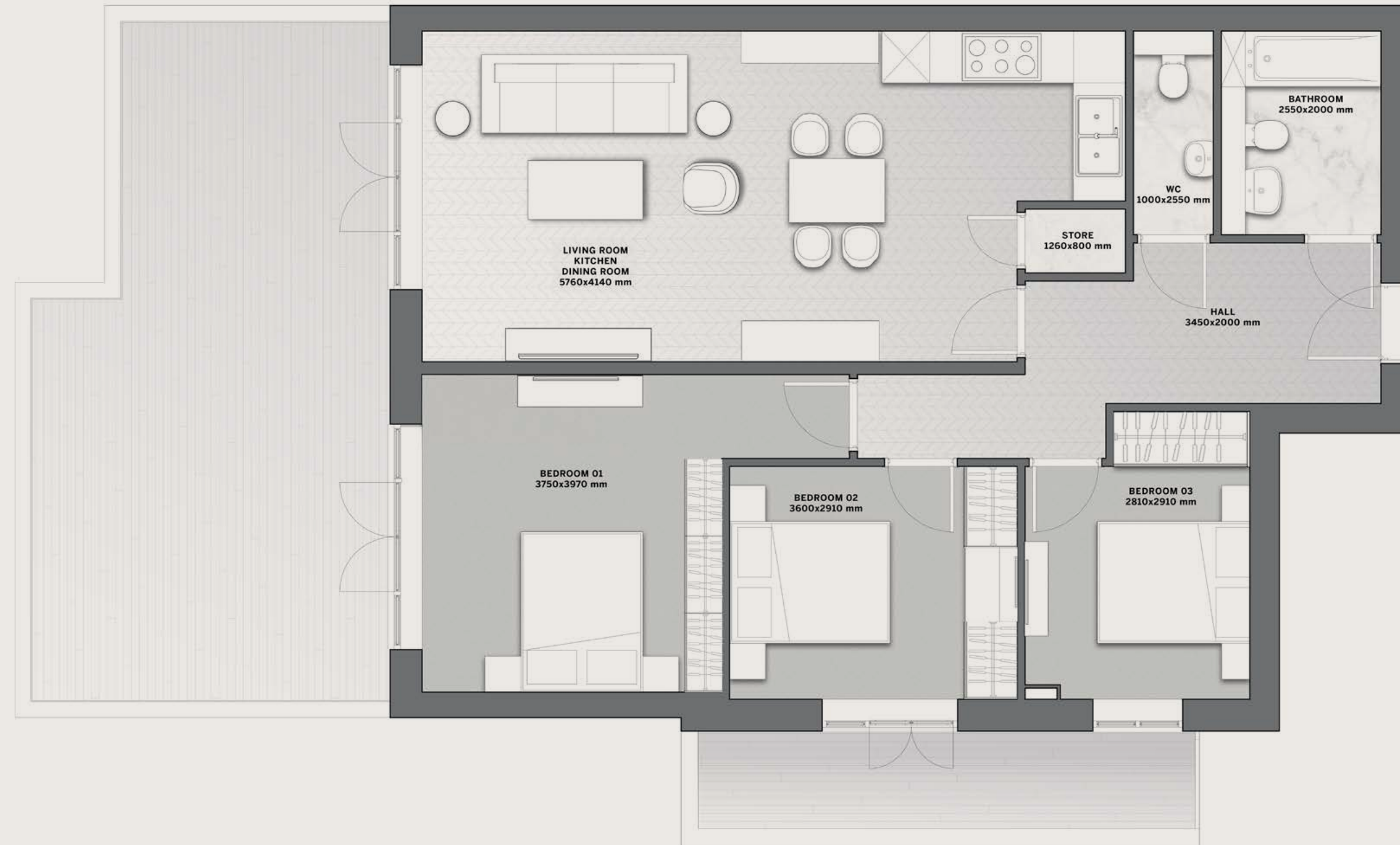
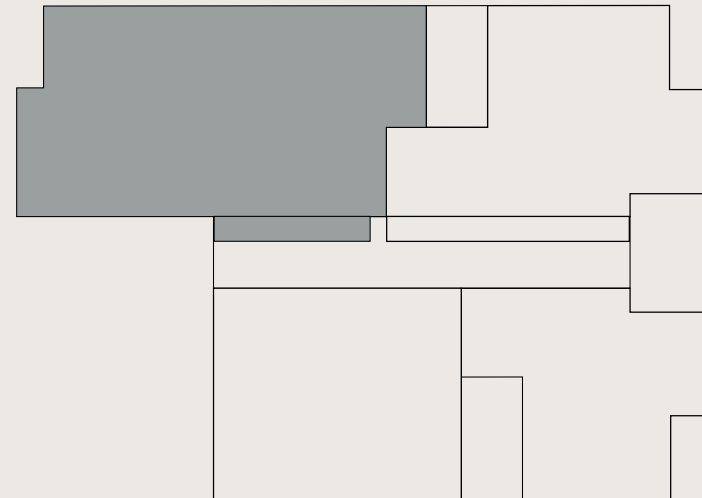
GROUND FLOOR

Disclaimer: All pictures, plans, layouts, information, data and details included in this brochure are indicative only and may change at any time up to the final 'as built' status in accordance with final designs of the project, regulatory approvals and planning permissions. All accessories and interior finishes such as wallpaper, chandeliers, furniture, electronics, white goods, curtains, hard and soft landscaping, pavements, features, gym, swimming pool(s) and other elements displayed in the brochure, or within the show apartment or between the plot boundary and the unit, are not part of the unit and are shown for illustrative purposes only.

BUILDING A  
**LOWER GROUND**

APT No. A.2  
**3-BEDROOMS**

1,016 SQ FT / 94.4 SQ M  
EXCLUDING TERRACE



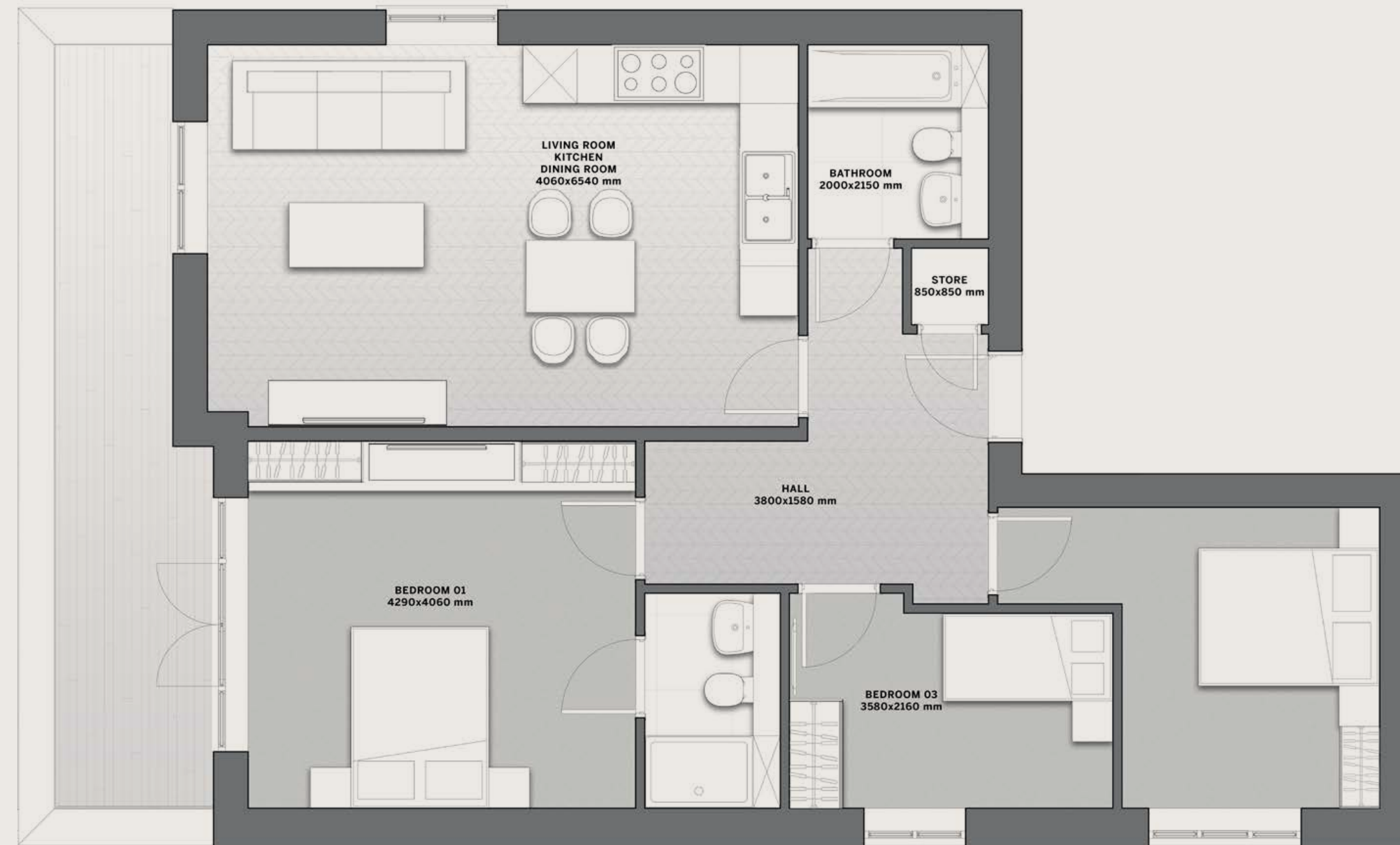
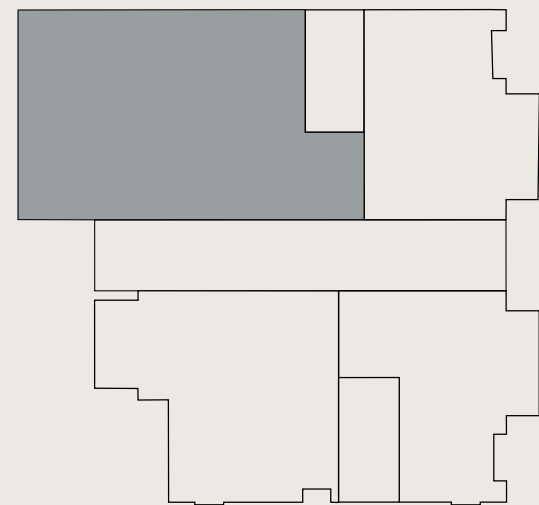
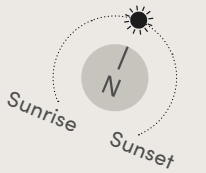
Disclaimer: All pictures, plans, layouts, information, data and details included in this brochure are indicative only and may change at any time up to the final 'as built' status in accordance with final designs of the project, regulatory approvals and planning permissions. All accessories and interior finishes such as wallpaper, chandeliers, furniture, electronics, white goods, curtains, hard and soft landscaping, pavements, features, gym, swimming pool(s) and other elements displayed in the brochure, or within the show apartment or between the plot boundary and the unit, are not part of the unit and are shown for illustrative purposes only.



BUILDING A  
**GROUND FLOOR**

APT No. A.3  
**3-BEDROOMS**

927 SQ FT / 86.1 SQ M  
EXCLUDING TERRACE



Disclaimer: All pictures, plans, layouts, information, data and details included in this brochure are indicative only and may change at any time up to the final 'as built' status in accordance with final designs of the project, regulatory approvals and planning permissions. All accessories and interior finishes such as wallpaper, chandeliers, furniture, electronics, white goods, curtains, hard and soft landscaping, pavements, features, gym, swimming pool(s) and other elements displayed in the brochure, or within the show apartment or between the plot boundary and the unit, are not part of the unit and are shown for illustrative purposes only.

---

BUILDING A  
**FIRST FLOOR**

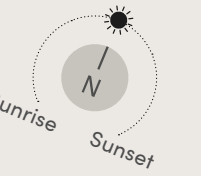
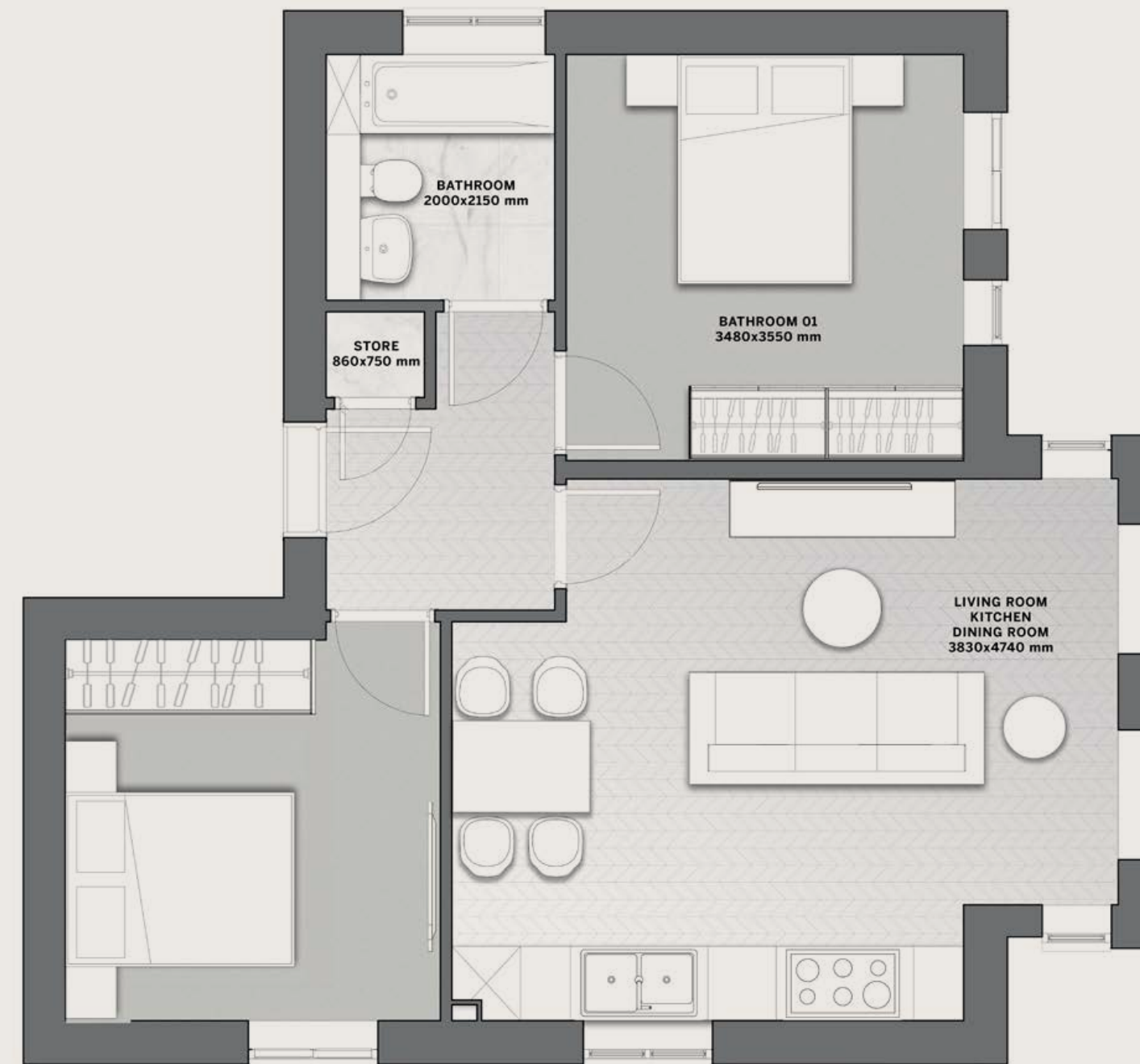
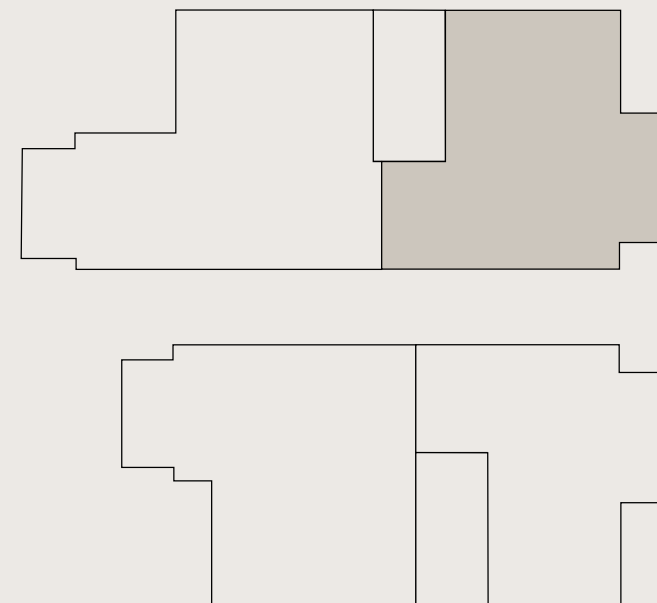
---

APT No. A.4  
**2-BEDROOMS**

---

647 SQ FT / 60.1 SQ M

---



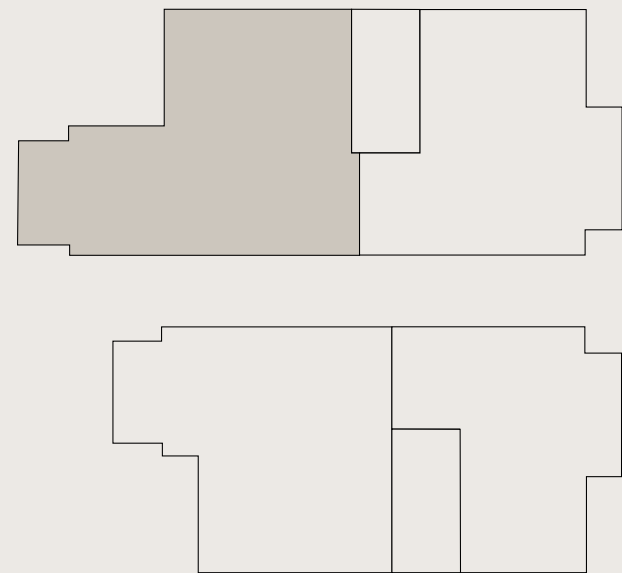
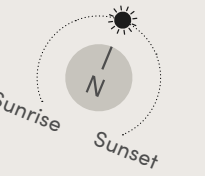
---

**Disclaimer:** All pictures, plans, layouts, information, data and details included in this brochure are indicative only and may change at any time up to the final 'as built' status in accordance with final designs of the project, regulatory approvals and planning permissions. All accessories and interior finishes such as wallpaper, chandeliers, furniture, electronics, white goods, curtains, hard and soft landscaping, pavements, features, gym, swimming pool(s) and other elements displayed in the brochure, or within the show apartment or between the plot boundary and the unit, are not part of the unit and are shown for illustrative purposes only.

BUILDING A  
**FIRST FLOOR**

APT No. A.5  
**2-BEDROOMS**

747 SQ FT / 69.4 SQ M  
EXCLUDING BALCONY



Disclaimer: All pictures, plans, layouts, information, data and details included in this brochure are indicative only and may change at any time up to the final 'as built' status in accordance with final designs of the project, regulatory approvals and planning permissions. All accessories and interior finishes such as wallpaper, chandeliers, furniture, electronics, white goods, curtains, hard and soft landscaping, pavements, features, gym, swimming pool(s) and other elements displayed in the brochure, or within the show apartment or between the plot boundary and the unit, are not part of the unit and are shown for illustrative purposes only.

---

BUILDING A  
**SECOND FLOOR**

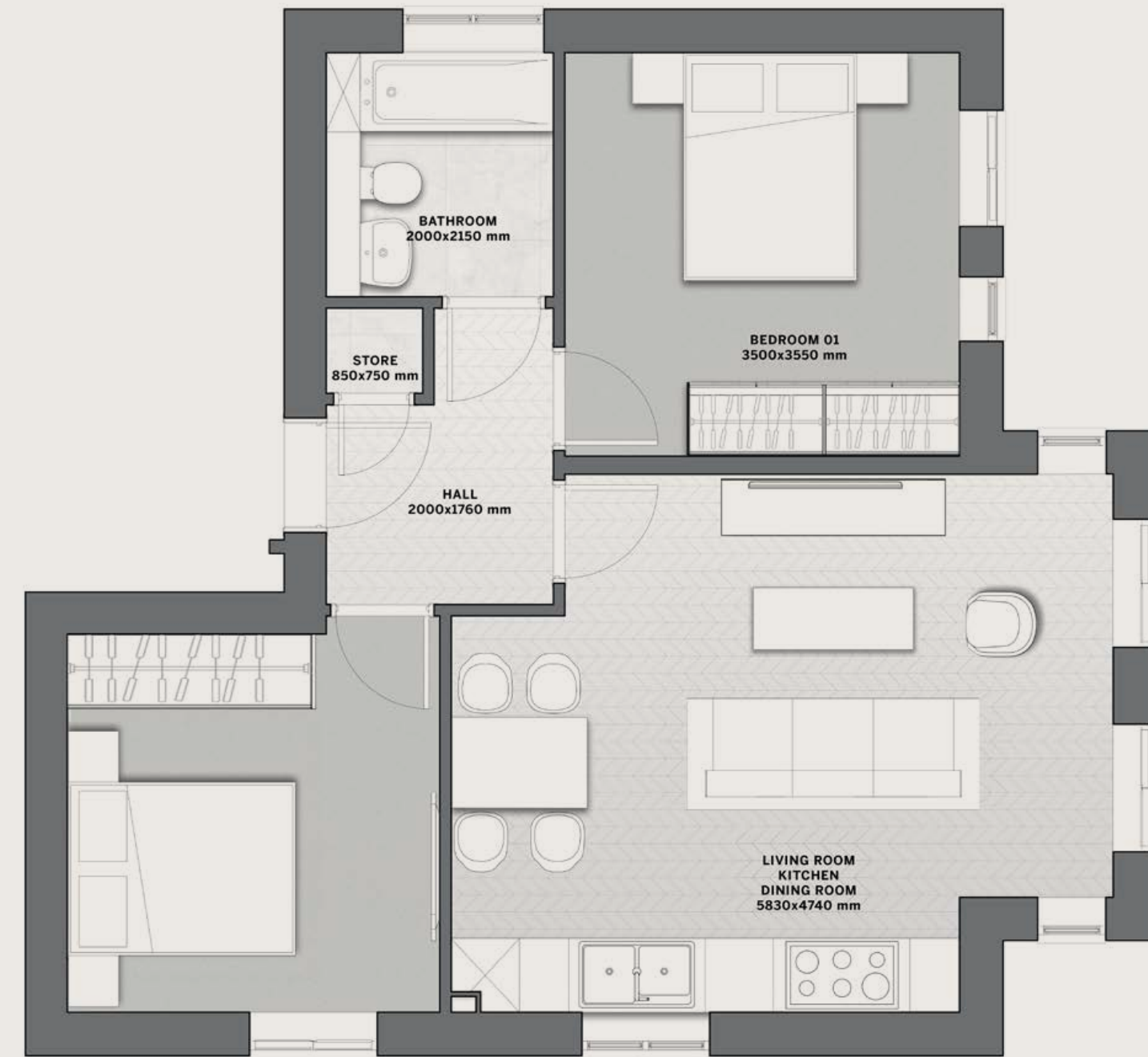
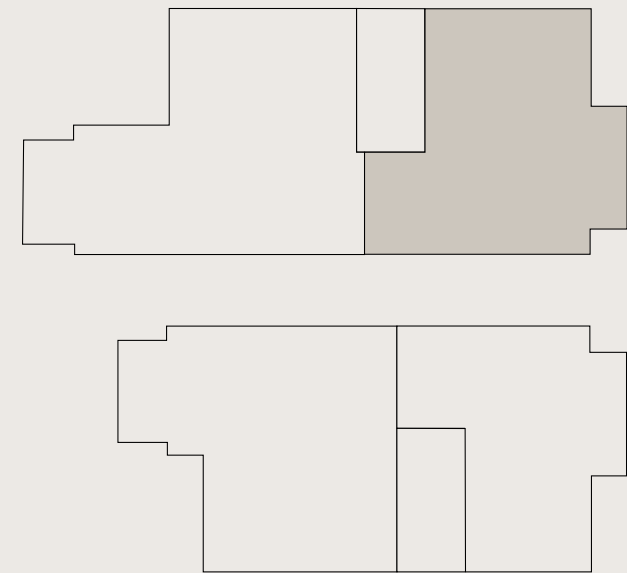
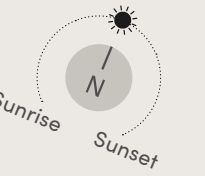
---

APT No. A.6  
**2-BEDROOMS**

---

647 SQ FT / 60.1 SQ M

---



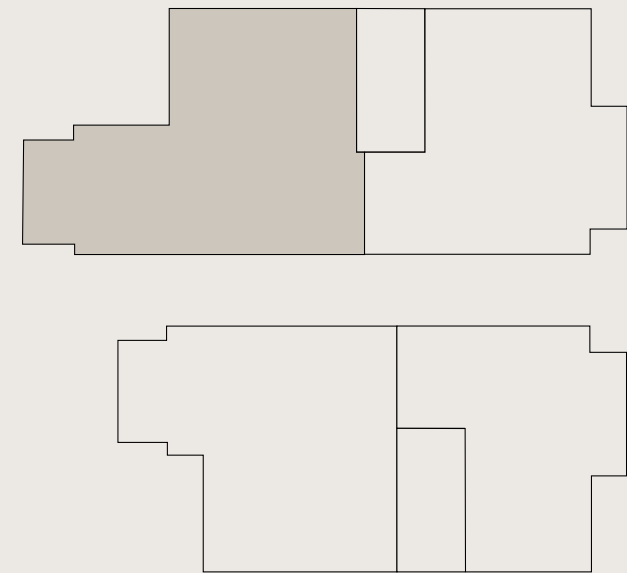
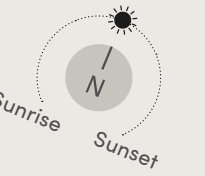
---

Disclaimer: All pictures, plans, layouts, information, data and details included in this brochure are indicative only and may change at any time up to the final 'as built' status in accordance with final designs of the project, regulatory approvals and planning permissions. All accessories and interior finishes such as wallpaper, chandeliers, furniture, electronics, white goods, curtains, hard and soft landscaping, pavements, features, gym, swimming pool(s) and other elements displayed in the brochure, or within the show apartment or between the plot boundary and the unit, are not part of the unit and are shown for illustrative purposes only.

BUILDING A  
**SECOND FLOOR**

APT No. A.7  
**2-BEDROOMS**

747 SQ FT / 69.4 SQ M  
EXCLUDING BALCONY

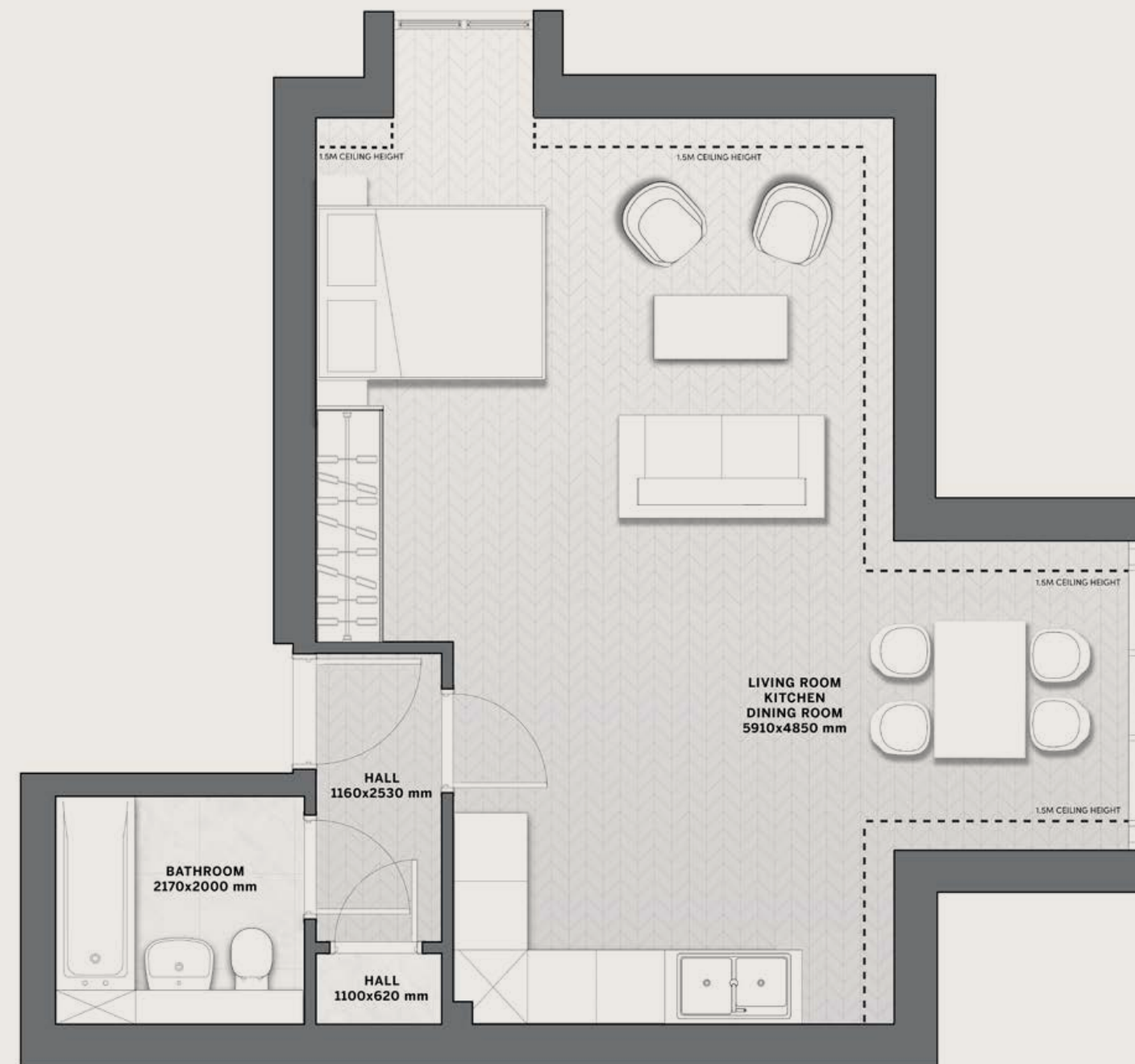
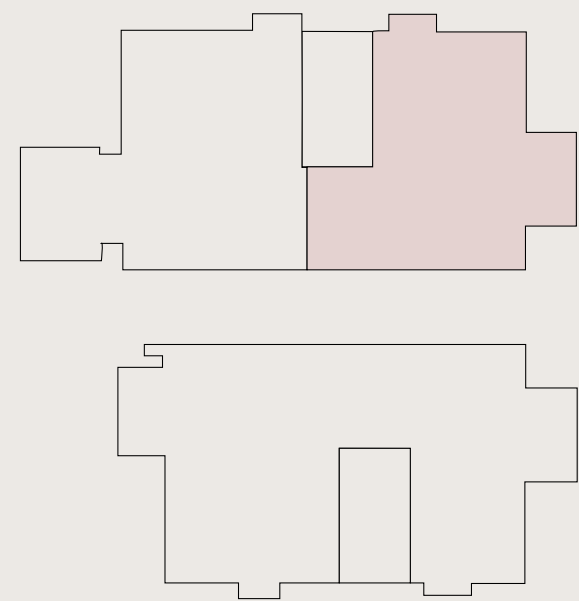
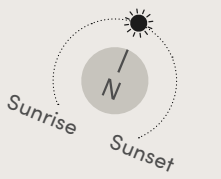


Disclaimer: All pictures, plans, layouts, information, data and details included in this brochure are indicative only and may change at any time up to the final 'as built' status in accordance with final designs of the project, regulatory approvals and planning permissions. All accessories and interior finishes such as wallpaper, chandeliers, furniture, electronics, white goods, curtains, hard and soft landscaping, pavements, features, gym, swimming pool(s) and other elements displayed in the brochure, or within the show apartment or between the plot boundary and the unit, are not part of the unit and are shown for illustrative purposes only.

BUILDING A  
**THIRD FLOOR**

APT No. A.8  
**1-BEDROOM**

507 SQ FT / 47.1 SQ M

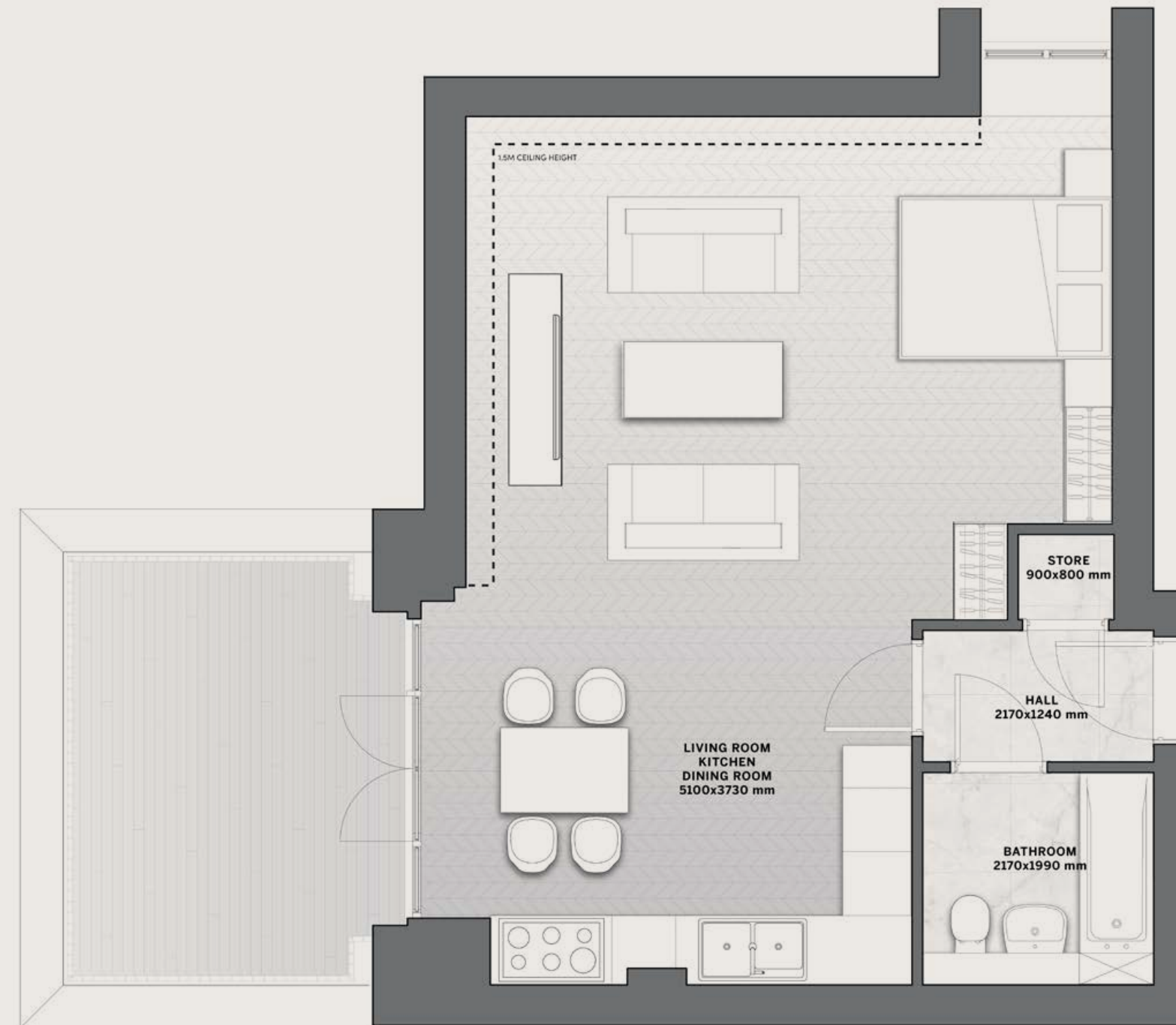
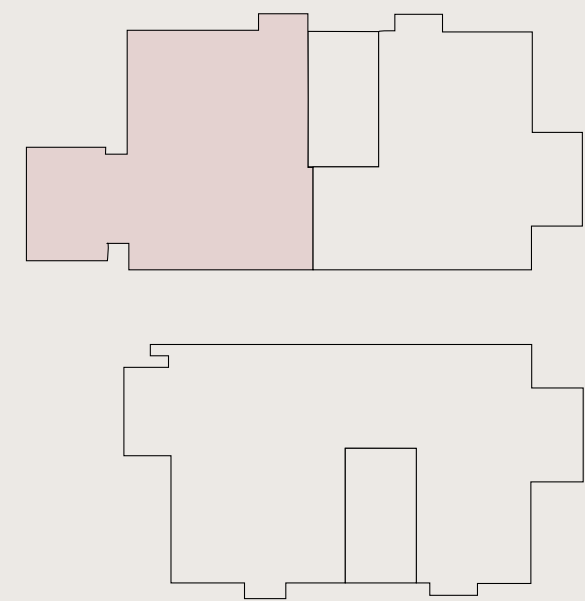


Disclaimer: All pictures, plans, layouts, information, data and details included in this brochure are indicative only and may change at any time up to the final 'as built' status in accordance with final designs of the project, regulatory approvals and planning permissions. All accessories and interior finishes such as wallpaper, chandeliers, furniture, electronics, white goods, curtains, hard and soft landscaping, pavements, features, gym, swimming pool(s) and other elements displayed in the brochure, or within the show apartment or between the plot boundary and the unit, are not part of the unit and are shown for illustrative purposes only.

BUILDING A  
**THIRD FLOOR**

APT No. A.9  
**1-BEDROOM**

518 SQ FT / 48.1 SQ M  
EXCLUDING TERRACE



Disclaimer: All pictures, plans, layouts, information, data and details included in this brochure are indicative only and may change at any time up to the final 'as built' status in accordance with final designs of the project, regulatory approvals and planning permissions. All accessories and interior finishes such as wallpaper, chandeliers, furniture, electronics, white goods, curtains, hard and soft landscaping, pavements, features, gym, swimming pool(s) and other elements displayed in the brochure, or within the show apartment or between the plot boundary and the unit, are not part of the unit and are shown for illustrative purposes only.

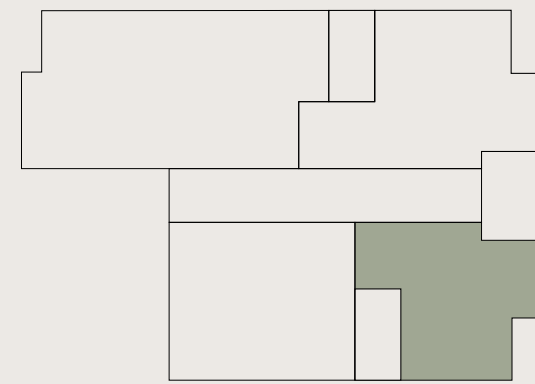
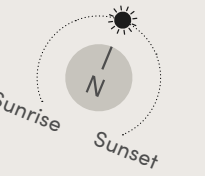
BUILDING B

LOWER GROUND  
GROUND FLOOR

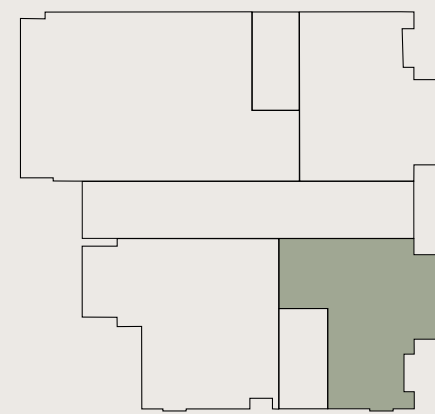
APT No. B.1

2-BEDROOMS DUPLEX

1,031 SQ FT / 95.8 SQ M  
EXCLUDING TERRACE



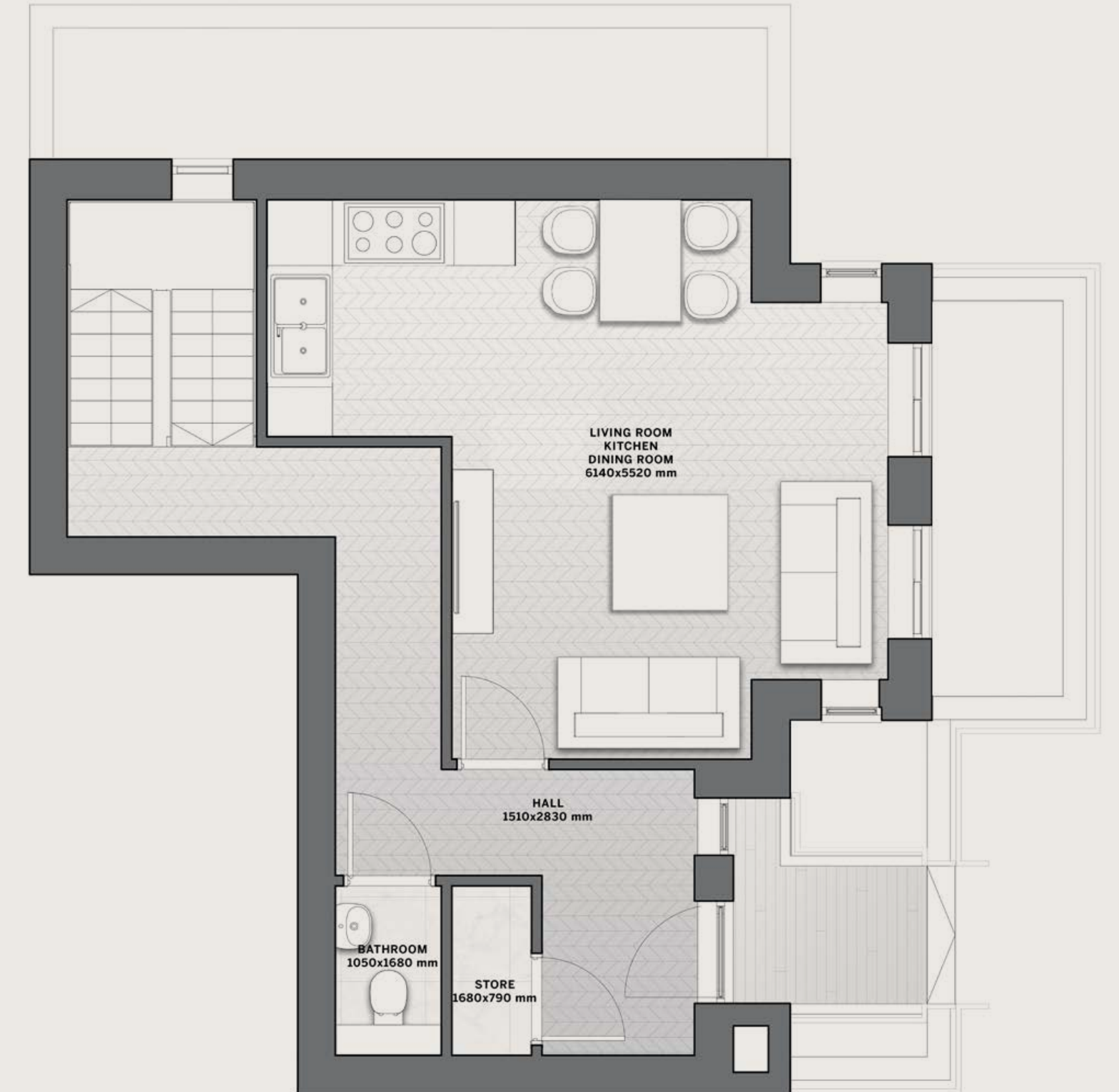
LOWER GROUND



GROUND FLOOR



LOWER GROUND



GROUND FLOOR

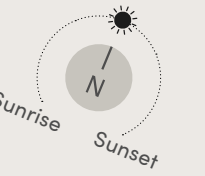
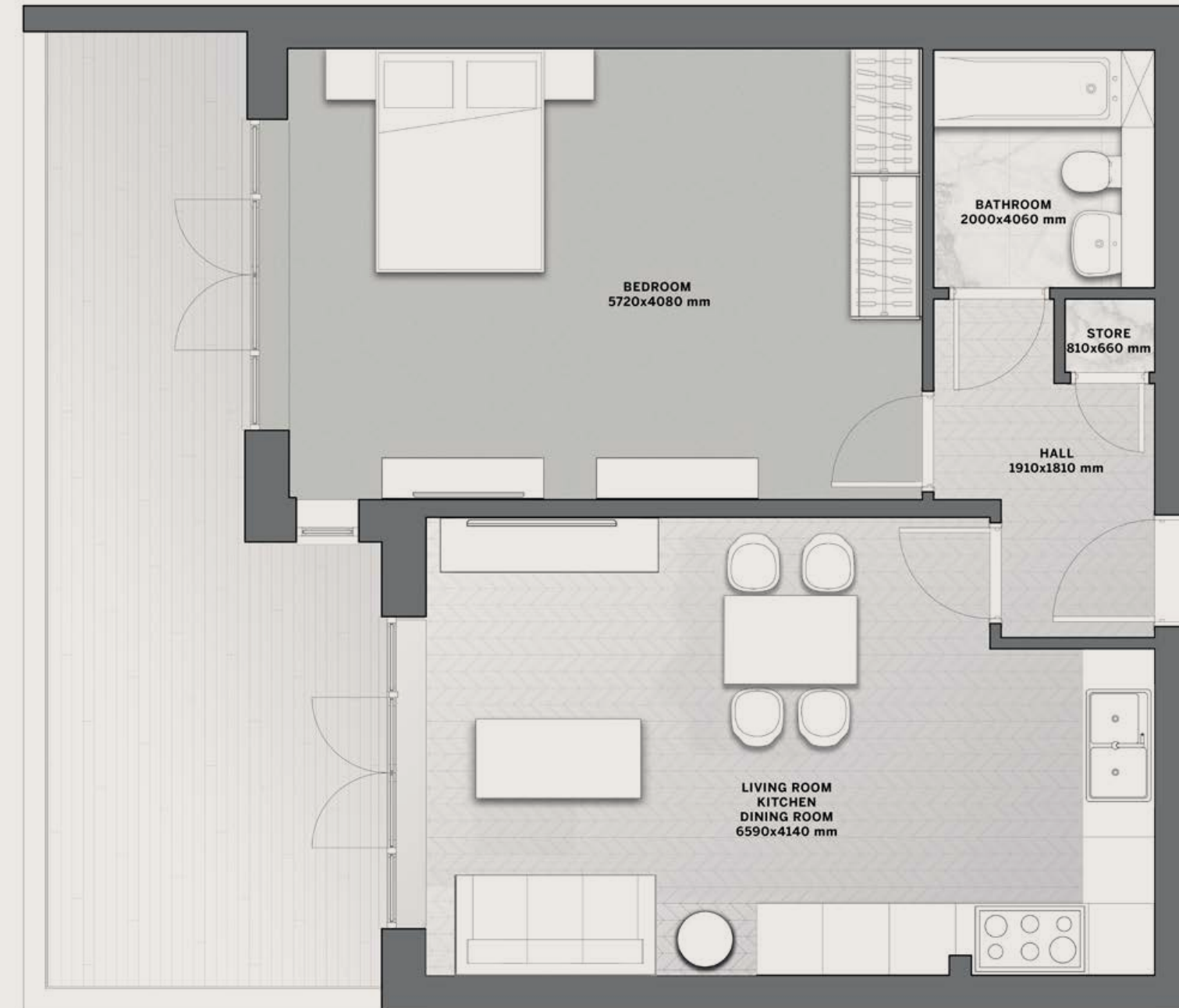
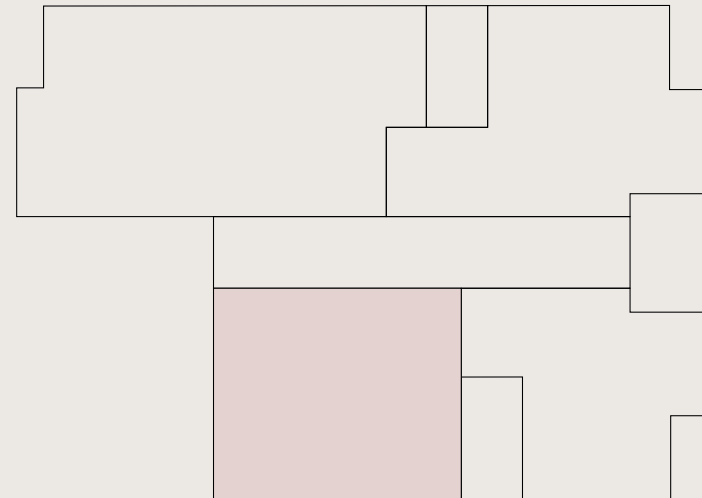
Disclaimer: All pictures, plans, layouts, information, data and details included in this brochure are indicative only and may change at any time up to the final 'as built' status in accordance with final designs of the project, regulatory approvals and planning permissions. All accessories and interior finishes such as wallpaper, chandeliers, furniture, electronics, white goods, curtains, hard and soft landscaping, pavements, features, gym, swimming pool(s) and other elements displayed in the brochure, or within the show apartment or between the plot boundary and the unit, are not part of the unit and are shown for illustrative purposes only.



BUILDING B  
**LOWER GROUND**

APT No. B.2  
**1-BEDROOM**

648 SQ FT / 60.2 SQ M  
EXCLUDING TERRACE



Disclaimer: All pictures, plans, layouts, information, data and details included in this brochure are indicative only and may change at any time up to the final 'as built' status in accordance with final designs of the project, regulatory approvals and planning permissions. All accessories and interior finishes such as wallpaper, chandeliers, furniture, electronics, white goods, curtains, hard and soft landscaping, pavements, features, gym, swimming pool(s) and other elements displayed in the brochure, or within the show apartment or between the plot boundary and the unit, are not part of the unit and are shown for illustrative purposes only.

---

BUILDING B  
**GROUND FLOOR**

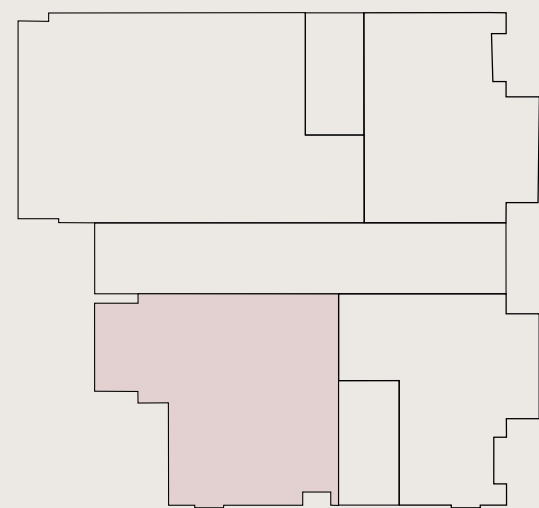
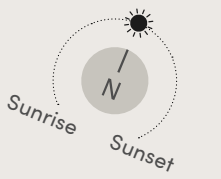
---

APT No. B.3  
**1-BEDROOM**

---

565 SQ FT / 52.5 SQ M  
EXCLUDING BALCONY

---



---

**Disclaimer:** All pictures, plans, layouts, information, data and details included in this brochure are indicative only and may change at any time up to the final 'as built' status in accordance with final designs of the project, regulatory approvals and planning permissions. All accessories and interior finishes such as wallpaper, chandeliers, furniture, electronics, white goods, curtains, hard and soft landscaping, pavements, features, gym, swimming pool(s) and other elements displayed in the brochure, or within the show apartment or between the plot boundary and the unit, are not part of the unit and are shown for illustrative purposes only.

---

BUILDING B  
**FIRST FLOOR**

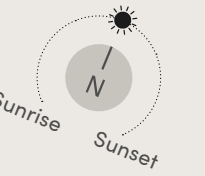
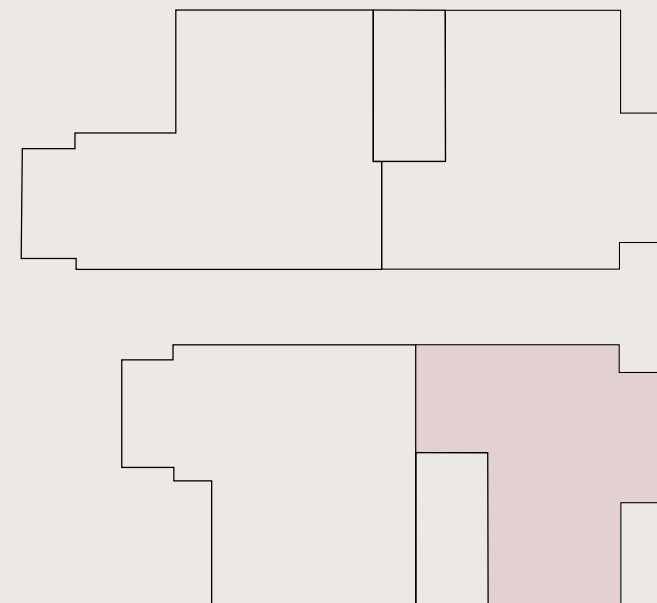
---

APT No. B.4  
**1-BEDROOM**

---

527 SQ FT / 49 SQ M

---



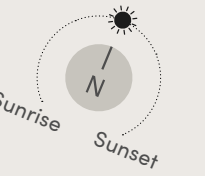
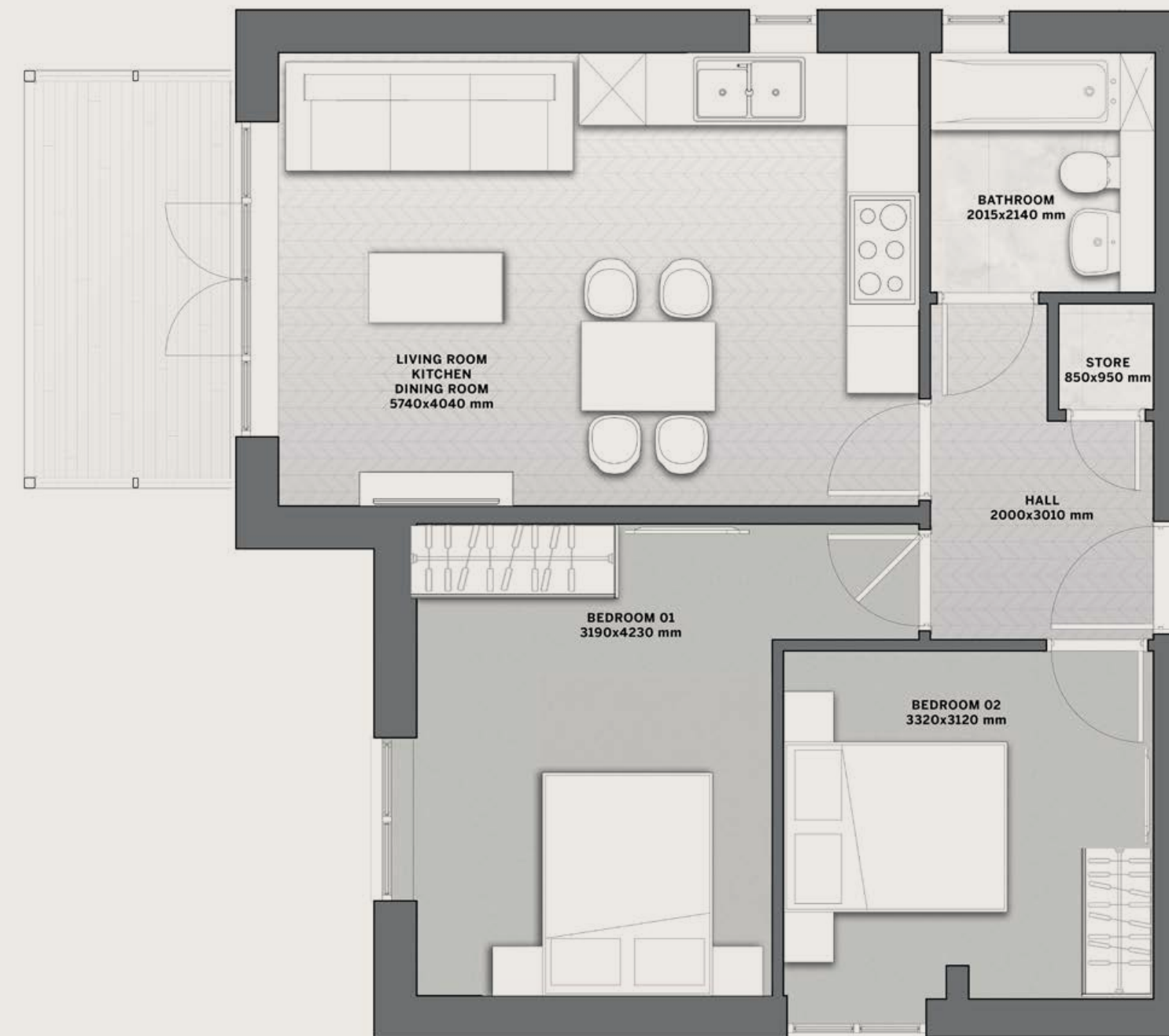
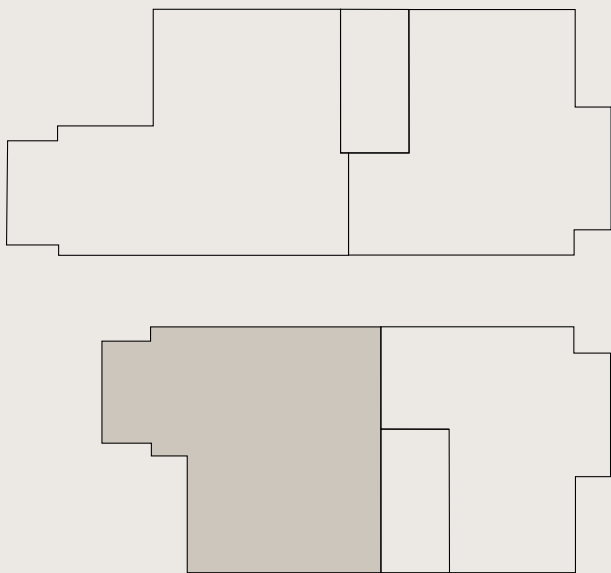
---

Disclaimer: All pictures, plans, layouts, information, data and details included in this brochure are indicative only and may change at any time up to the final 'as built' status in accordance with final designs of the project, regulatory approvals and planning permissions. All accessories and interior finishes such as wallpaper, chandeliers, furniture, electronics, white goods, curtains, hard and soft landscaping, pavements, features, gym, swimming pool(s) and other elements displayed in the brochure, or within the show apartment or between the plot boundary and the unit, are not part of the unit and are shown for illustrative purposes only.

BUILDING B  
**FIRST FLOOR**

APT No. B.5  
**2-BEDROOMS**

654 SQ FT / 60.8 SQ M  
EXCLUDING BALCONY



Disclaimer: All pictures, plans, layouts, information, data and details included in this brochure are indicative only and may change at any time up to the final 'as built' status in accordance with final designs of the project, regulatory approvals and planning permissions. All accessories and interior finishes such as wallpaper, chandeliers, furniture, electronics, white goods, curtains, hard and soft landscaping, pavements, features, gym, swimming pool(s) and other elements displayed in the brochure, or within the show apartment or between the plot boundary and the unit, are not part of the unit and are shown for illustrative purposes only.

---

BUILDING B  
**SECOND FLOOR**

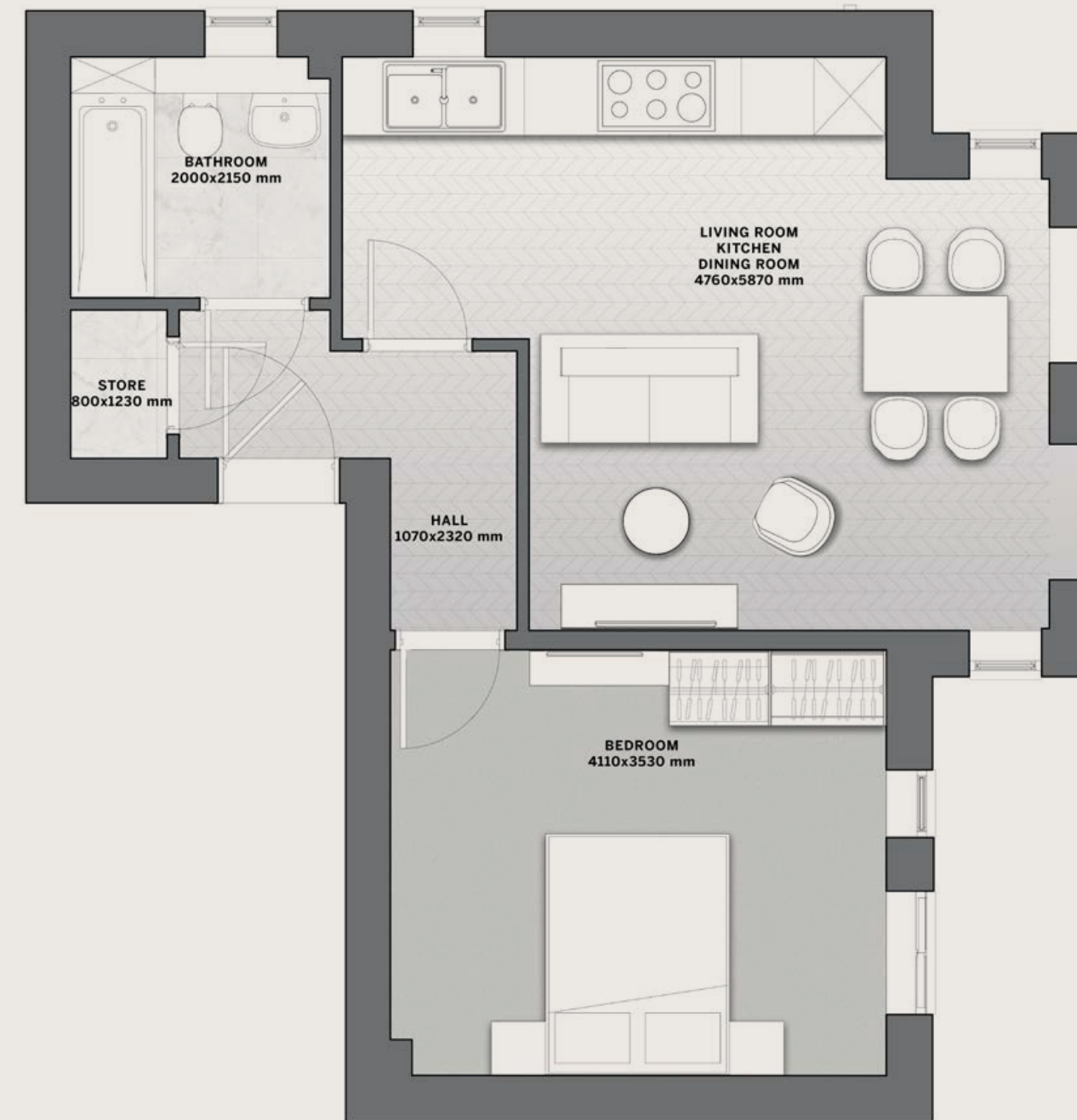
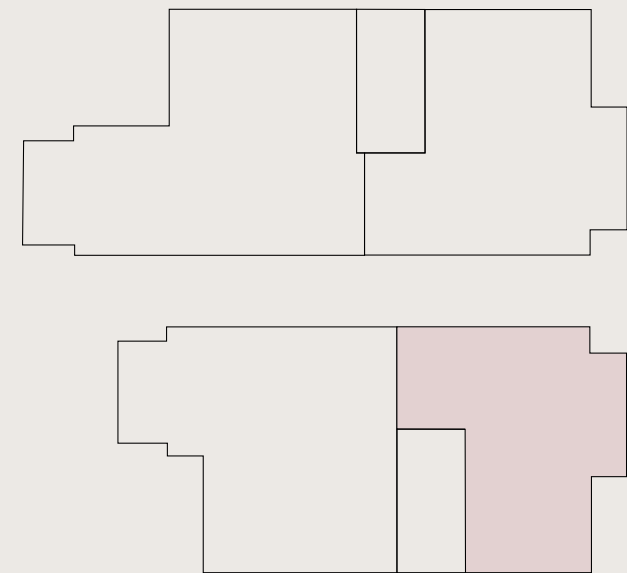
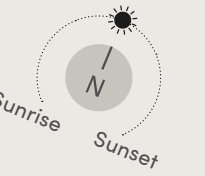
---

APT No. B.6  
**1-BEDROOM**

---

529 SQ FT / 49.1 SQ M

---



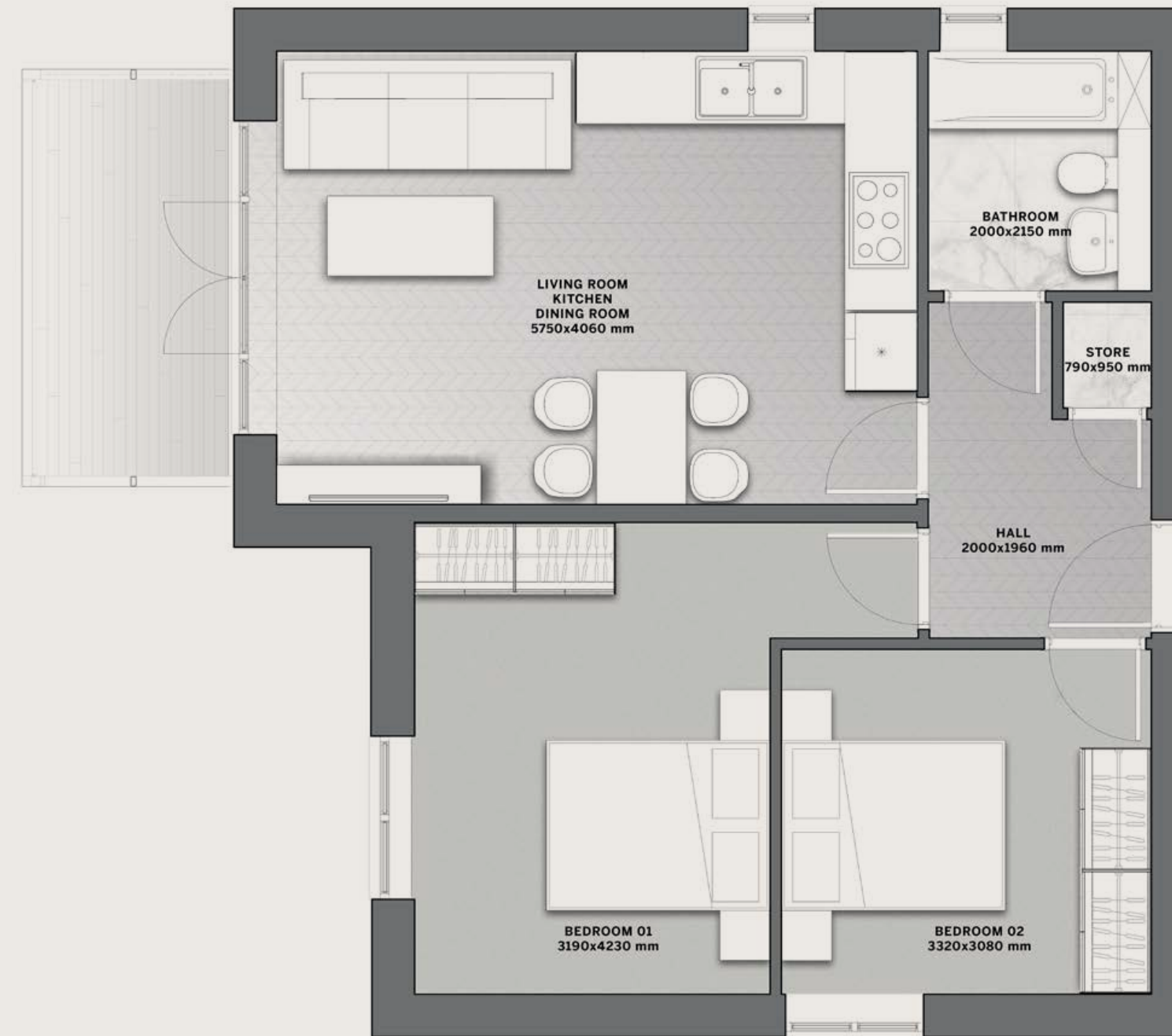
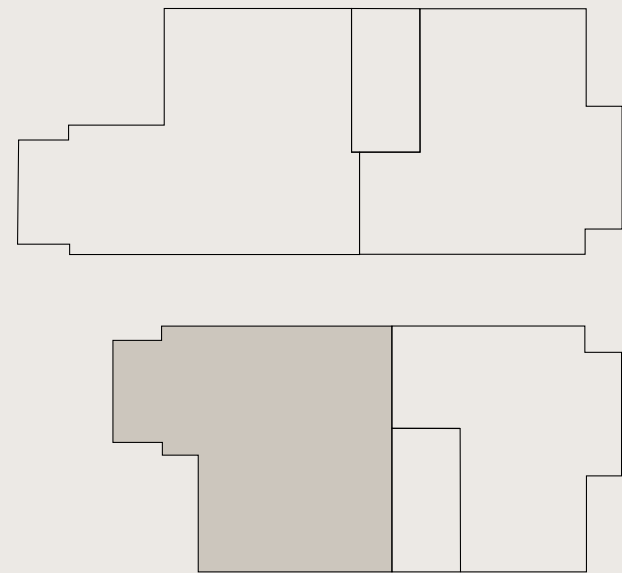
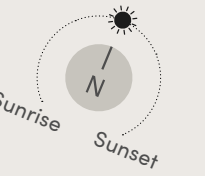
---

Disclaimer: All pictures, plans, layouts, information, data and details included in this brochure are indicative only and may change at any time up to the final 'as built' status in accordance with final designs of the project, regulatory approvals and planning permissions. All accessories and interior finishes such as wallpaper, chandeliers, furniture, electronics, white goods, curtains, hard and soft landscaping, pavements, features, gym, swimming pool(s) and other elements displayed in the brochure, or within the show apartment or between the plot boundary and the unit, are not part of the unit and are shown for illustrative purposes only.

BUILDING B  
**SECOND FLOOR**

APT No. B.7  
**2-BEDROOMS**

658 SQ FT / 61.1 SQ M  
EXCLUDING BALCONY

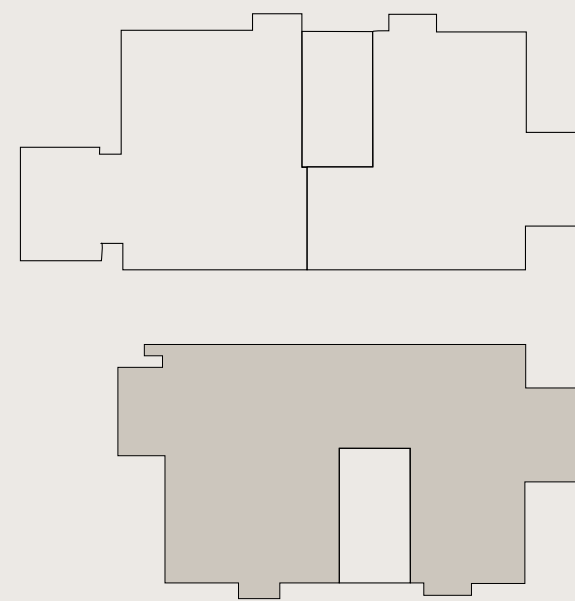
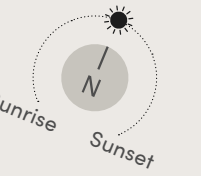


Disclaimer: All pictures, plans, layouts, information, data and details included in this brochure are indicative only and may change at any time up to the final 'as built' status in accordance with final designs of the project, regulatory approvals and planning permissions. All accessories and interior finishes such as wallpaper, chandeliers, furniture, electronics, white goods, curtains, hard and soft landscaping, pavements, features, gym, swimming pool(s) and other elements displayed in the brochure, or within the show apartment or between the plot boundary and the unit, are not part of the unit and are shown for illustrative purposes only.

BUILDING B  
**THIRD FLOOR**

APT No. B.8  
**2-BEDROOMS**

917 SQ FT / 85.2 SQ M  
EXCLUDING TERRACE



Disclaimer: All pictures, plans, layouts, information, data and details included in this brochure are indicative only and may change at any time up to the final 'as built' status in accordance with final designs of the project, regulatory approvals and planning permissions. All accessories and interior finishes such as wallpaper, chandeliers, furniture, electronics, white goods, curtains, hard and soft landscaping, pavements, features, gym, swimming pool(s) and other elements displayed in the brochure, or within the show apartment or between the plot boundary and the unit, are not part of the unit and are shown for illustrative purposes only.

A DEVELOPMENT BY

**DARGLOBAL**



MOUNTBATTEN  
HOMES



# DARGLOBAL

## LISTED ON THE LONDON STOCK EXCHANGE

Established in 2017 to upend the global luxury real estate market, DarGlobal combines experience and innovation to deliver the highest quality properties. World-class architects curate DarGlobal's homes that are modelled by renowned design icons; each DarGlobal home is built with the highest quality materials and maintained by experts within the field.

DarGlobal believes there is no better investment than an investment in luxury and takes pride in choosing the best-in-class locations and properties to provide lucrative investment opportunities for a distinct clientele.

### BUILDING ON THE LEGACY OF THE LARGEST REAL ESTATE COMPANY IN THE REGION.

—  
**7**  
offices in different  
cities worldwide

—  
**29**  
years of  
experience

—  
**15,000+**  
residential units  
delivered

—  
**8.6 Bn**  
USD in assets

—  
**500,000 sqm**  
of commercial space



OUR OFFICES

**DARGLOBAL**

---

**LONDON. UK**

50 Hans Crescent,  
Knightsbridge, London,  
SW1X 0NA, United Kingdom  
T +44 7875 495156

---

**DUBAI. UAE**

Jumeirah Emirates Towers  
30th Floor, Sheikh Zayed Road.  
PO Box 2523, Dubai,  
United Arab Emirates  
T +971 4 247 8999

---

**DOHA. Qatar**

Malibu Building,  
Lusail Entertainment City,  
Doha, Qatar  
T +974 800 3536

---

**MARBELLA. Spain**

Marbella Club Golden Mile,  
Av. Bulevar Príncipe Alfonso  
de Hohenlohe, Marbella 29602,  
Málaga, Spain  
T +34 952 68 76 80

---

**MUSCAT. Oman**

Royal Opera House Muscat  
Shatti Al Qurum, Muscat,  
Sultanate of Oman  
T +968 2270 2777

---

**BEIJING. China**

303-309, North Tower,  
Beijing Kerry Centre,  
No.1 Guanghua Road,  
Chaoyang District, Beijing  
T +86 132 5888 6222

---

For more information on  
Oh So Close, please call  
**+44 7875 495156 (UK)**

You can also check our website  
**[darglobal.co.uk/oh-so-close/](http://darglobal.co.uk/oh-so-close/)**  
or our social media platforms



# DARGLOBAL

[DARGLOBAL.CO.UK](http://DARGLOBAL.CO.UK)

The information in this document is indicative and is intended to act as a guide only as to the finished product. Accordingly, the finished product may vary from the information provided. These particulars should not be relied upon as statements of fact or representations and applicants must satisfy themselves by inspection or otherwise as to their correctness. This information does not constitute a contract or warranty. All computer generated images and lifestyle photography are indicative only.