



**Glazebrook Square
Leicester
LE3 9NY**

Offers In Excess Of £190,000

bettermove

Glazebrook Square Leicester

Bettermove are proud to present this 3 bedroom semi-detached house in Leicester, available with no forward chain.

The property is currently tenanted and it will be sold with tenants in situ for immediate investment. Rental yields can be obtained through Bettermove.

The property benefits from double glazing, gas central heating throughout and has off street parking available via the driveway.

The council tax band is A.

The interior of this beautifully presented property comprises a spacious living room, dining room, fitted kitchen with pantry, WC and conservatory on the ground floor. The first floor consists of 3 bedrooms and the family bathroom. The exterior boasts a private rear garden, perfect for enjoying the summer months.

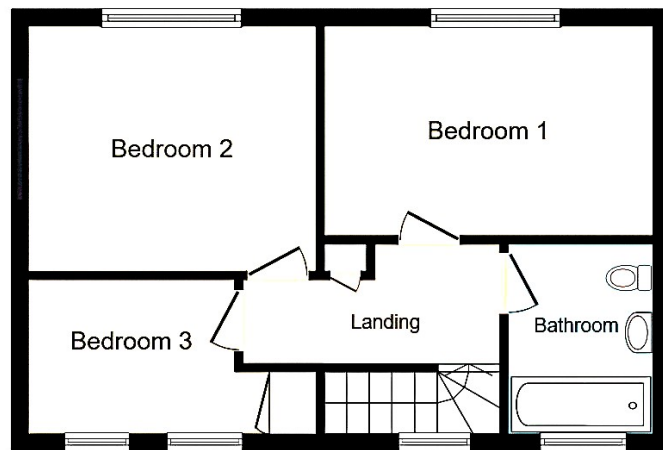
Located in the popular town of Leicester, the property is close to a range of amenities, including shops, supermarkets, restaurants and pubs. Excellent transport connections can be found from Leicester Railway Station, local bus routes and quick access to the M1.

This exciting opportunity should not be missed! All enquiries can be made through Bettermove on 0330 004 0050.



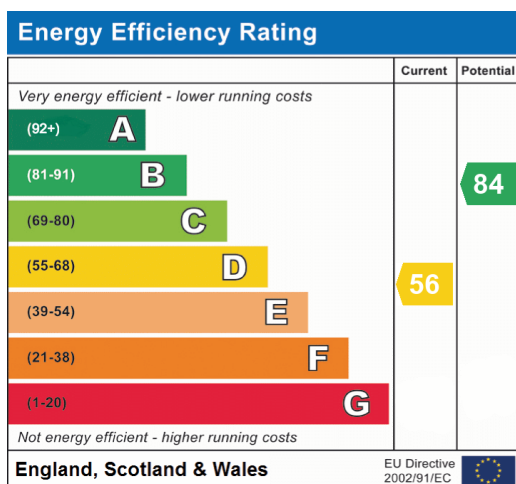


Ground Floor



First Floor

This floor plan is for illustrative purposes only. It is not drawn to scale. Any measurements, floor areas (including any total floor area), openings and orientation are approximate. No details are guaranteed, they cannot be relied upon for any purpose and they do not form part of any agreement. No liability is taken for any error, omission or misstatement. A party must rely upon its own inspection(s). Powered by www.focalagent.com





20-22 Bridge End, Leeds, LS1 4DJ
t: 0330 004 0050 e: hello@bettermove.co.uk
www.bettermove.co.uk