



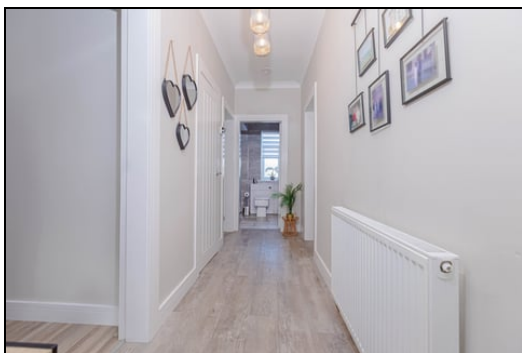
**Offers Over £84,500**  
**19 Dundonald Crescent, Cardenden, Lochgelly, Fife, KY5 0DH**

# 19 Dundonald Crescent, Cardenden, Lochgelly, Fife, KY5 0DH

Delmor are delighted to present to the market this beautifully presented ground floor flat set in a popular location. Cardenden is conveniently located for local amenities, including, shops and primary school, the property is also ideally placed for commuting with Cardenden served by a mainline train station providing routes on the Fife circular line as well as to Edinburgh and beyond. The property briefly comprises of - Entrance hallway with storage cupboard. Bright lounge with French doors. Modern luxury kitchen with floor and wall mounted units incorporating electric hob with oven below and overhead extractor fan. Integrated fridge/freezer. Luxury modern shower room comprising of walk in double shower cubicle, vanity unit housing the wash hand basin and WC. There are two double bedrooms. The sellers have created a parking space with room for two vehicles (but there is no dropped kerb). The rear gardens are of a good size and are enclosed. Decked area. The property also benefits from gas central heating and double glazing. Early viewing is a MUST on this highly desirable property which is in truly move in condition and is a credit to the current owner.

## Ground Floor

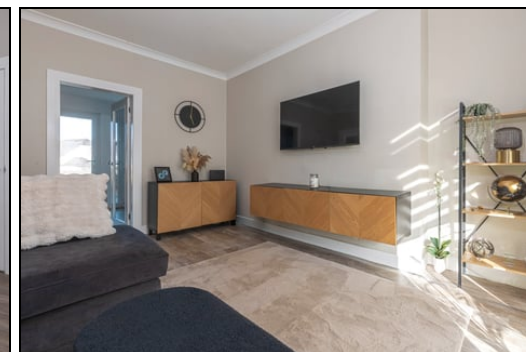
### Entrance Hallway



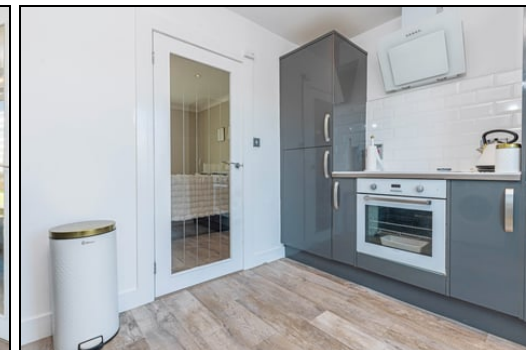
### Lounge



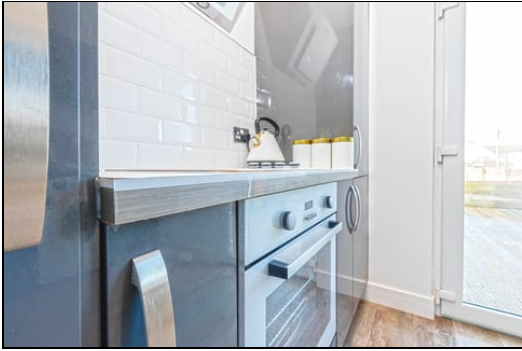
4.29m x 3.81m (14' 1" x 12' 6")



### Kitchen



3.25m x 2.34m (10' 8" x 7' 8")



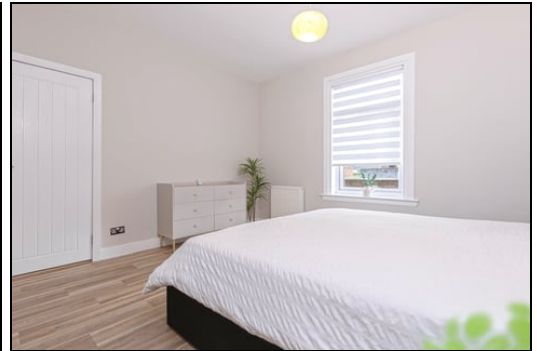
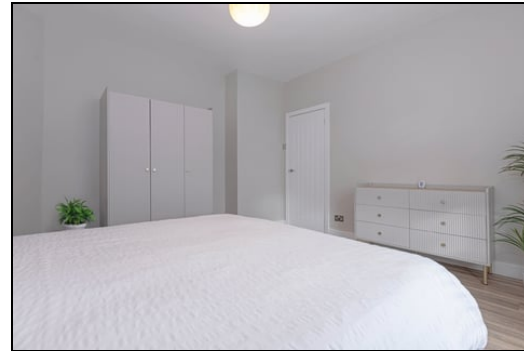
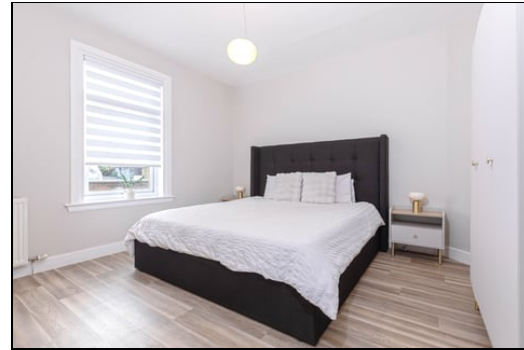
### Shower Room



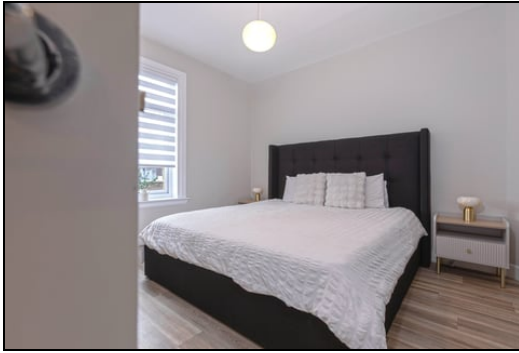
2.99m x 2.04m (9' 10" x 6' 8")



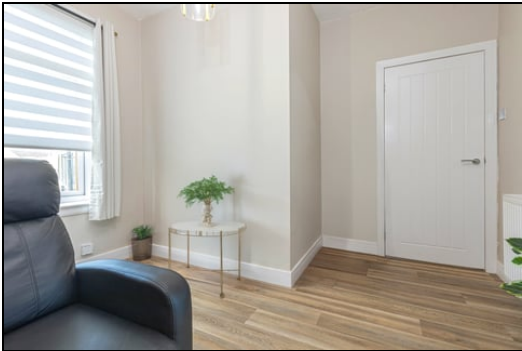
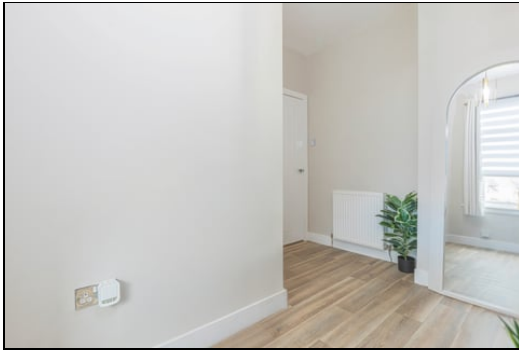
### Bedroom



3.9m x 3.87m (12' 10" x 12' 8")



Bedroom



3.9m x 3.2m (12' 10" x 10' 6")

### Gardens



### Extras

All floor coverings. Electric hob, oven and extractor fan. Integrated fridge/freezer.



measurements have been taken using a sonic tape measure and therefore, may be subject to a small margin of error.

## MEASUREMENTS

All measurements are approximate.

## APPLIANCES/SERVICES

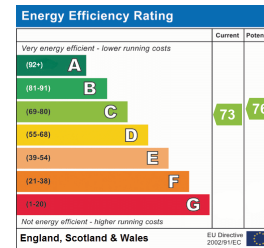
The mention of any appliances and/or services within these Sales Particulars does not imply they are in fully working order.

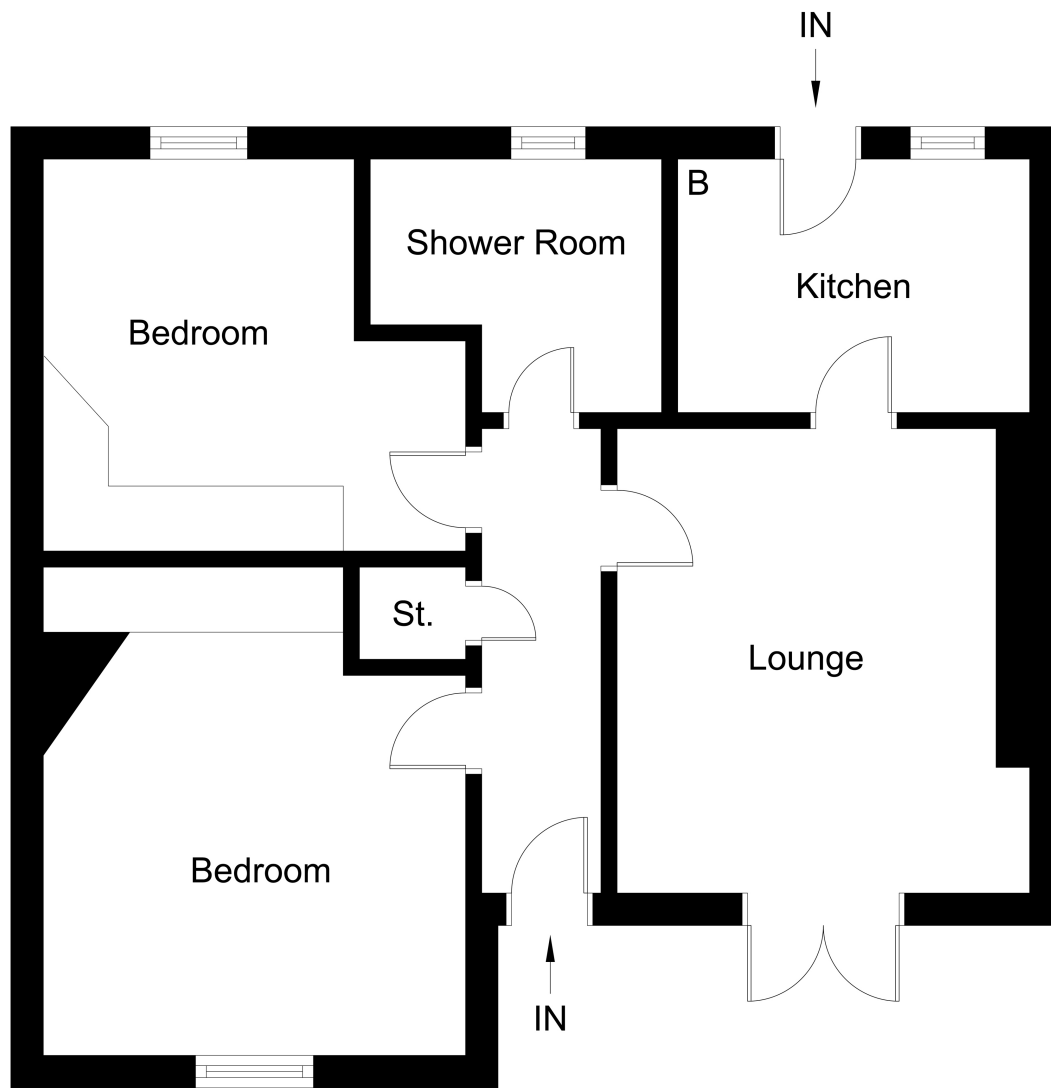
## MORTGAGE & FINANCIAL ADVICE

Qualified Mortgage and Financial Consultants can provide you with up to the minute information on many of the rates available. To arrange an appointment telephone this office. **YOUR HOME IS AT RISK IF YOU DO NOT KEEP UP REPAYMENTS ON A MORTGAGE OR OTHER LOANS SECURED ON IT.** Full written quotation available on request. A suitable life policy may be required. Loans are subject to status. Minimum age 18.

## FREE VALUATION

How much is your property worth?. We can provide you with the answer. We offer a free valuation service without cost or obligation. Please call this office for an appointment.





Ground Floor Flat