



GREGORY BROWN
RESIDENTIAL SALES & LETTINGS

£950,000 Freehold
FOR SALE



St Pinnock Avenue, Staines-upon-Thames, Surrey, TW18 2HX

OFFERING GREAT SCOPE FOR EXTENSION (S.T.R.P.P), THIS HUGELY SPACIOUS DETACHED BUNGALOW IS LOCATED AT THE END OF A MUCH SOUGHT AFTER PRIVATE ROAD ON AN EXTENSIVE SECLUDED PLOT WITHIN MOMENTS OF THE RIVER THAMES. The property currently offers a wealth of accommodation and benefits from a spacious lounge/diner, kitchen, five well-proportioned bedrooms, two bath/shower rooms, extensive secluded gardens, detached garage and off-street parking. Viewings Highly Recommended!

Gregory Brown

127a, High Street, Staines-upon-Thames, TW18 4PD

01784 451458

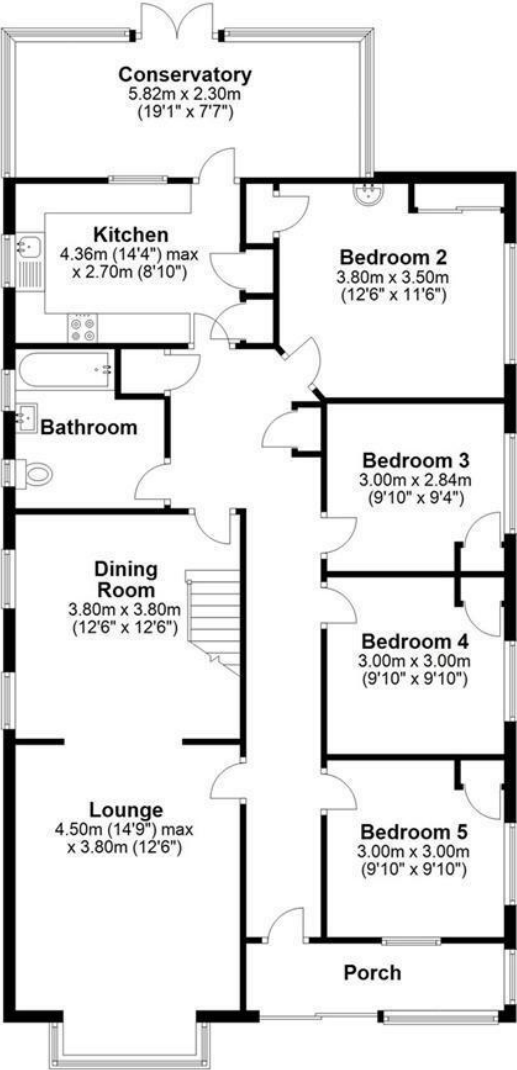
staines@gregory-brown.co.uk

ROOM DESCRIPTIONS

FLOORPLAN

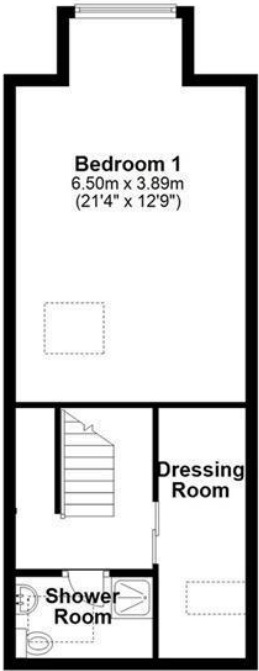
Ground Floor

Approx. 130.5 sq. metres (1404.7 sq. feet)



First Floor

Approx. 39.9 sq. metres (429.1 sq. feet)



Total area: approx. 170.4 sq. metres (1833.8 sq. feet)