



Weighton Road, Harrow, HA3 6HY

**Cow & Co**  
LONDON



Guide Price: £600,000 - £750,000. Built circa 1929 and then further extended this 5 bedroom semi detached family home is ideally located within easy reach of facilities in Harrow Weald. The property is offered for sale in very good order throughout and features to note include gas fired central heating, double glazed windows and spacious accommodation including a ground floor shower room, two reception rooms and a spacious kitchen/diner measuring some 22' x 14'. There is also a separate utility room off the kitchen.

The property has a double storey side extension and as such offers five bedrooms to the first floor and a modern family bathroom/wc. Off street parking is provided to the front for 2-3 vehicles and the rear garden extends to around 60ft and backs onto parkland.

Viewing is highly recommended.



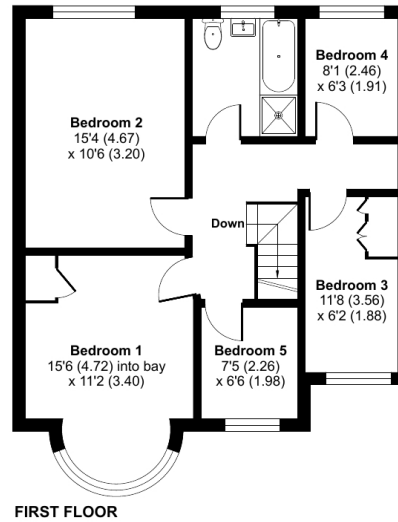
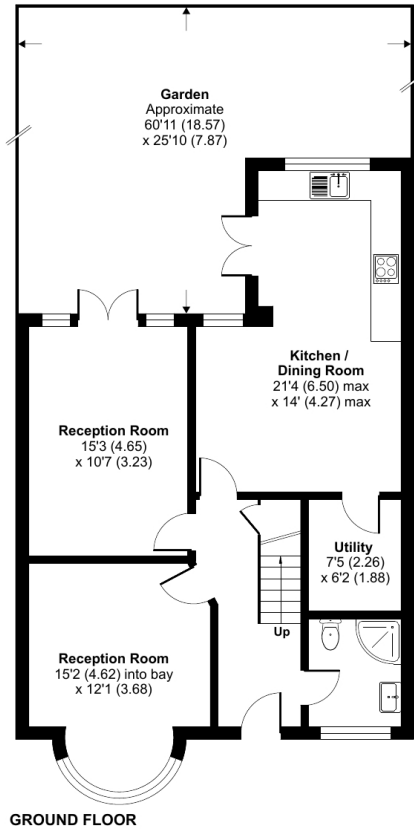
- 5 bedroom extended semi detached family home
- Two reception rooms
- Extended fitted kitchen/diner
- Utility room/pantry
- Downstairs shower room/wc
- Approx 60ft garden backing onto parkland
- Close proximity to local transport links and amenities
- Chain free sale immediate vacant possession available



## Weighton Road, Harrow, HA3

Approximate Area = 1445 sq ft / 134.2 sq m

For identification only - Not to scale



Floor plan produced in accordance with RICS Property Measurement Standards incorporating International Property Measurement Standards (IPMS2 Residential). © nchecon 2023. Produced for Cow & Co Properties Ltd. REF: 1051251

Tel: 0208 065 0010  
Email: [thehub@cowandco-london.com](mailto:thehub@cowandco-london.com)  
Web: [cowandco-london.com](http://cowandco-london.com)

Agents note: All measurements are approximate and whilst every attempt has been made to ensure accuracy they are for general guidance only and must not be relied on. The fixture and fittings referred to have not been tested and therefore no guarantee can be given that they are in working order. Internal photographs are reproduced for general information and it must not be inferred that any item shown is included with the property.

**Cow & Co**  
LONDON