



One Bedroom Flat  
Bower Lane, Maidstone, Kent, ME16 8EJ

£995 pcm  
Leasehold



## Bower Lane, Maidstone, Kent, ME16 8EJ

£995 pcm

Leasehold

### Description

Discover this well-presented, top-floor one-bedroom flat offering a light-filled, modern living space in a prime Maidstone location. Perfectly positioned just a 10-minute walk from both the station and the high street, you'll have shops, cafes, and transport links right on your doorstep. Inside, the property features a welcoming porch, spacious landing, a double bedroom, modern bathroom, and a stylish open-plan kitchen/living area – ideal for relaxing or entertaining. Offered unfurnished and in great condition throughout, it's ready for you to move straight in. Appliances (washing machine and fridge) included as a gift. Permit parking nearby. Don't miss out – this is a fantastic opportunity to enjoy comfortable, convenient living in the heart of Maidstone!

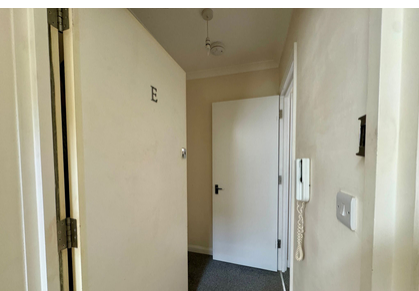
### Key Features

- Available Now
- One-bedroom spacious flat
- Open-plan kitchen & living area
- Neutral décor throughout
- Includes washing machine and fridge (gifted)
- Unfurnished – ready for you to personalise
- Permit parking available nearby
- 10-minute walk to Maidstone station and high street
- Ideal for professionals, couples, or first-time renters

### Local Area

Maidstone, the county town of Kent, is a vibrant market town nestled along the River Medway. Surrounded by beautiful countryside, it offers a mix of history, culture, and modern amenities. Highlights include Leeds Castle, the Maidstone Museum, and a range of parks and green spaces. The town boasts excellent transport links to London, making it popular with commuters, while also offering great schools, shopping, and leisure facilities for families. Known as part of the "Garden of England," Maidstone balances rural charm with urban convenience, making it an attractive place to live, work, and explore in the heart of Kent.

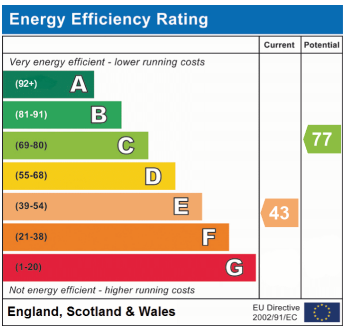
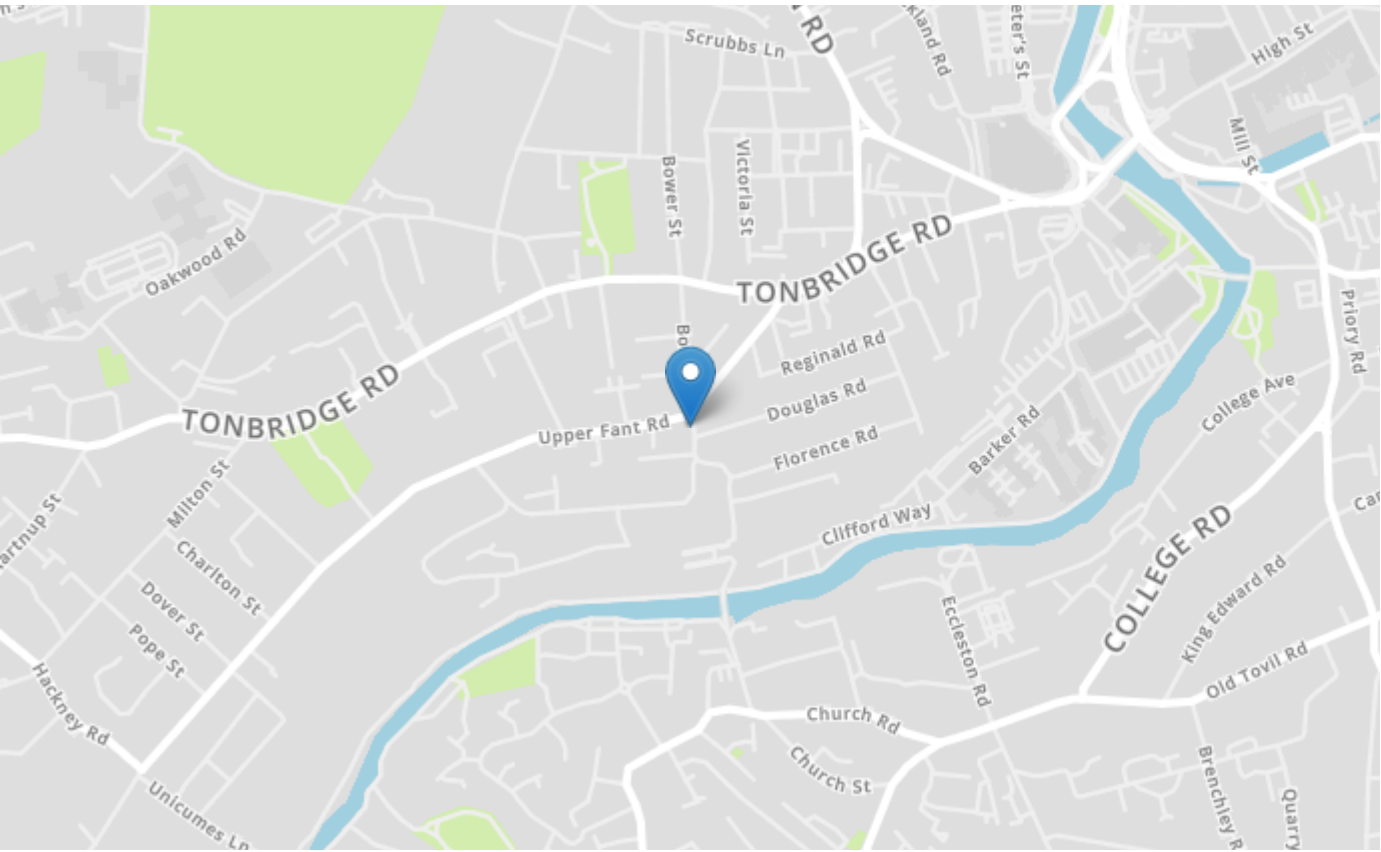






Property Location

Bower Lane, Maidstone, Kent, ME16 8EJ



Tenure	Leasehold
Lease Term	Change this text
Ground Rent	Change this text
Service Charge	Change this text
Local Authority	Maidstone Council
Council Tax	Band A

haus Estate Agents  
26, London Road  
Gillingham  
Kent  
ME8 6YX  
Tel: 01634 848883 Email:  
hello@haustateagents.co.uk

**Agent Notes**  
These particulars do not form part of an offer or contract and must not be relied upon as statements or representation of fact.  
The seller does not make or give nor do our employees or haus Estate Agents have authority to make or give any representation or warranty to the property. It should not be assumed that the property has all necessary planning, building regulation or other consents and we have not tested any services, equipment, or facilities. All photographs, measurements, floorplans and distances referred to are given as a guide only and should not be relied upon for the purchase of carpets or any other fixtures or fittings. References to tenure, service charges and ground rent (where applicable) as well as council tax are based on information supplied by the seller.  
The Buyer should verify all information themselves by inspection or otherwise prior to a legal commitment to purchase. The copyright of all details, photographs and floorplans remains exclusive to haus Estate Agents. If you require clarification or further information on any points, please contact us, especially if you are travelling some distance to view.