

hastings
INTERNATIONAL



Elizabeth Square

£850,000

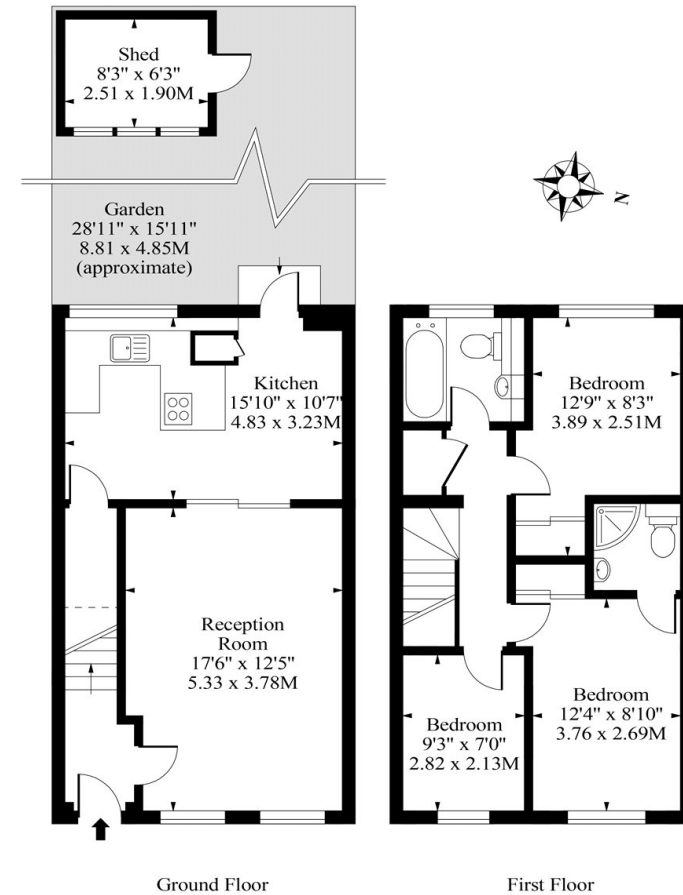
30 Elizabeth Square, London SE16 5XN

An exceptional freehold house presented in immaculate condition providing generous accommodation which includes reception room, eat-in kitchen/dining room, three bedrooms, two bathrooms, garden and allocated parking. Set within a sought after riverside development moments from the Thames Path, Stave Hill Ecological Park and Surrey Quays Shopping Centre. The nearest station is Canada Water [Jubilee and Overground] with regular riverboat services to Canary Wharf via nearby Doubletree Docklands Nelson Dock Pier.

Arranged over two floors, this impeccable freehold house comprises entrance hall, impressive reception room with natural oiled oak flooring, double doors lead to eat-in fitted kitchen with Askilan work tops and appliances, dining area, under stairs storage, door leads to private rear garden with shed and bike shed, first floor comprises landing with airing cupboard and access to loft area providing generous storage, master bedroom with fitted wardrobes and en-suite shower room, two further bedrooms and family bathroom. The property is immaculately presented and occupies a quiet corner position within a sought after riverside development.

- Elizabeth Square SE16
- Freehold House
- Two Bathrooms
- Eat-In Kitchen
- Riverside Development
- 910 Sq Ft
- Three Bedrooms
- Impressive Reception Room
- Exceptional Condition
- Parking And Garden

Elizabeth Square SE16



Approx Gross Internal Area 910 Sq Ft - 84.54 Sq M

Measured in accordance with RICS guidelines. Every attempt is made to ensure accuracy
However all measurements are approximate.
The floor plan is illustrative purposes only and is not to scale



