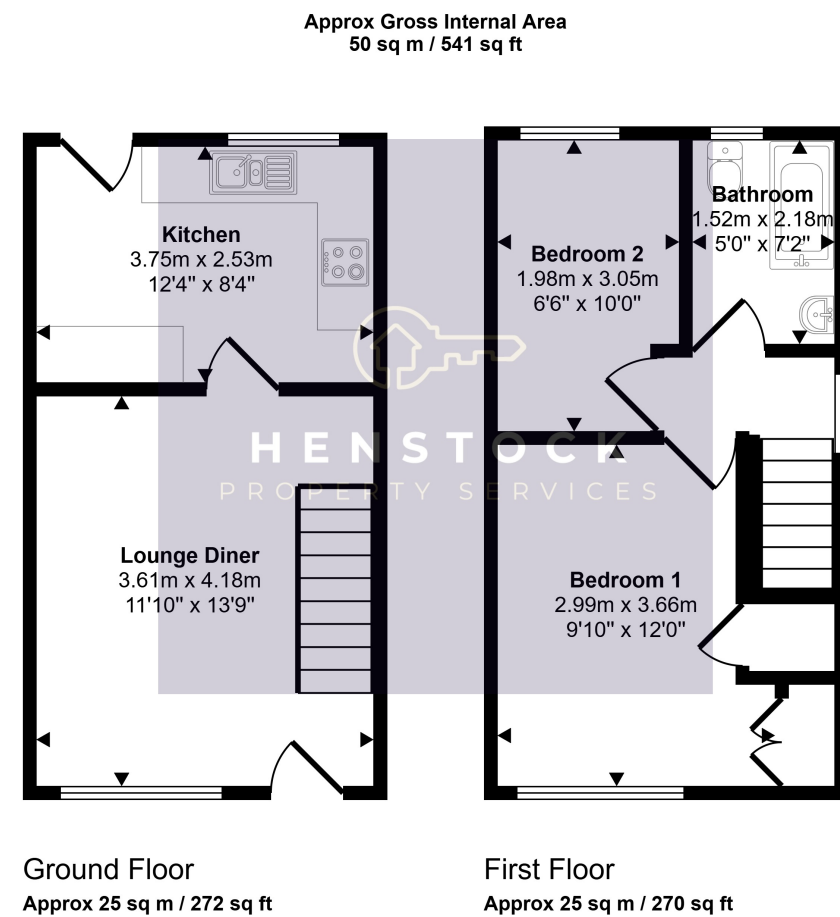
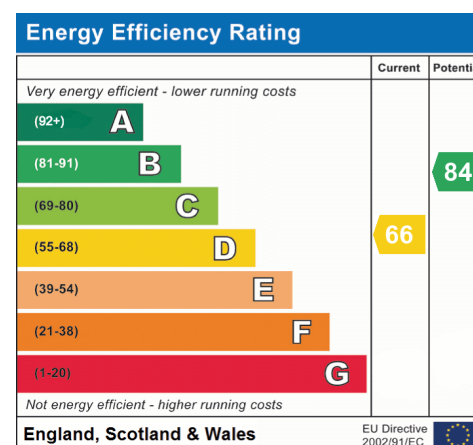




HENSTOCK
PROPERTY SERVICES



This floorplan is only for illustrative purposes and is not to scale. Measurements of rooms, doors, windows, and any items are approximate and no responsibility is taken for any error, omission or mis-statement. Icons of items such as bathroom suites are representations only and may not look like the real items. Made with Made Snappy 360.



8 Lynway Grove, Middleton, Manchester, Lancashire M24 2SR

- 2 BEDROOMED SEMI-DETACHED
- GAS CENTRAL HEATING
- DOUBLE GLAZING
- COUNCIL TAX BAND A
- WELL PRESENTED THROUGHOUT
- REAR GARDEN
- EPC RATING D
- FREEHOLD

£195,000



Ground Floor

Front Lounge

3.61m x 4.18m (11' 10" x 13' 9")

Kitchen

3.75m x 2.53m (12' 4" x 8' 4")

First Floor

Bedroom 1

2.99m x 3.66m (9' 10" x 12' 0")

Bedroom 2

1.98m x 3.05m (6' 6" x 10' 0")

Bathroom

1.52m x 2.18m (5' 0" x 7' 2")

Exterior

Parking to front

Garden to rear

PROPERTY DESCRIPTION

Henstock Property Services are pleased to market this well presented and modern 2 bedroomed semi-detached home. The living accommodation briefly comprises; front lounge, modern fitted kitchen, 2 bedrooms and a bathroom. The property also has the benefit of gas central heating, double glazed windows, off road parking to the side and a pleasant lawned garden to rear. Ideally situated in this popular residential area within easy reach of schools, shops/supermarkets, leisure/fitness facilities, good public transport services and minutes from the M60/M62 motorway links.

