



ROBIN JONES
ESTATE AGENTS



24 Mellowdew Road, Coventry, West Midlands. CV2 5GL

Offering high quality rental accommodation in a sought after location, this three bedroomed terraced house has undergone comprehensive modernisation. The accommodation comprises of entrance hall, living room, dining room, enlarged and fitted kitchen, three good bedrooms and first floor bathroom with suite and shower. Outside there are private gardens to the rear with vehicular access to a large garage/workshop. This sought after location allows excellent access to local shopping, highly regarded schools, numerous local pubs and eateries and is also close to University Hospital and the motorway network. The property is available now.



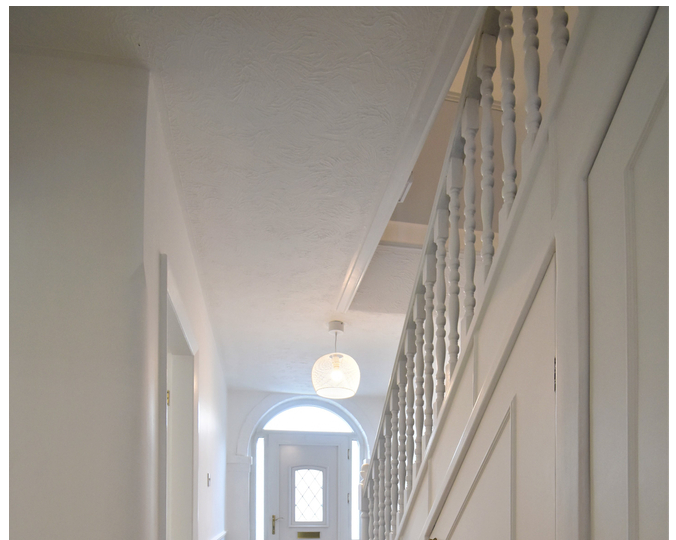
£875 pcm

PROPERTY DESCRIPTION

Offering high quality rental accommodation in a sought after location, this three bedroomed terraced house has undergone comprehensive modernisation. The accommodation comprises of entrance hall, living room, dining room, enlarged and fitted kitchen, three good bedrooms and first floor bathroom with suite and shower. Outside there are private gardens to the rear with vehicular access to a large garage/workshop. This sought after location allows excellent access to local shopping, highly regarded schools, numerous local pubs and eateries and is also close to University Hospital and the motorway network. The property is available now.

FEATURES

- Modernised and renovated terraced house
- Three good bedrooms and spacious bathroom
- Refitted kitchen with utility area
- Two good sized reception rooms
- Large garage/workshop
- Close to excellent local amenities, University Hospital and motorway network
- Energy Rating - D



ROOM DESCRIPTIONS

Large Entrance Hall

Accessed via a double glazed door and having stairway to first floor.

Living Room

4.01m x 3.78m (13' 2" x 12' 5")

Dining Room

3.43m x 3.25m (11' 3" x 10' 8")

Enlarged and Refitted Kitchen

5.26m max x 2.28m (17' 3" max x 7' 6")

Stairway

Leads to first floor.

Bedroom One

3.46m x 3.45m (11' 4" x 11' 4")

Bedroom Two

3.46m x 3.43m (11' 4" x 11' 3")

Bedroom Three

2.44m x 2.28m (8' 0" x 7' 6")

Bathroom

Having a corner suite and shower.

Outside to the Rear

There is a good sized mature well planted garden with private aspect and vehicular access to:

Large Detached Garage/Workshop

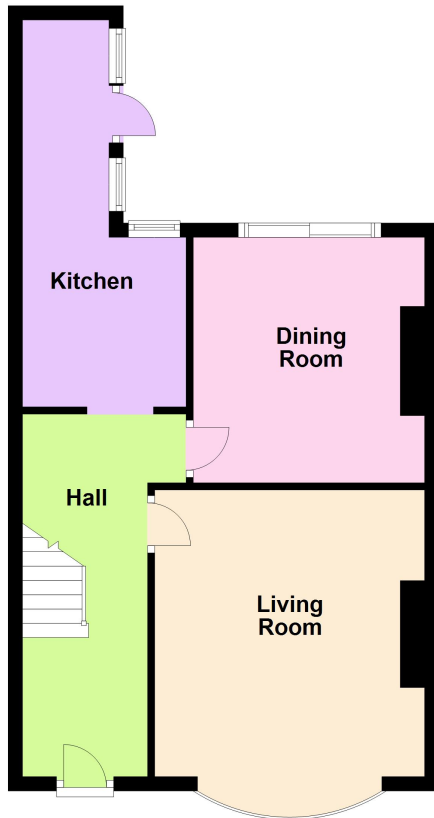
5.60m x 5.24m (18' 4" x 17' 2")

To the Front

There is a walled garden.

FLOORPLAN

Ground Floor



First Floor

