



16 Park Close, Glen Vine, Isle of Man. IM4 4HB

Extremely well maintained 3/4 bedroom detached family home in sought after location offered with no onward chain



£599,000 Freehold

PROPERTY DESCRIPTION

Welcome to 16 Park Close, Glen Vine. An immaculately presented detached family home offered with no onward chain.

Approaching the property, the first thing you notice is the beautifully maintained gardens featuring an array of colourful peonies dotted along the boundaries welcoming you onto the driveway. As you step into the property you are greeted by a spacious entrance hallway with storage under the stairs. Also on the ground floor is a spacious lounge with double doors leading into the Kitchen/Diner which was updated around 8 years ago and features an array of integral appliances plus access to the rear garden. There is also a utility room with charming stable door to rear. Completing the ground floor is a spacious additional reception room or bedroom 4 with open aspect to front.

On the first floor you will find a spacious master bedroom with fitted wardrobes and a generously sized en-suite shower room providing practicality and privacy. There are a further two bedrooms with fitted wardrobes and a stylish family bathroom with chrome heated towel rail.

The front and rear gardens are immaculate and offer a private setting for entertaining and relaxation, the rear garden enjoys day long sunshine and features established hedging and flowering plants.

FEATURES

- Detached Family Home
- Sought After Cul de Sac Location
- Superb Rural Views
- Large Lounge plus Modern Kitchen/Diner
- Utility Room
- 3/4 Bedrooms (1 En Suite) plus Family Bathroom
- Immaculate Front and Rear Gardens
- Off Road Parking
- No Onward Chain

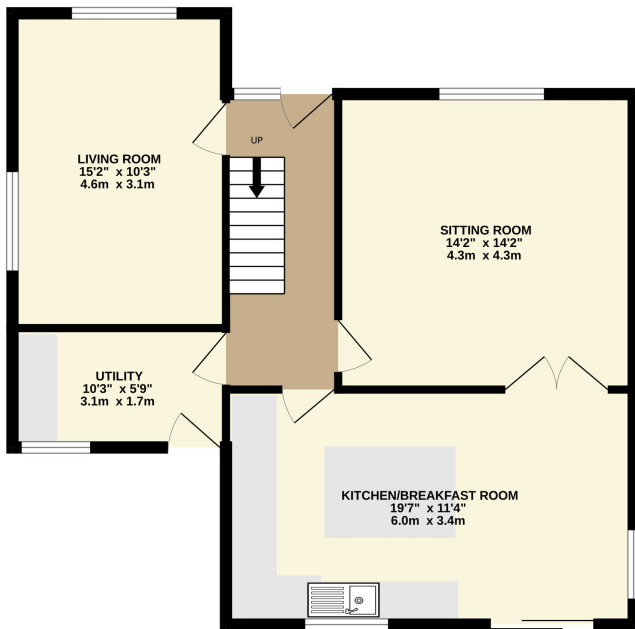


Property Images

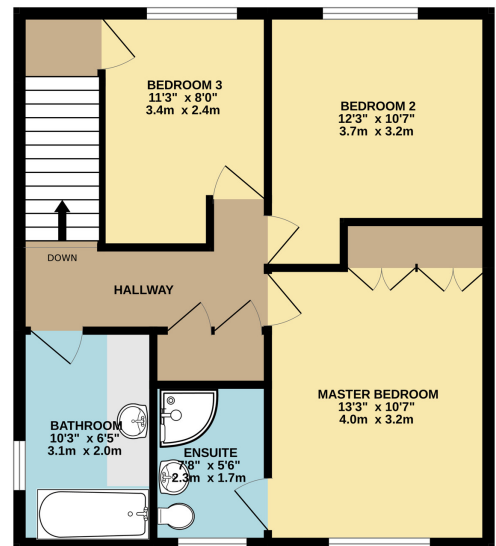


FLOORPLAN

GROUND FLOOR
714 sq.ft. (66.3 sq.m.) approx.



1ST FLOOR
575 sq.ft. (53.4 sq.m.) approx.



DETACHED 3 BEDROOM HOUSE

TOTAL FLOOR AREA : 1289 sq.ft. (119.7 sq.m.) approx.

Whilst every attempt has been made to ensure the accuracy of the floorplan contained here, measurements of doors, windows, rooms and any other items are approximate and no responsibility is taken for any error, omission or mis-statement. This plan is for illustrative purposes only and should be used as such by any prospective purchaser. The services, systems and appliances shown have not been tested and no guarantee as to their operability or efficiency can be given.
Made with Metropix ©2025



DISCLAIMER: Whilst Manxmove Ltd believe that these details are correct, neither Manxmove Ltd or their clients guarantee their accuracy in any way. Consequently, these details are not to be used to form part of any legally binding contract. Prospective purchasers or tenants are advised to visit this property to satisfy themselves as to the correctness of these details. Please note, we use wide angle camera lenses in order to show as much of each room as possible. This is not intended to mislead any prospective purchasers or tenants in any way and an honest verbal description is always available prior to viewing if required.