

**Guide Price**  
**£58,000**  
**Leasehold**

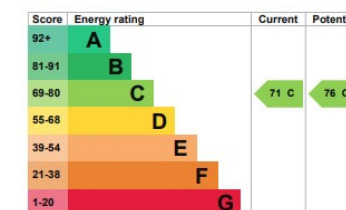
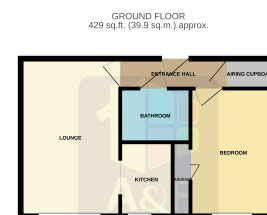


## Homelane House, 8 Rectory Road, Burnham-on-Sea, TA8 2BX

### 1 Bedrooms, Flat

- Purpose built retirement flat
- House manager & communal areas
- One bedroom, Lounge & Kitchen
- 24hr call system

- Communal gardens
- Communal parking
- No onward chain



**Council Tax**  
**Band: A**  
**£1,500.31**  
**for 2024/25**

**Material Information**

**Utilities Services:**  
Mains Water, Electricity & Drainage are Connected

**Flood Risk:**  
<https://flood-map-for-planning.service.gov.uk/>

**Broadband & Mobile Signal:**  
For an indication of specific speeds and supply or coverage in the area, we recommend potential Buyers use:  
<https://checker.ofcom.org.uk/en-gb/mobile-coverage>  
<https://checker.ofcom.org.uk/en-gb/broadband-coverage>

**Planning Applications:**  
[https://sdc.somerset.gov.uk/planning\\_online](https://sdc.somerset.gov.uk/planning_online)

Em: residential@aandfproperty.co.uk

Office: 18 College Street, Burnham-on-Sea, TA8 1AE

Tel: 01278 782266