



£350,000

Katron, Long Hedges, Fishtoft, Boston, Lincolnshire PE22 0RH

SHARMAN BURGESS

**Katron, Long Hedges, Fishtoft, Boston,
Lincolnshire PE22 0RH
£350,000 Freehold**

ACCOMMODATION

ENTRANCE HALL

Having partially obscure glazed front entrance door, staircase rising to first floor, under stairs storage cupboard, window to side elevation, ceiling light point, radiator.

LOUNGE

13' 6" (maximum into bay window) x 12' 7" (4.11m x 3.84m)
Having feature bay window to front elevation, additional window to side elevation, ceiling light point, radiator, TV aerial point, wiring for satellite TV, fireplace with tiled hearth and surround and space for electric fire.

A detached house with fantastic attached annexe situated on a plot of approximately 0.2 Acres (s.t.s) with no neighbours to either side of the property. Accommodation for the main house comprises an entrance hall, lounge, sitting/dining room with log burner, conservatory, kitchen, ground floor shower room, side entrance conservatory, inner hall, three bedrooms to the first floor and a family bathroom. The Annexe benefits from its own entrance hall, lounge diner, kitchen, large double bedroom and bathroom. Further benefits include front and rear gardens, driveway, oil central heating and uPVC double glazing. The property enjoys a rural location but is just a five minute drive from Boston Town Centre and the Pilgrim Hospital.



SHARMAN BURGESS

KITCHEN

14' 5" (maximum) x 8' 5" (maximum) (4.39m x 2.57m)
Having counter tops, one and half bowl sink and drainer with mixer tap, base level storage units, drawer units, wall units, space for electric Range cooker, plumbing for automatic washing machine, space for standard height fridge or freezer, dual aspect windows, ceiling light point.

SITTING/DINING ROOM

11' 4" (maximum) x 12' 6" (maximum) (3.45m x 3.81m)
Having window to side elevation, radiator, ceiling light point, fitted multi fuel burner with tiled hearth and surround. French doors through to: -

CONSERVATORY

20' 6" x 7' 9" (6.25m x 2.36m)
Of brick and uPVC double glazed construction with polycarbonate roof. Served by lighting and having French doors leading to the garden.

SIDE ENTRANCE CONSERVATORY

7' 2" x 7' 0" (2.18m x 2.13m)
Of brick and uPVC double glazed construction with polycarbonate roof. An area in which the current Vendors house a twin height fridge freezer.

INNER LOBBY

With additional door through to conservatory, radiator, ceiling light point, door through to Annexe.



**SHARMAN
BURGESS** Est 1996

GROUND FLOOR SHOWER ROOM

Being fitted with a three piece suite comprising shower cubicle with wall mounted electric shower within, pedestal wash hand basin, push button WC, heated towel rail, tiled floors, extended tiled splashbacks, extractor fan, obscure glazed window, ceiling light point.

FIRST FLOOR LANDING

Having window to side elevation, ceiling light point, access to loft space.

BEDROOM ONE

14' 2" (maximum into bay window) x 10' 6" (4.32m x 3.20m)
Having feature bay window to front elevation, radiator, ceiling light point, ornamental fireplace with tiled hearth and surround.

BEDROOM TWO

11' 9" x 11' 0" (3.58m x 3.35m)
Having window to side elevation, radiator, ceiling light point.

BEDROOM THREE

9' 1" x 7' 8" (2.77m x 2.34m)
Having window to front elevation, ceiling light point.

FAMILY BATHROOM

7' 7" (maximum including airing cupboard) x 8' 4" (2.31m x 2.54m)
Having cast iron bath with wall mounted electric shower above, wash hand basin, WC, two obscure glazed windows to rear elevation, radiator, tiled splashbacks, ceiling light point, airing cupboard housing the hot water cylinder with slatted linen shelving within.





ANNEXE

Having its own independent partially obscure glazed front entrance door through to: -

HALLWAY

Having radiator, ceiling light point, built-in cloak cupboard providing storage, door through to: -

LOUNGE DINER

21' 1" x 11' 1" (6.43m x 3.38m)

Having window to rear elevation, French doors leading to the garden, two radiators, two ceiling light points, TV aerial point, wiring for satellite TV.

KITCHEN

10' 0" (maximum) x 8' 10" (maximum) (3.05m x 2.69m)

Having roll edge work surfaces, inset stainless steel sink and drainer, base level storage units, matching eye level wall units, space for twin height fridge freezer, plumbing for automatic washing machine, ceiling light point, radiator, window to side elevation, electric fuse box.

BEDROOM

12' 3" x 11' 7" (3.73m x 3.53m)

Having window to rear elevation, radiator, ceiling light point.

BATHROOM

8' 4" x 7' 3" (2.54m x 2.21m)

Having panelled bath with mixer tap and hand held shower attachment, pedestal wash hand basin, push button WC, obscure glazed window to front elevation, radiator, ceiling light point, extractor fan.



**SHARMAN
BURGESS** Est 1996

EXTERIOR

The property is situated on a plot of approximately 0.2 Acres (s.t.s) and is approached via five bar double gates leading to the driveway, which provides off road parking, is served by outside lighting and an outside tap. The front garden is predominantly laid to lawn with flower and shrub borders and hedging to the front boundaries. There is also an outside floor mounted Warmflow oil central heating boiler.

REAR GARDEN

Being initially laid to a paved patio seating area leading to the remainder which is predominantly laid to lawn, with plants and shrubs interspersed throughout. The garden houses two timber stores and an approximate 10ft x 6ft greenhouse situated on a paved base. The rear garden is enclosed by hedging and served by outside lighting. The garden also houses the oil tank.

SERVICES

Mains water and electricity are connected. Drainage is to a private system, The property is served by oil central heating.

REFERENCE

24072025/29315750/PEN



**SHARMAN
BURGESS** Est 1996

Do you need Mortgage Advice?



Your home may be repossessed if you do not keep up repayments on your mortgage

YELLOW MORTGAGES

Mortgage and Protection Broker

01205 631291

www.yellowfinancial.co.uk

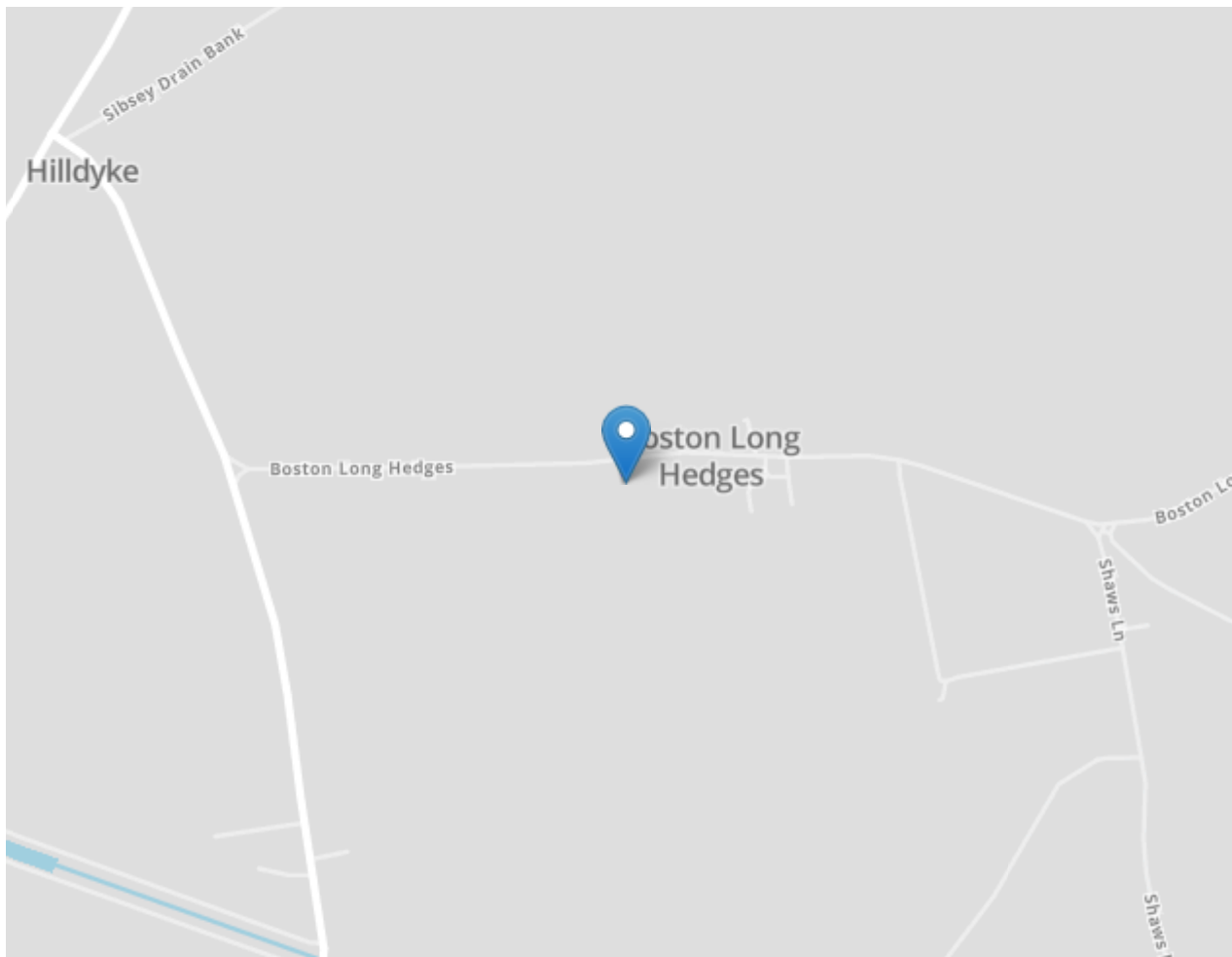
AGENT'S NOTES

Sharman Burgess have not tested any equipment or central heating which is included within the sale. Purchasers are advised to satisfy themselves as to working order and/or condition. These sales particulars are intended for guidance only and do not constitute part of an offer or contract. Details and statements should not be relied upon as representations of fact, and prospective purchasers are advised to satisfy themselves by inspection or otherwise as to the correctness of each and every item.

Sharman Burgess provide a range of optional services to buyers and sellers. If you require help arranging finance, we can refer you to our in-house mortgage specialists, Yellow Financial services Ltd.

Sharman Burgess Limited are introducers only to Yellow Financial Services Ltd which are an appointed representative of The Openwork Partnership, a trading style of Openwork Limited, which is authorised and regulated by the Financial Conduct Authority. If you choose to instruct Yellow Financial Services as a result of a referral from us, we may receive a fixed fee of £150.

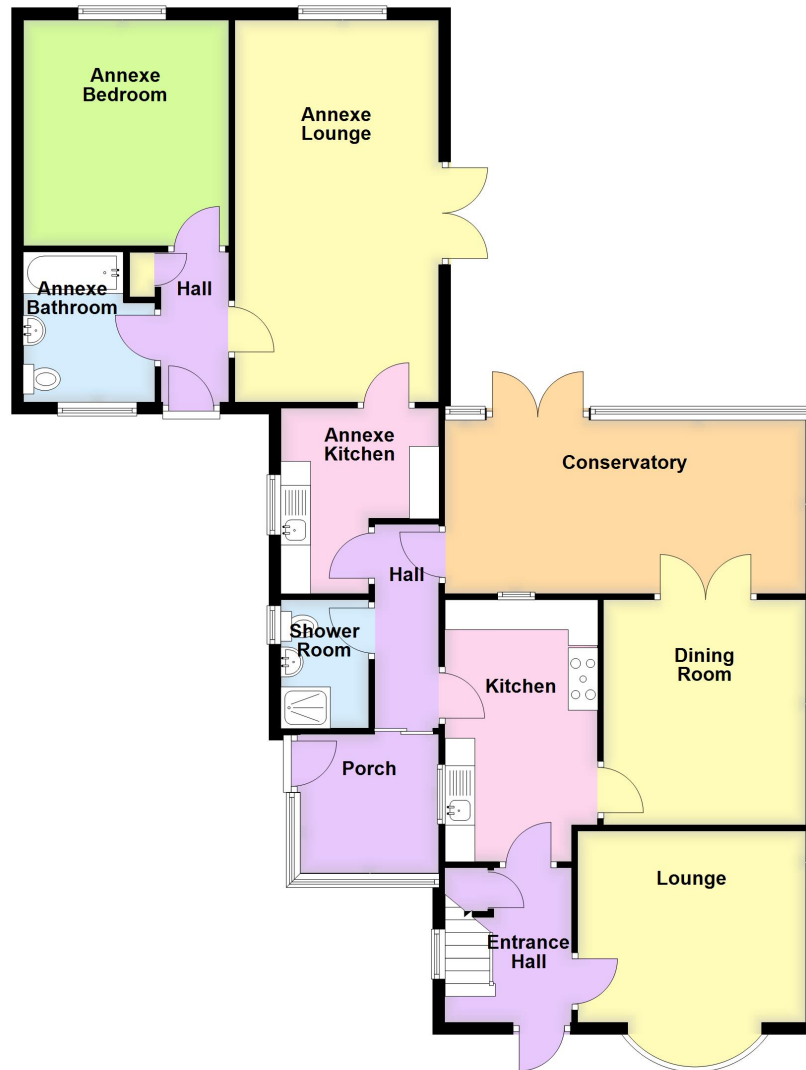
If you require a solicitor to handle your transaction, we can refer you to one of several local companies. Should you choose to instruct the solicitors following referral from us, we may receive a fee of £100 upon completion. For more information, please call us on 01205 361161.



SHARMAN BURGESS

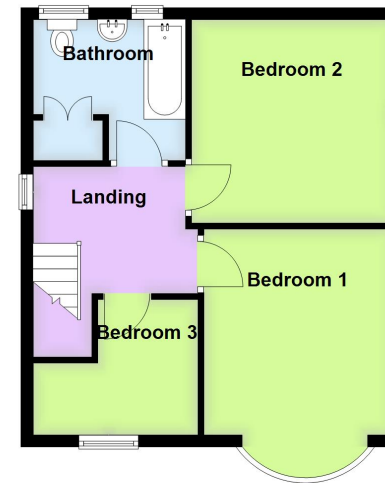
Ground Floor

Approx. 127.6 sq. metres (1373.2 sq. feet)



First Floor

Approx. 42.8 sq. metres (460.4 sq. feet)



Total area: approx. 170.3 sq. metres (1833.6 sq. feet)

**SHARMAN
BURGESS** Est 1996

t: 01205 361161
e: sales@sharmanburgess.com
www.sharmanburgess.co.uk

