



Flat 1, 41 Collington Avenue, Bexhill-on-Sea,  
East Sussex, TN39 3PX

£400,000



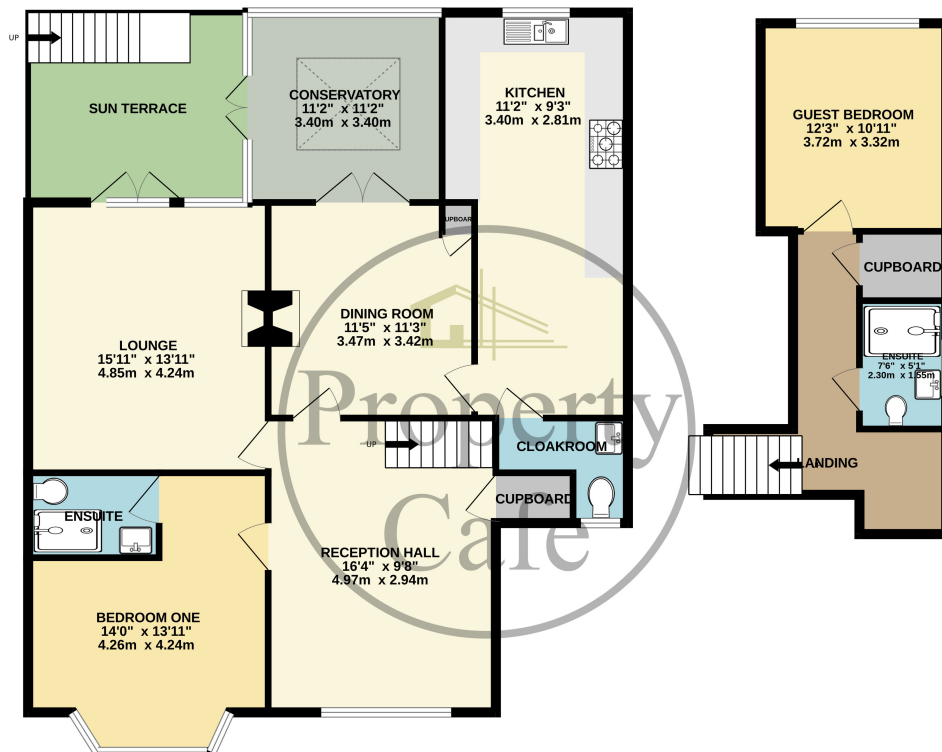
- Stunning Split Level Apartment
- Two Double Bedrooms (Both En-Suite)
- Three Reception Rooms
- Spacious Dining Room
- Sitting Room With Feature Fireplace
- Newly Installed Fitted Kitchen Area
- Conservatory & Raised Decked Patio Area
- Lovely Private South Facing Rear Garden
- Triple Glazed Windows & Central Heating
- Own Private Entrance Door
- Beautifully Presented Decor Throughout
- Concrete Base already in place in garden for 12ft x 8ft shed.
- Sought After Collington Location.
- Spacious & Flexible Accommodation
- Long Lease & Share Of Freehold
- Internal Viewings Highly Recommended
- Close To Shops & Mainline Station
- As and when Maintenance charges
- Off road parking





GROUND FLOOR  
1225 sq.ft. (113.8 sq.m.) approx.

1ST FLOOR  
303 sq.ft. (28.2 sq.m.) approx.



HP59 - COLLINGTON AVENUE

TOTAL FLOOR AREA : 1528 sq.ft. (142.0 sq.m.) approx.

Whilst every attempt has been made to ensure the accuracy of the floorplan contained here, measurements of doors, windows, rooms and any other items are approximate and no responsibility is taken for any error, omission or mis-statement. This plan is for illustrative purposes only and should be used as such by any prospective purchaser. The services, systems and appliances shown have not been tested and no guarantee as to their operability or efficiency can be given.



Made with Metropix ©2024