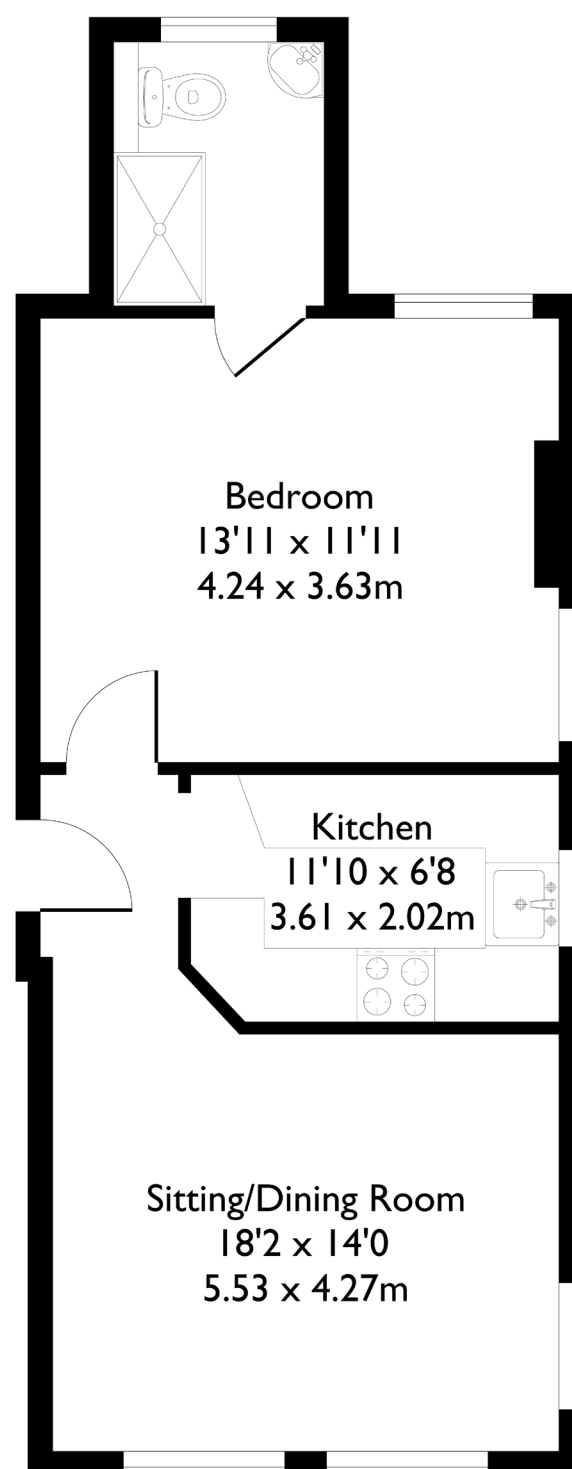


## Creffield Road, London, W5

Approximate Floor Area = 42.7 sq m / 460 sq ft



### Second Floor



#### 1 BEDROOM FLAT

## Creffield Road, W5

£475,000

Welcome to this bright and spacious first-floor, one-bedroom, one-bathroom flat in the heart of Ealing.

As you enter, you're greeted by a semi open-plan kitchen and living area, with wraparound windows that flood the space with natural light. The bedroom is generously sized, featuring an en suite, excellent storage, and plenty of light throughout.

#### FEATURES

- Share of Freehold
- One Bedroom
- One Bathroom
- Semi-open Plan Kitchen/Living
- Ealing Common Station/Ealing Broadway Station (Elizabeth Line)
- Local Schools Nearby
- EPC Rating TBC





#### 1 BEDROOM FLAT

## Creffield Road, W5

This one bedroom conversion situated on the edge of Ealing common, affording easy access to both Ealing Broadway and the common tube stations, shops, and restaurants.

The accommodation comprises open plan fitted kitchen and lounge, large double bedroom with lots of storage and bathroom with shower. other benefits include wood floors throughout and entry phone system.

The building itself comprises just four flats, offering a more private and intimate setting. This property also offers off street parking so for those travelling by car, there are convenient links to Chiswick, Acton, and the North Circular.

EPC Rating TBC.

