



Lincoln Plaza, London, E14 9BN

Cow & Co
LONDON



A simply stunning two double bedroom and two bathroom luxury apartment located brilliantly in the heart of Canary Wharf. The property offers bright and spacious accommodation throughout along with sleek contemporary style fixtures and fittings.

Residents have access to a private cinema, roof terraces, communal spaces, gardens, with separate gym, pool and spa facilities.

The property is located beside the vibrant Canary Wharf, with easy access to over 240 shops, restaurants, bars, galleries and all the other amenities the area has to offer. Canary Wharf exudes a lifestyle like no other.

The development benefits from a 24-HOUR CONCIERGE SERVICE. Tesco local for convenience, while nearby area offers a selection of shops, bars, restaurants and cafes to explore within walking distance

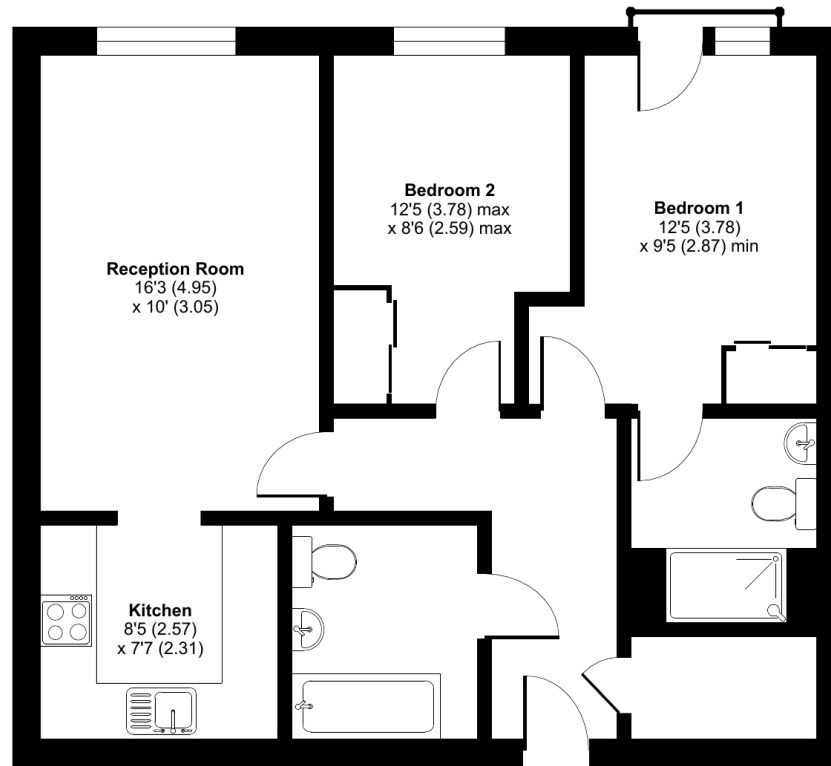


- Available now to rent
- Two double bedroom luxury apartment offering excellent fixtures and fittings throughout
- Two bathrooms (one en-suite)
- Residents only Cinema
- Fantastic roof terraces with wide reaching views across the capital
- Close to South Quay DLR Station
- Canary Wharf location
- 24 hour concierge

Lincoln Plaza, London, E14

Approximate Area = 681 sq ft / 63.2 sq m

For identification only - Not to scale



TWENTY- SECOND FLOOR



Floor plan produced in accordance with RICS Property Measurement Standards incorporating International Property Measurement Standards (IPMS2 Residential). © nchecon 2023. Produced for Cow & Co Properties Ltd. REF: 1023330

Tel: 0208 065 0010
Email: thehub@cowandco-london.com
Web: cowandco-london.com

Agents note: All measurements are approximate and whilst every attempt has been made to ensure accuracy they are for general guidance only and must not be relied on. The fixture and fittings referred to have not been tested and therefore no guarantee can be given that they are in working order. Internal photographs are reproduced for general information and it must not be inferred that any item shown is included with the property.

Cow & Co
LONDON