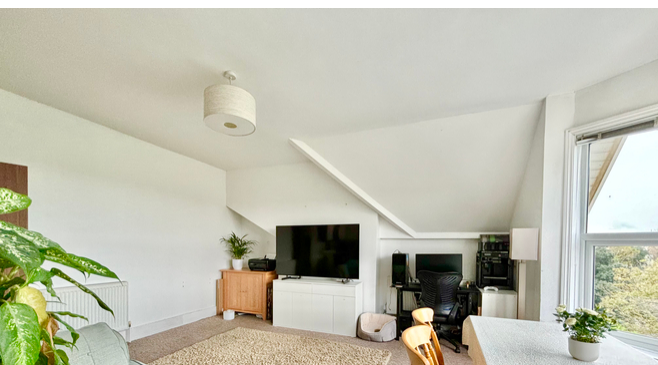




Flat 3, 19 Park Road, Bexhill-on-Sea, East
Sussex, TN39 3HZ

£219,950

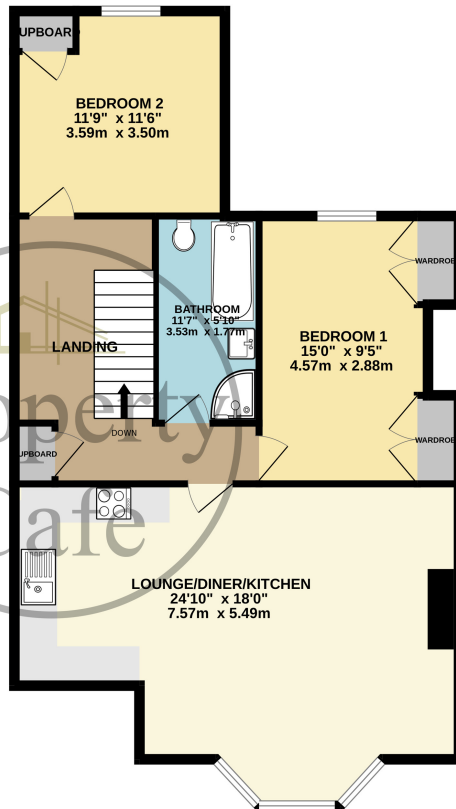
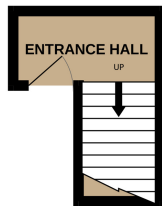


- Two Bedroom Top Floor Apartment With Stunning Views
- Large Open Plan Lounge/Diner/Kitchen
- Modern Fitted Kitchen
- Two Double Bedrooms
- Modern Fitted Bathroom
- Ample Storage Throughout
- Spacious & Naturally Bright Throughout
- Sought After Central Bexhill Location
- Secure Communal Area With Entry Phone System
- Gas Central Heated & Double Glazed
- Sold With No Onward Chain
- Viewing Highly Recommended



1ST FLOOR
64 sq.ft. (5.9 sq.m.) approx.

2ND FLOOR FLAT
864 sq.ft. (80.3 sq.m.) approx.



TOTAL FLOOR AREA : 928 sq.ft. (86.2 sq.m.) approx.

Whilst every attempt has been made to ensure the accuracy of the floorplan contained here, measurements of doors, windows, rooms and any other items are approximate and no responsibility is taken for any error, omission or mis-statement. This plan is for illustrative purposes only and should be used as such by any prospective purchaser. The services, systems and appliances shown have not been tested and no guarantee as to their operability or efficiency can be given.
Made with Metropix ©2024