

FOR SALE

£140,000 Freehold



48 Alfred Terrace, Walton on the Naze, Essex. CO14 8PB

- One-bedroom freehold property
- Conservatory/utility area
- Roof Terrace
- Close to seafront, shops, and local amenities
- Ideal first-time buy, investment, or holiday home
- No onward chain
- Gas Central Heating
- Double Glazing
- Parking Available



PROPERTY DESCRIPTION

Just a short walk from the seafront and town centre, this deceptively spacious freehold one-bedroom house is ideal for first-time buyers, investors or anyone seeking a coastal retreat. Arranged over two floors, the accommodation comprises a bright dual-aspect lounge, a fitted kitchen with ample storage, and a ground-floor bathroom with shower over bath. To the rear, a versatile conservatory/utility area opens to the outside. Upstairs, a generous double bedroom with built-in storage leads onto a private balcony —perfect for secluded outdoor seating. Further benefits include gas central heating, double glazing, a flat-roofed external area with rear access and parking available. Offered with no onward chain, this unique home provides excellent living space and superb scope for personalisation.



ROOM DESCRIPTIONS

GROUND FLOOR

CONSERVATORY

8' 0" x 15' 8" (2.44m x 4.78m) The conservatory offers a practical space for storage or utility use, with access to the rear of the property. The interior would benefit from general updating and improvement.

KITCHEN

8' 10" x 9' 1" (2.69m x 2.77m) Fitted with a range of wood-effect units with contrasting worktops and tiled splashbacks, inset stainless steel sink, electric oven with hob and extractor, tiled flooring, window to side, and space for fridge freezer.

BATHROOM

6' 7" x 8' 10" (2.01m x 2.69m) White three-piece suite comprising panelled bath with wall-mounted electric shower, pedestal wash basin and low-level WC; part-tiled walls, tiled floor, obscured double glazed window, chrome heated towel rail.

LOUNGE

11' 3" x 15' 8" (3.43m x 4.78m) The lounge features wooden flooring, a wall-mounted radiator, and a window to the side aspect. Includes an open staircase and is neutrally decorated.

FIRST FLOOR

BEDROOM

15' 0" x 15' 8" (4.57m x 4.78m) Double bedroom with side aspect window, fitted carpet, radiator, artex ceiling, and door leading to roof terrace.

ROOF TERRACE

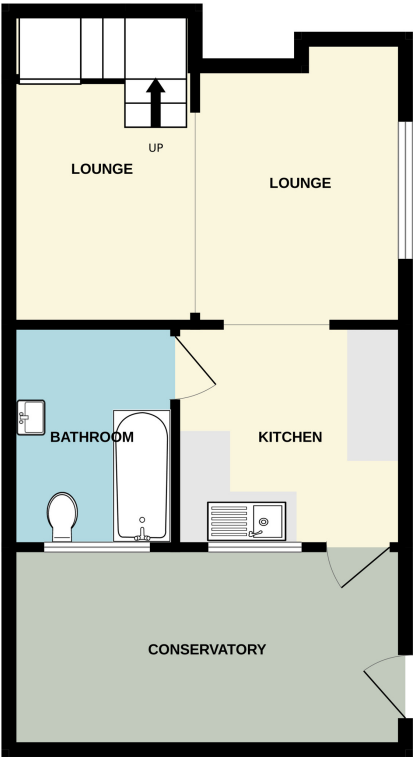
12' 1" x 15' 8" (3.68m x 4.78m) Spacious roof terrace with metal railing, offering a private outdoor area with elevated views over Walton. Accessed directly from the main bedroom.



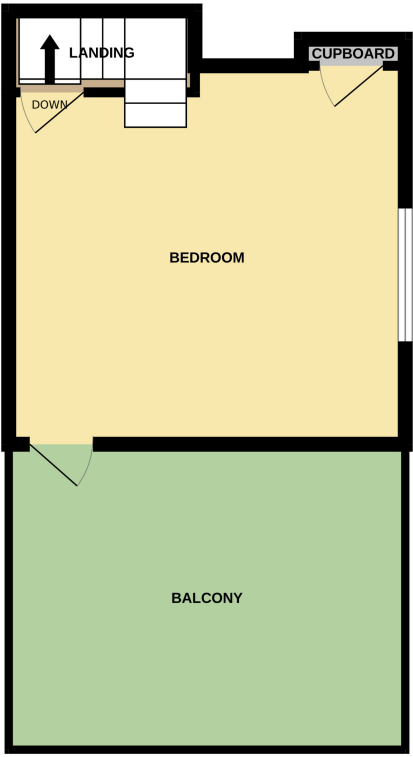
FLOORPLAN & EPC



GROUND FLOOR

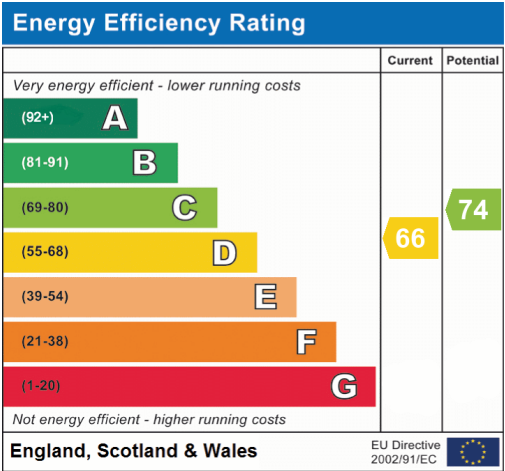


1ST FLOOR



ALFRED TERRACE

Whilst every attempt has been made to ensure the accuracy of the floorplan contained here, measurements of doors, windows, rooms and any other items are approximate and no responsibility is taken for any error, omission or mis-statement. This plan is for illustrative purposes only and should be used as such by any prospective purchaser. The services, systems and appliances shown have not been tested and no guarantee as to their operability or efficiency can be given.
Made with Metropix ©2025



Frinton-On-Sea
148, Pole Barn Lane, Frinton-on-Sea, CO13 9NG
01255 852929
sales@mymovingplaces.com