

£250,000
Leasehold



THOMAS CONNOLLY
ESTATE AGENTS | LETTING AGENTS | NEW HOMES | PROPERTY MANAGEMENT



Summary of Property

Thomas Connolly Estate Agents are delighted to present this two double bedroom apartment located within Dakota House, The Hub, Central Milton Keynes. The iconic building is a very well presented property that enjoys wonderful views.

In brief the property comprises; entrance hall with storage cupboards, sitting / dining room, kitchen with integrated appliances, bedroom one with en-suite and built in wardrobe, bedroom two and bathroom. Outside it benefits from secure underground parking for one car.

Please contact us for further information or to confirm your viewing appointment.

Room Descriptions

ENTRANCE HALL

SITTING ROOM

12' 7" x 17' 11" (3.84m x 5.46m)

KITCHEN

6' 9" x 12' 7" (2.06m x 3.84m)

BEDROOM ONE

10' 0" x 13' 4" (3.05m x 4.06m)

EN SUITE TO MAIN BEDROOM

BEDROOM TWO

10' 9" x 9' 10" (3.28m x 3.00m)

MAIN BATHROOM

OFF ROAD PARKING FOR 1 CAR

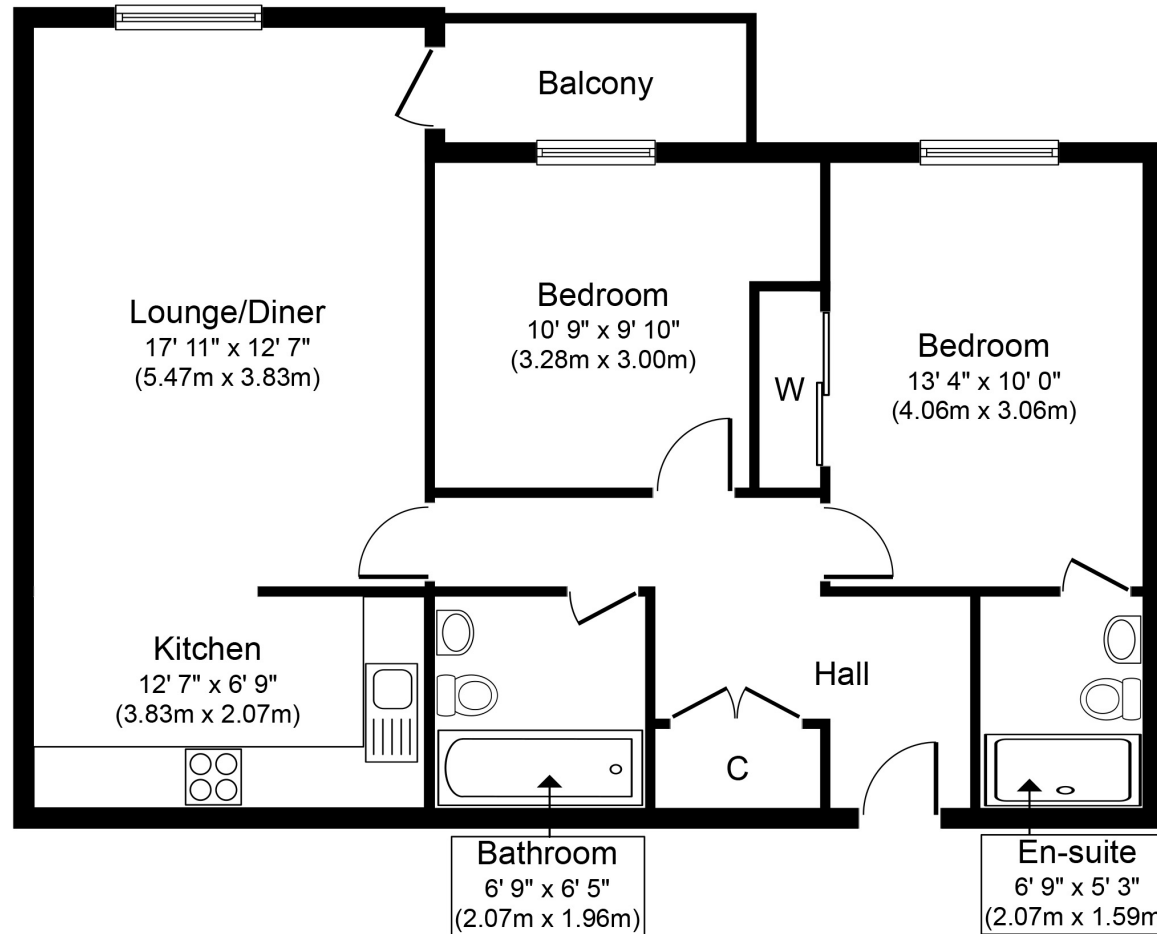
PLEASE NOTE

These property particulars do not constitute part or all of an offer or contract. All measurements are stated for guidance purposes only and may be incorrect. Details of any contents mentioned are supplied for guidance only and must also be considered as potentially incorrect. Thomas Connolly Estate Agents advise perspective buyers to recheck all measurements prior to committing to any expense. We confirm we have not tested any apparatus, equipment, fixtures, fittings or services and it is within the prospective buyers interests to check the working condition of any appliances prior to exchange of contracts. Thomas Connolly Estate Agents has not sought to verify the legal title of the property and the buyers must obtain verification from their solicitor



THOMAS CONNOLLY

ESTATE AGENTS | LETTING AGENTS | NEW HOMES | PROPERTY MANAGEMENT



Ground Floor

Approx. Gross Internal Floor Area 729 sq. ft. (67.8 sq. m.)

Whilst every attempt has been made to ensure the accuracy of the floor plan contained here, measurements of doors, windows, rooms and any other items are approximate and no responsibility is taken for any error, omission, or mis-statement. This plan is for illustrative purposes only and should be used as such by any prospective purchaser or tenant. The services, systems and appliances shown have not been tested and no guarantee as to their operability or efficiency can be given.

Copyright V360 Ltd 2024 | www.houseviz.com