



# Guide Price From £550,000

## The Green, Sidcup, Kent, DA14 6BS

**Christopher Russell**  
PROPERTY SERVICES



AGENTS NOTES: No statement in these particulars is to be relied upon as representations of fact and purchasers should satisfy themselves by inspection, or otherwise, as to the accuracy of the statements contained herein. These details do not constitute any part of any offer or contract. Christopher Russell have not tested any equipment or heating system mentioned and purchasers are advised to satisfy themselves as to their working order. Great care is taken when measuring but measurements should not be relied upon for ordering carpets, equipment etc.

Christopher Russell LLP. Registered in Cardiff. Partnership No. OC329088

**Christopher Russell Property Services**

33 The Oval, Sidcup, Kent DA15 9ER • Tel: 020 8300 1234 Fax: 020 8300 6530 • [sales@christopher-russell.co.uk](mailto:sales@christopher-russell.co.uk)



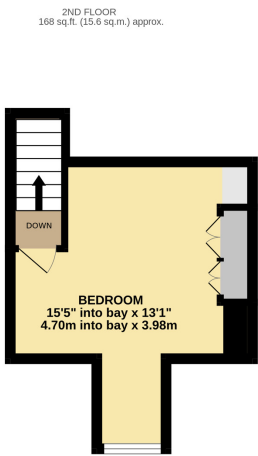
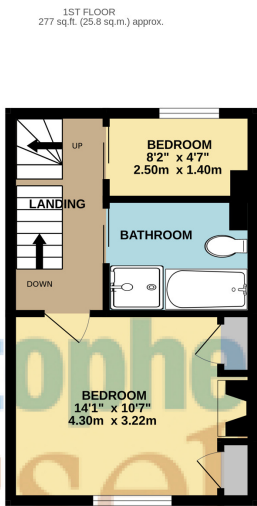
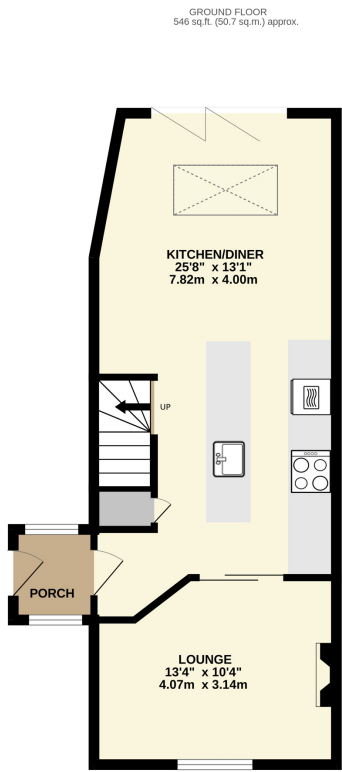
Guide Price From £550,000 to £575,000

A charming three-storey, locally listed period cottage built circa 1850, Thyme Cottage has been beautifully extended and refurbished to blend timeless character with modern luxury. Set in the heart of Sidcup’s prestigious ‘The Green’ conservation area, this exceptional home offers a rare chance to enjoy high-spec contemporary living in a peaceful, historic setting.

Inside, the open-plan kitchen/family room is the heart of the home, with quartz worktops, a central island, integrated appliances and bi-fold doors that open to a private garden – ideal for indoor-outdoor living. The adjoining lounge features a cosy log burner, while upstairs offers three bedrooms (two with fitted wardrobes), and a luxurious bathroom with a bath and separate walk-in shower. The top-floor master bedroom is a tastefully designed space with charming views across The Green.

Outside, the cottage offers kerb appeal, off-street parking, a pretty front garden and a secluded south facing rear garden perfect for summer nights. Just a short walk to Sidcup High Street, excellent schools, and the mainline station, this is a truly turnkey home in one of the area’s most desirable locations – where heritage meets modern living’.

Council Tax Band D.



TOTAL FLOOR AREA : 991 sq.ft. (92.1 sq.m.) approx.

Whilst every attempt has been made to ensure the accuracy of the floorplan contained here, measurements of doors, windows, rooms and any other items are approximate and no responsibility is taken for any error, omission or mis-statement. This plan is for illustrative purposes only and should be used as such by any prospective purchaser. The services, systems and appliances shown have not been tested and no guarantee as to their operability or efficiency can be given.

Made with Metropix ©2025