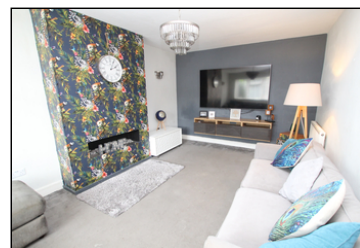
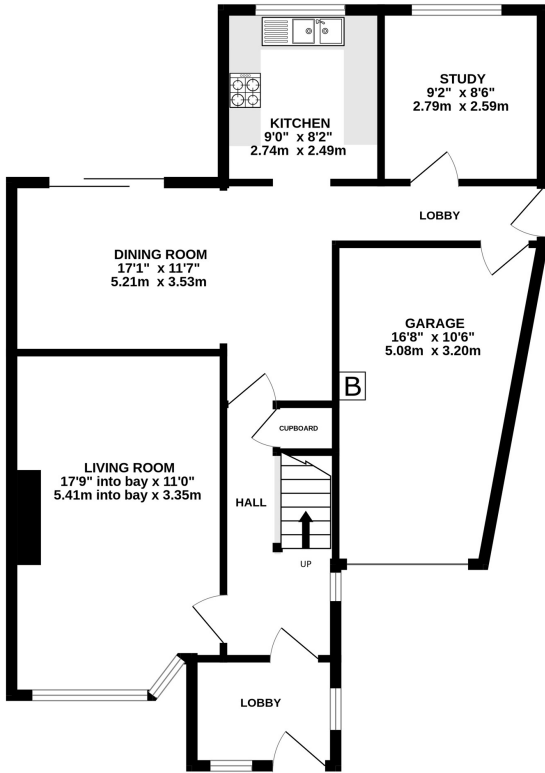


**Ford Close, Shepperton, TW17 0EA**  
**£699,950**

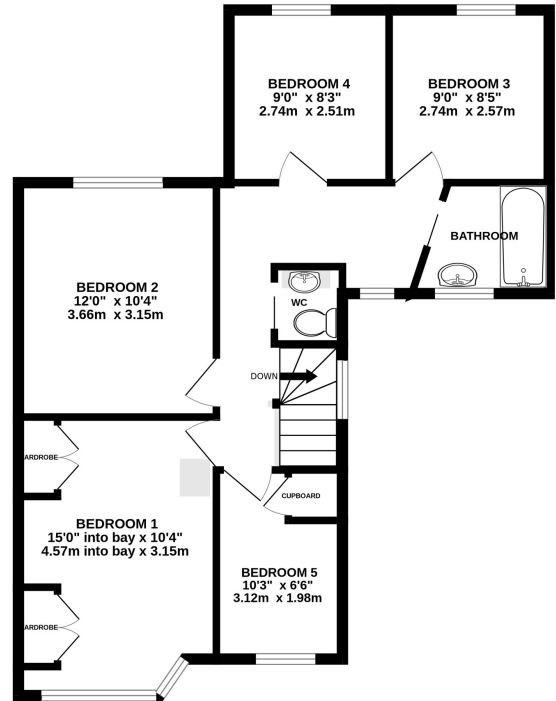


- Five Bedroom Semi Detached Home
- Quiet cul-de-sac location
- Catchment Area for Littleton, Saxon and Thamesmead Schools
- Integral Garage and Driveway Parking
- Additional Bedroom/Study Downstairs
- 80ft Rear Garden
- Scope For Improvement
- Freehold, Council Tax Band F £3328

GROUND FLOOR  
807 sq.ft. (74.9 sq.m.) approx.

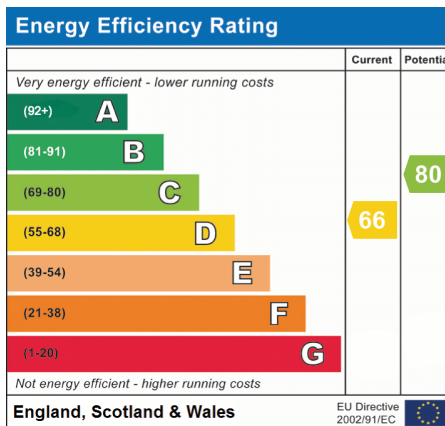


1ST FLOOR  
645 sq.ft. (59.9 sq.m.) approx.



TOTAL FLOOR AREA : 1452 sq.ft. (134.9 sq.m.) approx.

Whilst every attempt has been made to ensure the accuracy of the floorplan contained here, measurements of doors, windows, rooms and any other items are approximate and no responsibility is taken for any error, omission or mis-statement. This plan is for illustrative purposes only and should be used as such by any prospective purchaser. The services, systems and appliances shown have not been tested and no guarantee as to their operability or efficiency can be given.  
Made with Metropix ©2024



We have not tested the services or domestic appliances so we cannot verify that they are in working order. The buyer is advised to obtain verification from their solicitor or surveyor. These particulars form no part of any offer or contract and their accuracy cannot be guaranteed.