

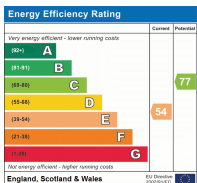


FOR SALE

Whitegate Gardens, HARROW HA3 6BP

Set in a leafy part on the borders of Harrow Weald and Stanmore, we offer you an opportunity to acquire this very well presented four double bedroom semi-detached property. This home briefly comprises of a through lounge, conservatory, large modern family bathroom, en-suite to loft bedroom, tranquil rear garden and off-street parking for one vehicle. The 4th bedroom is set on the second floor and has beautiful views of London which can be observed via the Juliet balcony. Stanmore and Harrow Wealdstone Stations are within close proximity and can be accessed via the many bus stop routes which are only a short walk away including H12, 182, 340, 140 and more. Please note that this property also falls in the catchment area for Watford Grammar Schools.

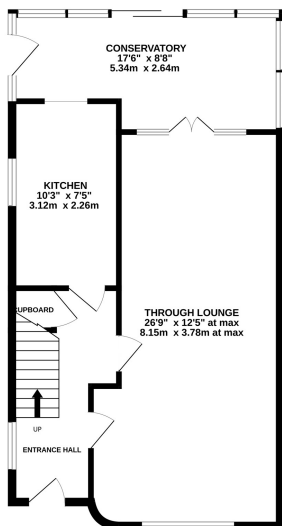
Contact the vendor's Sole Agent Mischa & Co, to arrange your tour!



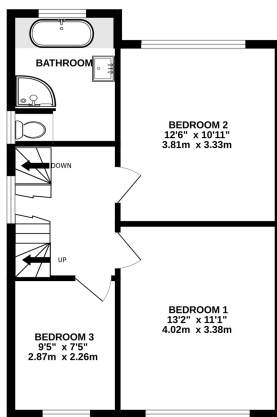
£650,000 Freehold

Floorplan

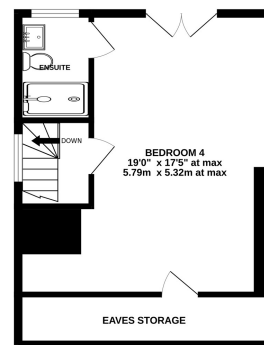
GROUND FLOOR



1ST FLOOR



2ND FLOOR



Whilst every attempt has been made to ensure the accuracy of the floorplan contained here, measurements of doors, windows, rooms and any other items are approximate and no responsibility is taken for any error, omission or mis-statement. This plan is for illustrative purposes only and should be used as such by any prospective purchaser. The services, systems and appliances shown have not been tested and no guarantee as to their operability or efficiency can be given.
Made with Metropix 62023

NB: Please note that all fittings, kitchen appliances and heating systems have not been tested by Mishca & Co Sales & Lettings. Whilst we endeavour to make our sales details accurate and reliable. Room sizes should not be relied upon for carpets and furnishings. If there is any point, which is of particular important to you, please contact our office and we will be pleased to verify any information for you. Do so particularly if contemplating travelling some distance to view this property.

