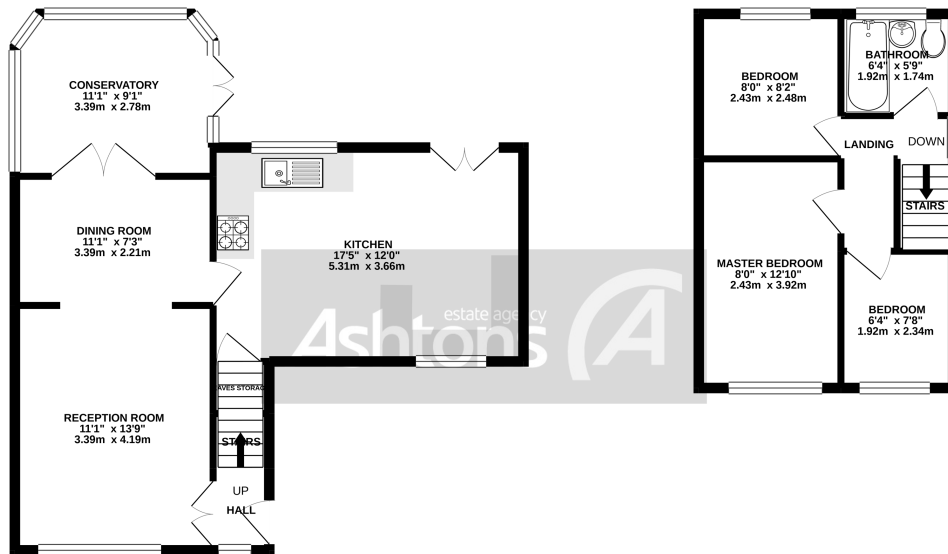




*Bramshill Close, Birchwood. WA3 6TY.*  
*£249,995*

Three bedroom detached house | Three Bedrooms | Corner Plot | Extended | Driveway Parking |  
Modern Kitchen | Private Garden |





TOTAL FLOOR AREA: 875 sq.ft. (81.3 sq.m.) approx.  
 Whilst every attempt has been made to ensure the accuracy of the floorplan contained here, measurements of doors, windows, rooms and any other items are approximate and no responsibility is taken for any error, omission or mis-statement. This plan is for illustrative purposes only and should be used as such by any prospective purchaser. The services, systems and appliances shown have not been tested and no guarantee as to their operability or efficiency can be given.  
 Made with Metropix ©2020

**\*\*\*SIMPLY STUNNING\*\*\*** A beautifully presented, **EXTENDED** three bedroomed detached house, situated within one of Birchwood's most sought after locations. The property **MUST** be viewed to be appreciated. Benefits include a conservatory, contemporary extended kitchen with built-in appliances including a wine fridge, modern bathroom suite with over-bath shower, master bedroom with built-in wardrobes, gas central heating, uPVC double glazed windows, beautifully maintained front and rear gardens, with the added benefit of not being overlooked to the rear, driveway for two cars and rear access to the garden.



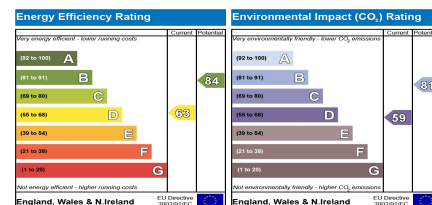
Contact your local office to arrange a viewing:

- Padgate: 01925 479334
- Great Sankey: 01925 454300
- Winwick: 01925 232146
- Stockton Heath: 01925 453400
- St.Helens: 01744 754120
- Wigan: 01942 498862
- Culcheth: 01925 764744
- Ashton-In-Makerfield: 01942 364446
- Newton-Le-Willows: 01925 907770
- Commercial Office: 01925 907709
- Lettings Head Office: 01925 873533
- Financial Services: 01925 221234

**Viewing Arrangements**  
 Viewing is strictly by appointment only through Ashtons Estate Agency.

**Disclaimer Property Details**  
 These particulars, whilst being believed to be accurate are set out as a general outline only for guidance and do not constitute any part of an offer or contract. Intending purchasers should not rely on them as statements of representation of fact, but must satisfy themselves by inspection or otherwise as to their accuracy. We have not carried out a detailed survey nor tested the services, appliances and specific furnishings. The measurements given are approximate. No person in this firm's employment has the authority to make or give any representation or warranty in respect of the property.

All details, photographs and floorplans are the copyright of Ashtons Estate Agency.



How much you can borrow?  
 Speak to a mortgage expert in your local office.

Ashtons Financial Services

Ashtons.net rightmove

PrimeLocation.com Zoopla.co.uk

