

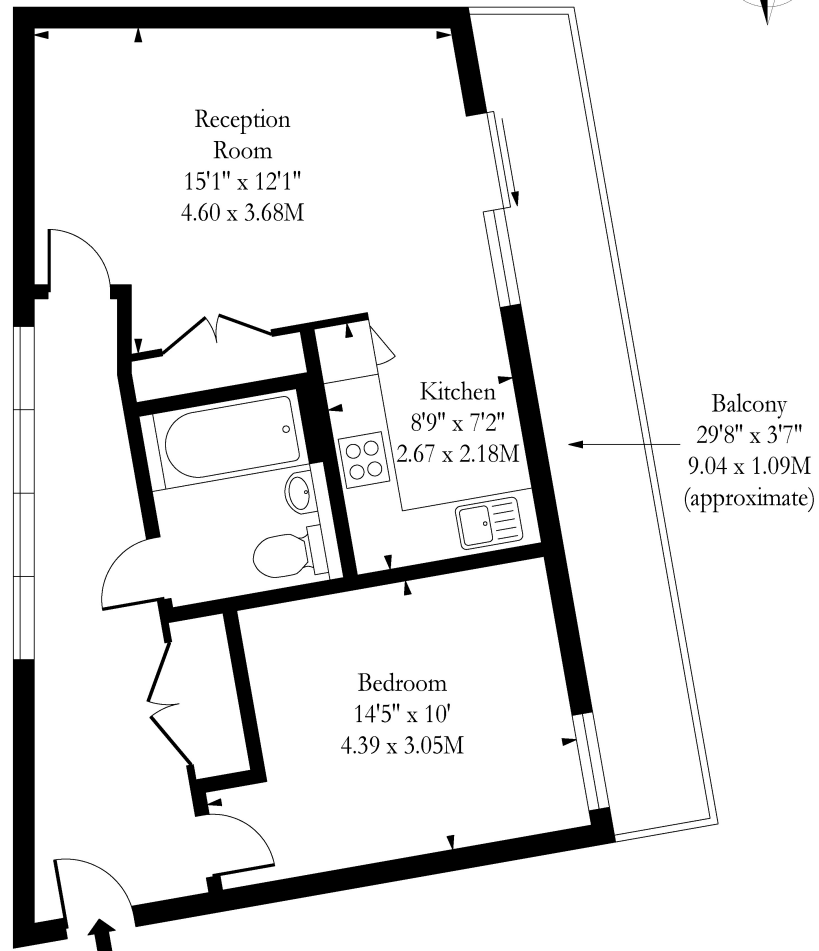
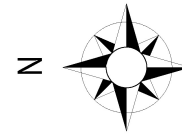


Iverson Road, London, NW6 2RB

£540,000

- Spacious One Bedroom Apartment
- Purpose Built
- Long Lease Remaining
- Fitted Bathroom
- Top Floor Flat (with Lift)
- Open Plan Kitchen / Living Room
- South-Facing Balcony with Amazing Views
- Excellent Location

Iverson Road NW6



Fourth Floor

Approx Gross Internal Area

540 Sq Ft - 50.17 Sq M

Measured in accordance with RICS guidelines. Every attempt is made to ensure accuracy
However all measurements are approximate.
The floor plan is illustrative purposes only and is not to scale

www.tomekphotography.co.uk

