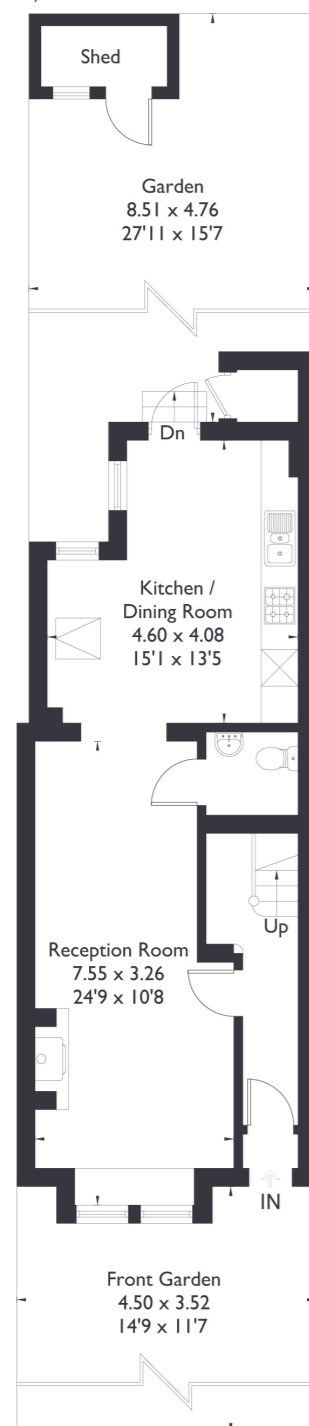
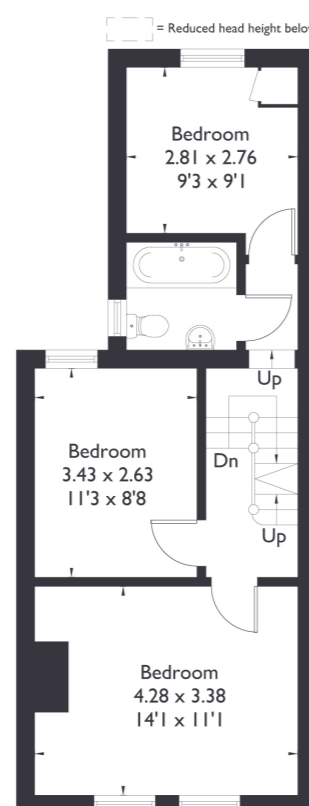


Glenfield Road, W13

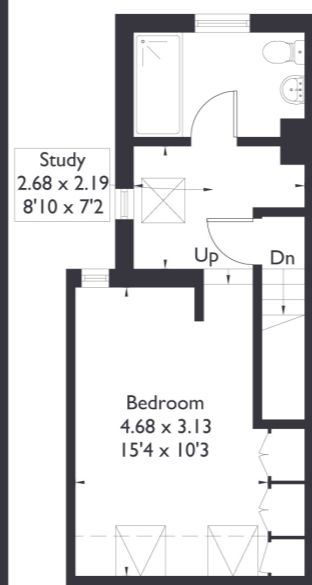
Approximate Floor Area = 119.6 sq m / 1287 sq ft
External Store = 0.9 sq m / 10 sq ft
Total = 120.5 sq m / 1297 sq ft
(Excluding Shed)



Ground Floor



First Floor



Second Floor



4 BEDROOM HOUSE

Glenfield Road, W13

£1,050,000

Welcome to this four bedroom, two bathroom home with a downstairs W/C, ideally located in the heart of Northfields.

As you step inside, you're greeted by a spacious through reception and dining area, perfect for entertaining, which flows seamlessly into a well proportioned kitchen leading out to a lovely west-facing garden.

FEATURES

- Four Bedrooms
- Two Bathrooms/Downstairs W/C
- Northfield Amenities
- West Ealing Station/Northfields Station
- Ealing Fields/ Fielding Primary School
- EPC Rating D



4 BEDROOM HOUSE

Glenfield Road, W13

The home offers four generously sized bedrooms, including a loft conversion complete with an en-suite bathroom.

Period features are thoughtfully retained throughout, and natural light floods the interior, creating a bright and airy feel. Located within the catchment area for the highly regarded Fielding Primary School and Ealing Fields, the property is also just a short walk from both Northfields and West Ealing stations, as well as all the local amenities Northfields has to offer. EPC Rating TBC.

