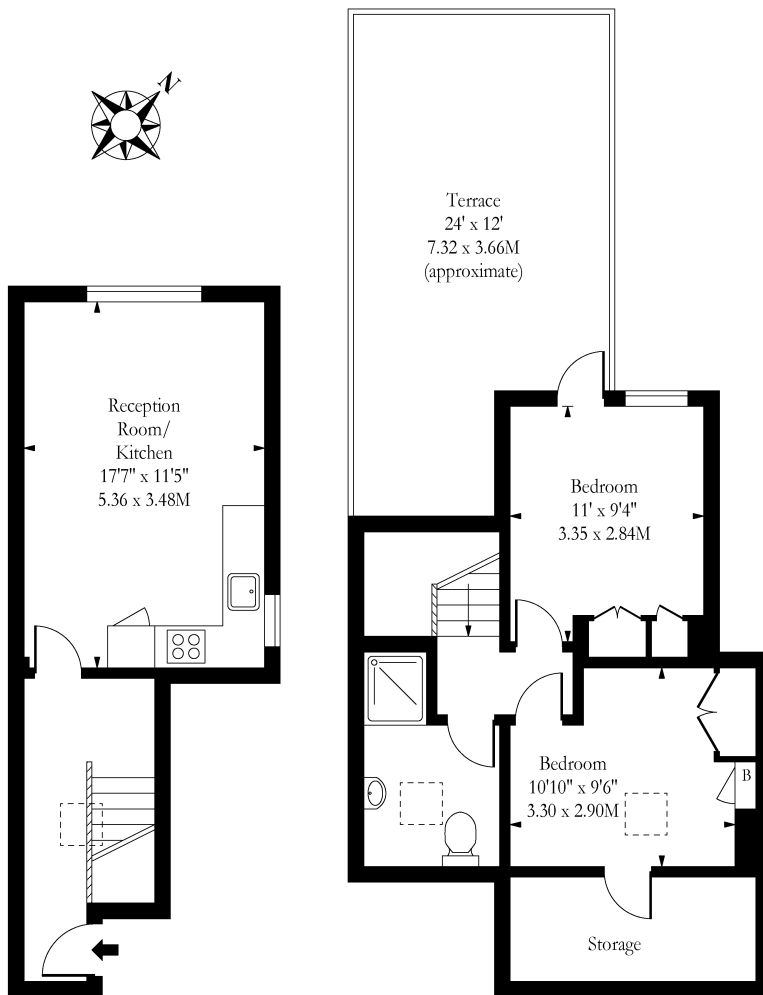


## Winchester Avenue, London, NW6

£2,300 pcm

- Private Terrace
- Two Double Bedroom Apartment
- Close to Brondesbury Park Station
- Part Furnished
- Brand New Refurbishment
- Fitted Wardrobes
- Available Now

## Winchester Avenue, NW6



First Floor

Second Floor

Approx Gross Internal Area 644 Sq Ft - 59.83 Sq M

Measured in accordance with RICS guidelines. Every attempt is made to ensure accuracy  
However all measurements are approximate.  
The floor plan is illustrative purposes only and is not to scale

[www.tomekphotography.co.uk](http://www.tomekphotography.co.uk)

