

PAUL ALEXANDER
MORTGAGE CONSULTANTS

For all insurance and mortgage needs,
please call Paul Alexander Mortgage Consultants
on 020 8997 3915

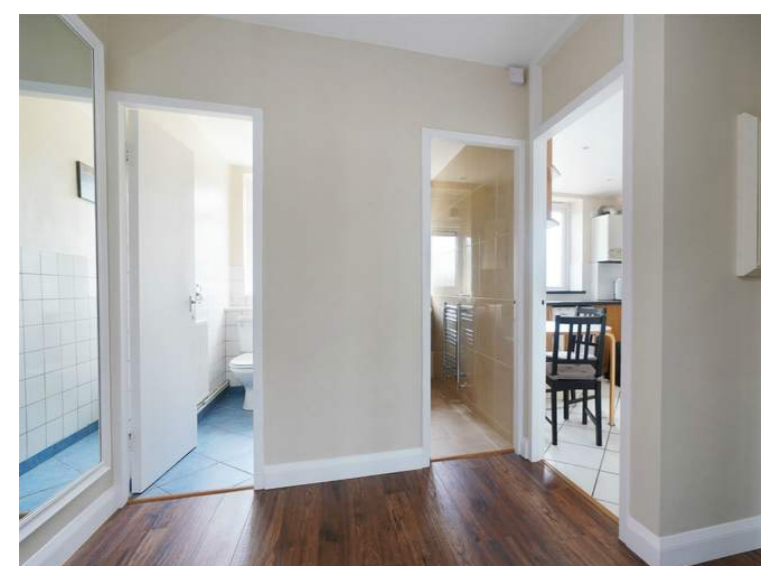
LONDON'S LOCAL AGENT
enquiries@orchardsoflondon.com
020 3962 6000 | orchardsoflondon.com
Westworld West Gate London W5 1DT

BEECH AVENUE

£1,900 pcm

- Three bedroom apartment
- Third floor
- Private balcony
- STUDENT FRIENDLY
- 855 sq ft
- Close to amenities
- Near transport links
- Bright and airy
- Spacious throughout
- Excellent local schooling

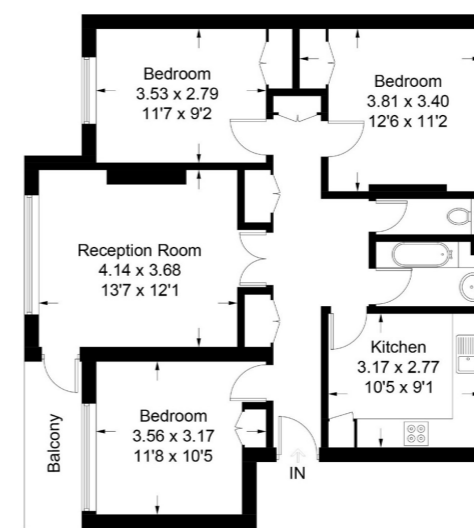
Semi Furnished
LONDON'S LOCAL AGENT
enquiries@orchardsoflondon.com
020 3962 6000 | orchardsoflondon.com
Westworld West Gate London W5 1DT



Orchards of London are delighted to bring to the lettings market this wonderful and spacious three bedroom apartment located on the third floor of this purpose built apartment block. The property comprises of three well sized bedrooms with storage, a kitchen, family bathroom with separate toilet and a bright reception room which leads out to a private balcony. Beech Avenue is located close to a variety of parks such as Acton Park and is near amenities, health clubs, restaurants and cafes. The property is located parallel to The Vale making the journey to Ealing and Westfield an easy one. Commuters are near Acton Central Overground whilst motorists are near Westway.

Beech Avenue

Approximate Gross Internal Area = 79.4 sq m / 855 sq ft



Third Floor

Measured in accordance with RICS Code of Measuring Practice. To be used for identification and guidance purposes only. Whilst every care is taken in the preparation of this plan, please check all dimensions, shapes and compass bearings before making any decisions reliant upon them. www.london58.com © 2018 hello@london58.com