



# Priors Hill

Pirton, Hitchin,  
Hertfordshire, SG5 3QA  
Guide Price £600,000

country  
properties



Located in the heart of the picturesque village of Pirton, this beautifully maintained three bedroom semi-detached home offers a perfect balance of countryside charm and modern living. Positioned on the desirable Priors Hill, the property enjoys a peaceful setting with scenic views and excellent access to local amenities and transport links.

The standout feature of this home is the extended open plan kitchen and dining room to the rear, creating a bright and spacious hub for family life and entertaining. With stylish cabinetry, integrated appliances, and ample room for a large dining table, this space has Bi-fold doors which open directly onto the private rear garden.

The ground floor also includes a welcoming entrance porch, a generous lounge, downstairs WC and utility space and practical storage spaces. Upstairs, there are three well proportioned bedrooms, including a spacious principle bedroom, and a modern family bathroom.

Pirton is a highly sought-after village known for its strong community spirit, beautiful countryside walks, and is steeped in history dating back to Saxon times. It's just a short drive from Hitchin's bustling town centre and mainline railway station, offering direct services to London Kings Cross and Cambridge.

- A Characterful semi-detached family home
- Three generous bedrooms
- Extended open plan kitchen/diner to the rear
- Downstairs WC and utility room
- Off road parking
- Desirable countryside location
- 3.2 miles, 7 mins drive to Hitchin town centre (as per Google Maps)
- 4.5 miles, 10 min drive to Hitchin train station (as per Google Maps)





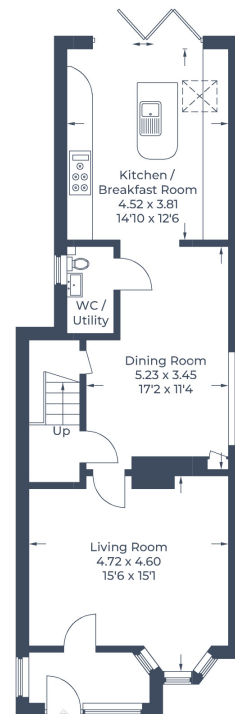




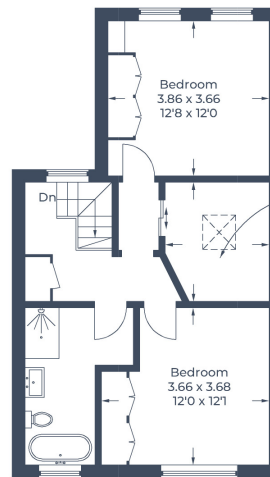




Approximate Gross Internal Area  
 Ground Floor = 65.0 sq m / 700 sq ft  
 First Floor = 52.7 sq m / 567 sq ft  
 Outbuilding = 11.4 sq m / 123 sq ft  
 Total = 129.1 sq m / 1,390 sq ft



**Ground Floor**



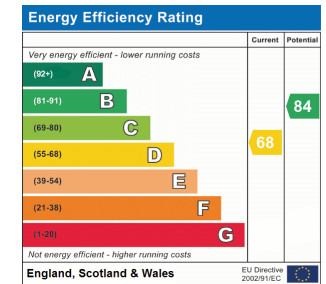
**First Floor**



(Not Shown In Actual Location / Orientation)

Illustration for identification purposes only,  
 measurements are approximate, not to scale.

© CJ Property Marketing Produced for Country Properties



All measurements are approximate and quoted in metric with imperial equivalents and for general guidance only and whilst every attempt has been made to ensure accuracy, they must not be relied on. The fixtures, fittings and appliances referred to have not been tested and therefore no guarantee can be given and that they are in working order. Internal photographs are reproduced for general information and it must not be inferred that any item shown is included with the property. For a free valuation, contact the numbers listed on the brochure

## Viewing by appointment only

Country Properties | 6, Brand Street | SG5 1HX

T: 01462 452951 | E: hitchin@country-properties.co.uk

www.country-properties.co.uk

country  
properties



country  
properties