

TO LET

Galloway Road,
Shepherd's Bush, W12

Flat
Shepherd's Bush

£630 p/w

3  2  1 



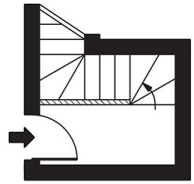
**horton
andgarton**

SALES / LETTINGS / PROPERTY MANAGEMENT

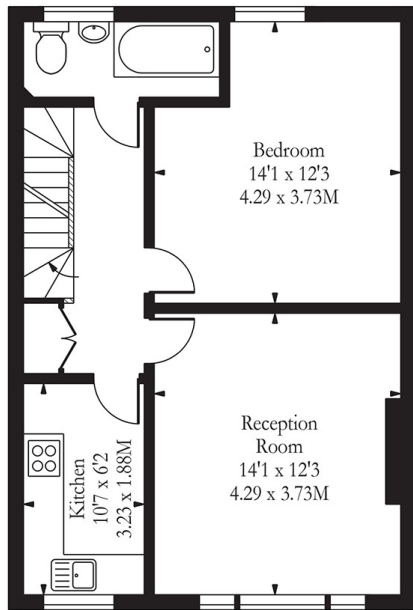
hortonandgarton.co.uk | Sales 020 8819 0510 | Lettings 020 8819 0511
172 King Street, Hammersmith, W6 0QU



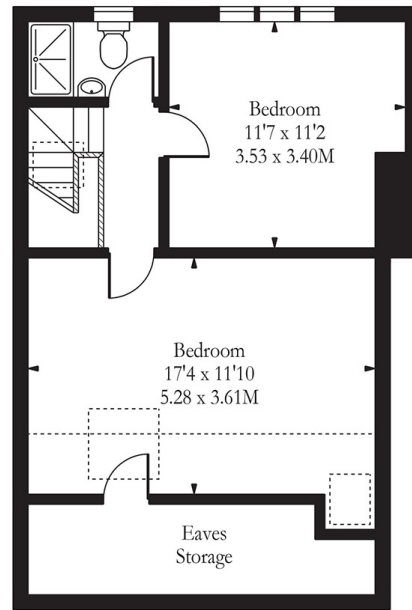
Galloway Road, W12



Ground Floor
Entrance



First Floor

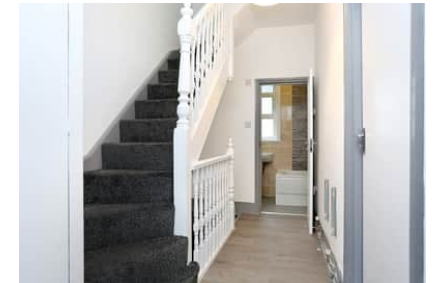


Second Floor

Approx Gross Internal Area 1076 Sq Ft - 99.96 Sq M
(Including Restricted Height Area & Eaves Storage)

Illustration Purposes Only

Whilst every attempt has been made to ensure the accuracy of the floor plan contained here, measurements of doors, windows, rooms and any other items are approximate and no responsibility is taken for any errors, omissions or mis-statements. The plan is for illustrative purposes only, is not to scale and should be used as such by any prospective purchaser.



Three double bedrooms | Two bathrooms | Furnished |
Split-level maisonette | EPC rating D | Shepherd's Bush



hortonandgarton.co.uk
Sales 020 8819 0510
Lettings 020 8819 0511

172 King Street, Hammersmith, W6 0QU