



T: 01909 509001
E: info@bartropanddilks.co.uk
W: www.bartropanddilks.co.uk
A: 78 Bridge Street, Worksop, S80 1JA

FOR SALE

£84,000

Duke Street, CreswellWORKSOP. S80 4AS



Offered for sale with no upward chain, this well-presented and tastefully decorated three-bedroom mid-terrace home is likely to appeal to first-time buyers and investors alike. Benefiting from gas-fired central heating and uPVC double glazing throughout, early viewing is highly recommended. The accommodation briefly comprises a lounge with an archway leading through to the dining room, a kitchen fitted with a good range of units and space for a cooker, a rear lobby, and a ground-floor bathroom fitted with a white suite. To the first floor, the landing gives access to three bedrooms, with Bedroom one benefiting from a built-in wardrobe area. Externally, the property offers a front yard and a rear lawned garden.

Ground Floor

Lounge 4.56m x 3.61m (15' 0" x 11' 10")

The property is entered via a front-facing entrance door leading into the lounge, which features a front-facing window, central heating radiator, and stairs rising to the first floor. An attractive archway opens through to the dining room

Dining Room 3.93m x 3.63m (12' 11" x 11' 11")

with a rear-facing window and central heating radiator.

Kitchen 2.97m x 2.15m (9' 9" x 7' 1")

The kitchen is fitted with a range of wall and base units with complementary work surfaces, incorporating a sink unit with mixer tap, space for a cooker, and plumbing for an automatic washing machine. A side-facing window and central heating radiator complete the space

Rear Lobby

A rear lobby provides access to the rear garden.

Bathroom

The ground floor bathroom is fitted with a white suite comprising a panelled bath with mains-fed shower over, wash hand basin, and low flush WC, complemented by tiled splashbacks, a central heating radiator, and a side-facing window.

First Floor

Landing

Bedroom One 4.61m x 2.59m (15' 1" x 8' 6")

Bedroom One is positioned to the front elevation and benefits from two built-in wardrobes providing ample hanging and storage space, along with a central heating radiator.

Bedroom Two 3.97m x 2.71m (13' 0" x 8' 11")

With a rear facing window and central heating radiator.

Bedroom Three 3.99m x 2.17m (13' 1" x 7' 1")

With a rear facing window and central heating radiator, housing the gas-fired central heating boiler.

Garden

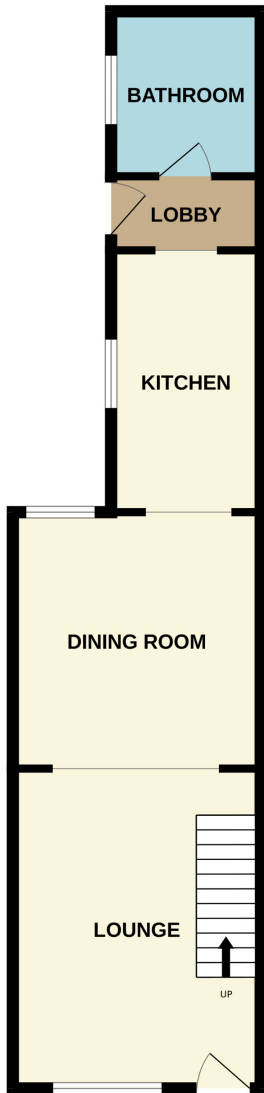
Rear Garden

The property enjoys a forecourt to the front, whilst to the rear there is a lawned garden, offering a pleasant outdoor space.

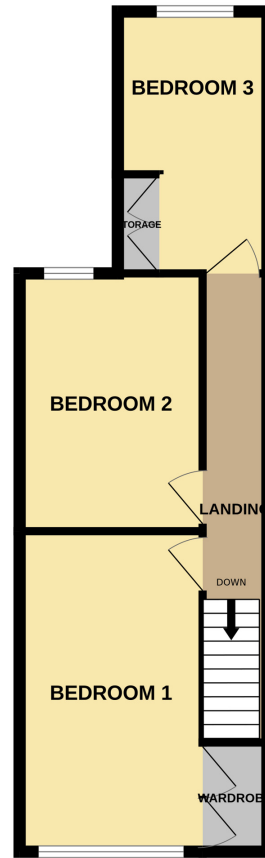




GROUND FLOOR



1ST FLOOR



Whilst every attempt has been made to ensure the accuracy of the floorplan contained here, measurements of doors, windows, rooms and any other items are approximate and no responsibility is taken for any error, omission or mis-statement. This plan is for illustrative purposes only and should be used as such by any prospective purchaser. The services, systems and appliances shown have not been tested and no guarantee as to their operability or efficiency can be given.
Made with Metropix ©2026