

FOR
SALE



10 Cathedral Green Court, Crawthorne Road, Peterborough, Cambridgeshire PE1 4YS

£149,950 - Leasehold

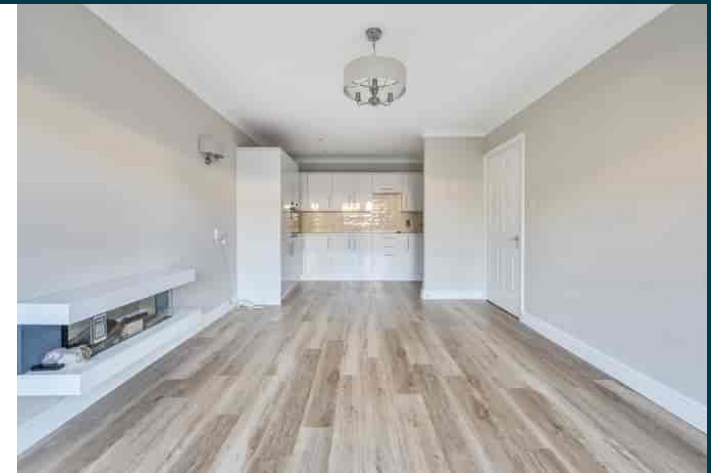
18, Wood Street, Stratford-upon-Avon, CV37 6JF 0800 389 9384 resales@retirementsecurity.co.uk

PROPERTY SUMMARY

A completely refurbished TWO bedroom GROUND floor retirement apartment overlooking the communal gardens and set within Cathedral Green Court in Peterborough, PE1.

POINTS OF INTEREST

- Completely Refurbished to a high standard
- GROUND Floor Two Bedroom Apartment
- Overlooking Communal Gardens
- 2 Year Gas Boiler Servicing Included at Full Asking Price
- 6 Months Paid Service Charge included at Full Asking Price
- £500 towards Moving costs upon Completion at Full Asking Price
- Owners' Lounge, Dining Area, Guest Suite & Gardens
- Active Social Community
- 24 Hour On-site Staff
- A community for owners, run by owners



ROOM DESCRIPTIONS

