



Wheatley Road Corringham SS17 9EF

- Three Bedrooms
- Ground Floor Bathroom
- 16'6ft Kitchen
- 23'5ft Bedroom / Annex Area
- Off Street Parking for Several Vehicles
- Cul-De-Sac Location
- No Onward Chain
- Garage



We are pleased to offer this three bedroom semi detached chalet in a cul-de-sac location. The property features one bedroom upstairs and two downstairs. One of the ground floor bedrooms measures 23'5ft in length and could be used as a potential annex with a bedroom area one end and a lounge area the other. The property has so much to offer an early viewing is recommended to appreciate what is on offer.

£400,000 Freehold

**"To view the full sales particulars,
please visit our website:
www.connollysestates.co.uk"**

Lounge:

11' 0" (max) x 17' 2" (3.35m x 5.23m) Stairs inpeding

Kitchen:

7' 4" x 16' 6" (2.24m x 5.03m)

Ground Floor Bedroom:

8' 11" x 17' 5" (2.72m x 5.31m)

Ground Floor Second Bedroom/Annex Areas:

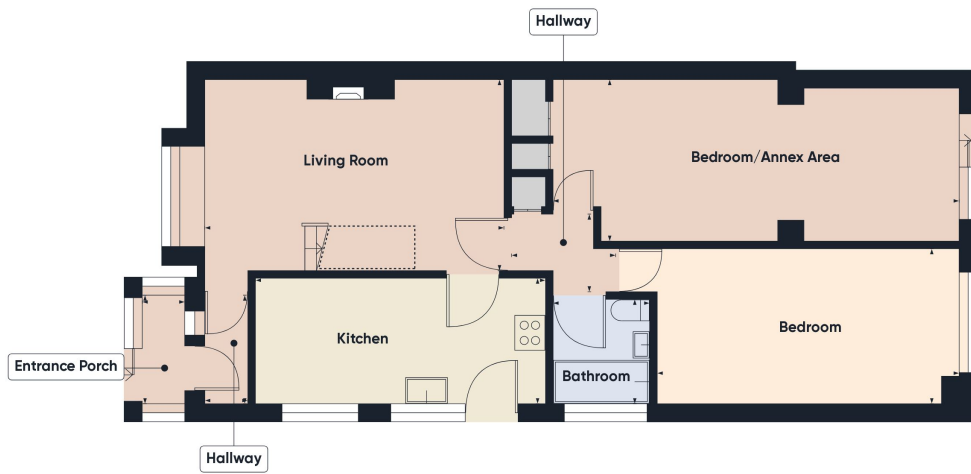
9' 5" x 23' 5" (2.87m x 7.14m)

First Floor Bedroom:

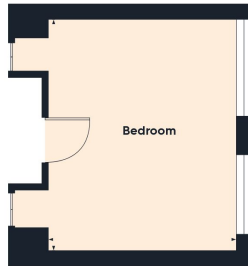
12' 9" x 15' 9" (3.89m x 4.80m)

Council Tax:

Council Tax: Band C - £1,813.92 (before any discount, if applicable)



Floor 0



Floor 1

Approximate total area⁽¹⁾
 1019.06 ft²
 94.67 m²

Reduced headroom
 13.74 ft²
 1.28 m²

(1) Excluding balconies and terraces

Reduced headroom
 (below 1.5m/4.92ft)

While every attempt has been made to ensure accuracy, all measurements are approximate, not to scale. This floor plan is for illustrative purposes only.

GIRAFFE 360