



The Green, Stotfold, Hitchin, Hertfordshire. SG5





2 Bedroom Terraced House

£1,295 pcm

Additional charges may apply

A CHARMING two-bedroom cottage overlooking The Green in Stotfold and walking distance to local amenities. This property offers spacious living throughout with a fully fitted kitchen with appliances, spacious living room, good sized double bedrooms and a four-piece bathroom suite. Available end of April! View ASAP to avoid disappointment!



- TWO bedroom cottage
- Mid terrace cottage
- Fitted kitchen with appliances
- Large living room
- Four piece bathroom suite
- Gas central heating
- Courtyard garden
- Available end of April
- No pets allowed
- EPC rating D

A CHARMING two-bedroom cottage overlooking The Green in Stotfold and walking distance to local amenities. This property offers spacious living throughout with a fully fitted kitchen with appliances, spacious living room, good sized double bedrooms and a four-piece bathroom suite. Available end of April! View ASAP to avoid disappointment!

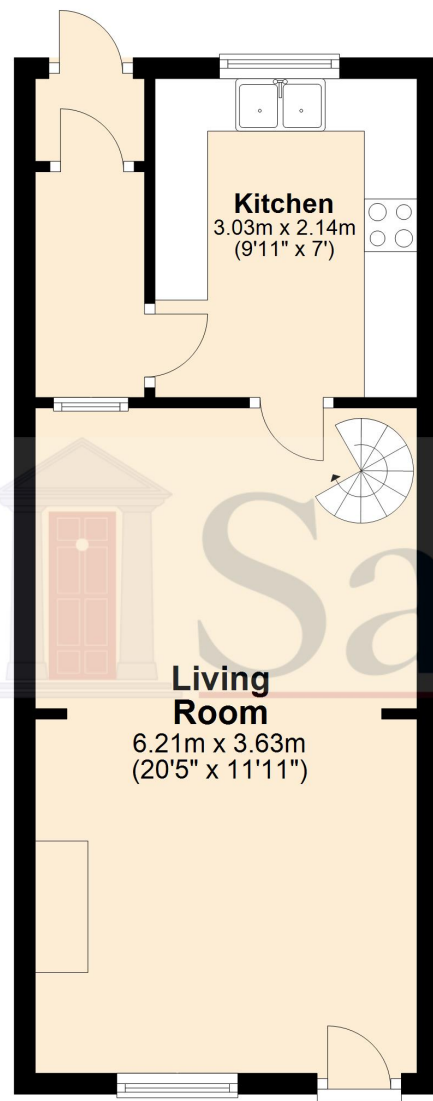
A security deposit is payable at the time of your offer being accepted by the landlord/s. This is equivalent to one weeks rent and for this property is £298.02. This does then form part of your five week holding deposit meaning once all satisfactory references are passed you will then be required to pay £1,192.10. For more information please contact the office.

Council Tax Band C

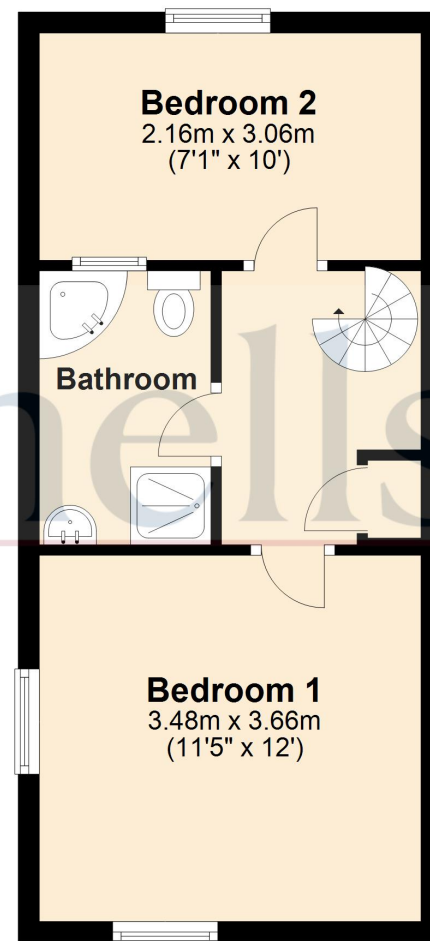


These particulars are a guide only and do not constitute an offer or a contract. The floor plan is for identification purposes only and not to scale. All measurements are approximate and should not be relied upon if ordering furniture, white goods and flooring etc. We have presented the property as we feel fairly describes it but before arranging a viewing or deciding to let, should there be anything specific you would like to know about the property please enquire. Satchells have not tested any of the appliances or carried out any form of survey and advise you to carry out your own investigations on the state, condition, structure, services, title, tenure, and council tax band of the property or the tenancy terms. Some images may have been enhanced and the contents shown may not be included in the letting. Satchells routinely refer to 3rd party services for which we receive an income from their fee. If you would like us to refer you to one of these services please ask one of our staff who will pass your details on. We advise you check the availability of the property on the day of your viewing.

Ground Floor



First Floor



For illustrative purposes only - NOT TO SCALE - Measurements shown are approximate. The size and position of doors, windows, appliances and other features are approximate.
Plan produced using PlanUp.