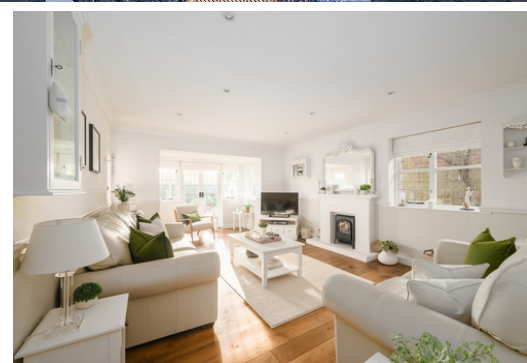


COURT



Whitby Avenue, Ingrave, Essex, CM13 3NT,
£850,000

This stunning three bedroom detached house boasts far reaching views of the open countryside. The property is in beautiful condition, showcasing tasteful décor throughout. It features a generous living room with direct access to the well-maintained landscaped garden, a formal dining room, a separate study, and a kitchen breakfast room equipped with quartz worksurfaces and built-in appliances. Additionally, there's an exquisite orangery offering panoramic views of the fields. The entrance hall includes a galleried staircase ascending to the first floor, home to three bedrooms, a family bathroom, and a master en-suite shower room. Outside, a driveway leads to a single garage, providing ample off-street parking