

3 Bedroom(s), Semi-Detached House, Freehold

Locking Drive, Armthorpe, Doncaster.



- 3D Virtual Tour Available
- Contemporary Open Plan Kitchen Diner
- Three Bedrooms
- Integral Garage
- Local Amenities, Schools and Transport Links

- Modern Semi Detached Family Home
- Ground Floor Toilet
- Family Bathroom
- Gardens to the Front and Rear with Driveway
- Security System with 2 Cameras with Motion Detection and Alarm System

£220,000
For Sale

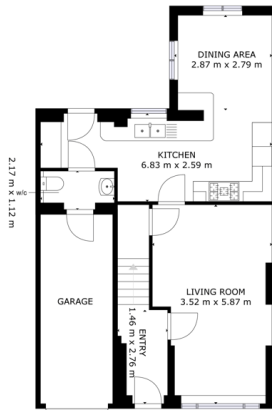
Book your viewing today Tel: 01302 247754

Owner's View

Set in a quiet and sought-after location, this stylish three-bedroom extended semi-detached home offers the perfect blend of modern living and comfortable family space. With a bright south-facing garden, open plan kitchen-diner, generous double driveway, and a host of contemporary features throughout, it's ready to move straight into and enjoy.

Ground Floor

Floor Plan



FLOOR 1



Entrance Hallway



Open Plan Kitchen Diner



Lounge

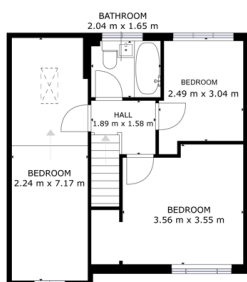


Ground Floor Toilet



First Floor

Floor Plan



FLOOR 2

GROSS INTERNAL AREA
FLOOR 1: 53 m², FLOOR 2: 47 m²
TOTAL: 100 m²

Matterport

Bedroom



Bedroom



Bedroom





Family Bathroom



External

Front Garden



Rear Garden



Property Information Form

Council Tax Band - B

Utilities - Mains Gas, Mains Electricity, Mains Water

Water Meter - Yes

Tenure - Freehold

Solar Panels - No

Space Heating System - Gas Boiler with radiators

Approximate Heating System Installation Date - 8/21/2012

Water Heating System - Gas boiler (Combi)

Approximate Water Heating Installation Date - 8/21/2012

Boiler Location - Garage

Approximate Electrical System Installation Date - 8/12/2017

Permanent Loft Ladder - Yes

Loft Insulation - Yes

Loft Boarded out - Yes

Whilst every effort is made to ensure that the information contained in these particulars is reliable, they do not constitute or form part of an offer or any contract. The Property Hive accept no liability for the accuracy of the contents, and therefore they should be independently verified by prospective buyers or tenants before agreeing an offer. All measurements provided are approximate and should be verified before exchange of contracts. No appliances, fixtures or fittings have been tested and should be checked by the buyer before exchange of contracts to ensure they are in good working order.



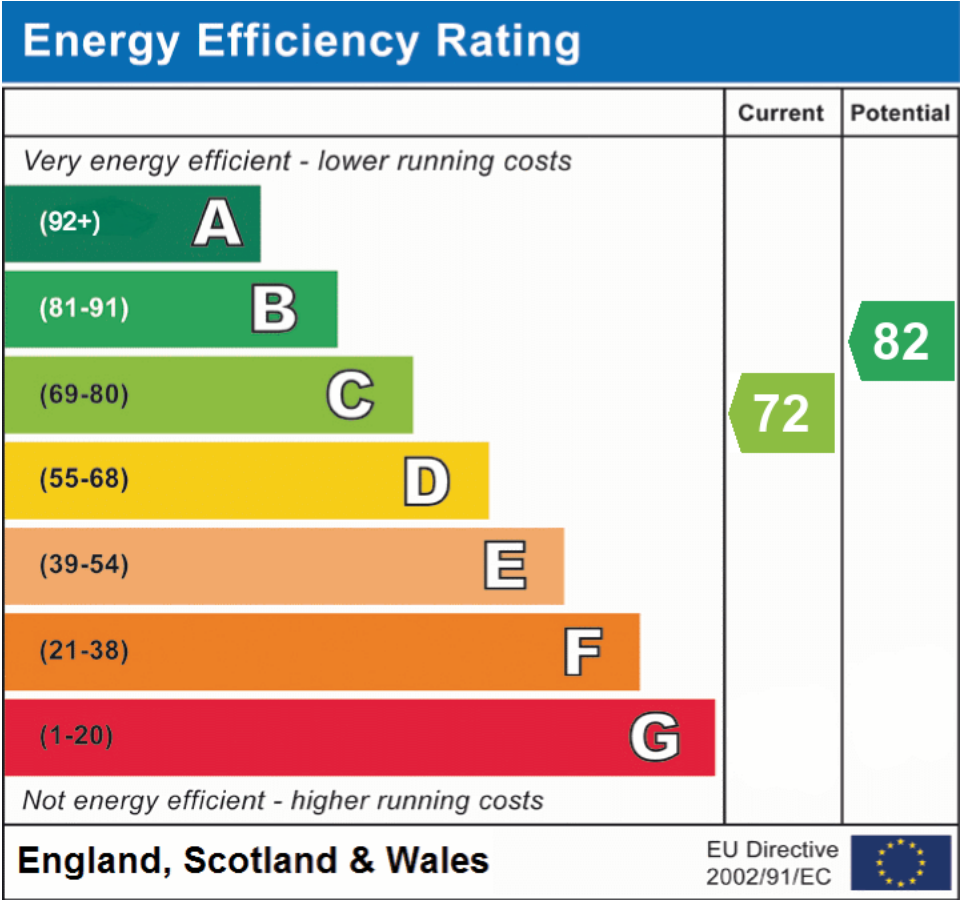
We make it happen.

Tel: 01302 247754

Email: info@thepropertyhive.co.uk

Web: www.thepropertyhive.co.uk

Energy Performance Certificate



All measurements provided are approximate and should be verified before exchange of contracts. No appliances have been tested and should be checked to ensure they are in good working order.