

Prestbury Drive

Warminster, BA12 9LF

COOPER
AND
TANNER



£325,000 Freehold

🚗 3 🛋️ 1 🚿 2 EPC D

Description

Cooper and Tanner are pleased to offer this immaculate and spacious three bedroom semi detached home that is located on a very popular estate that lies on the Salisbury side of the town. The home has had many improvements carried out by the present owner including new flooring and a lovely re fitted kitchen suite. The accommodation comprised an entrance porch, hall, lounge with shelving and electric Dimplex Opti-myst stove, upgraded kitchen and dining area, three bedrooms, bathroom and en suite shower. Outside a drive provides parking and access to the single garage. Established front and rear gardens. Viewing advised.

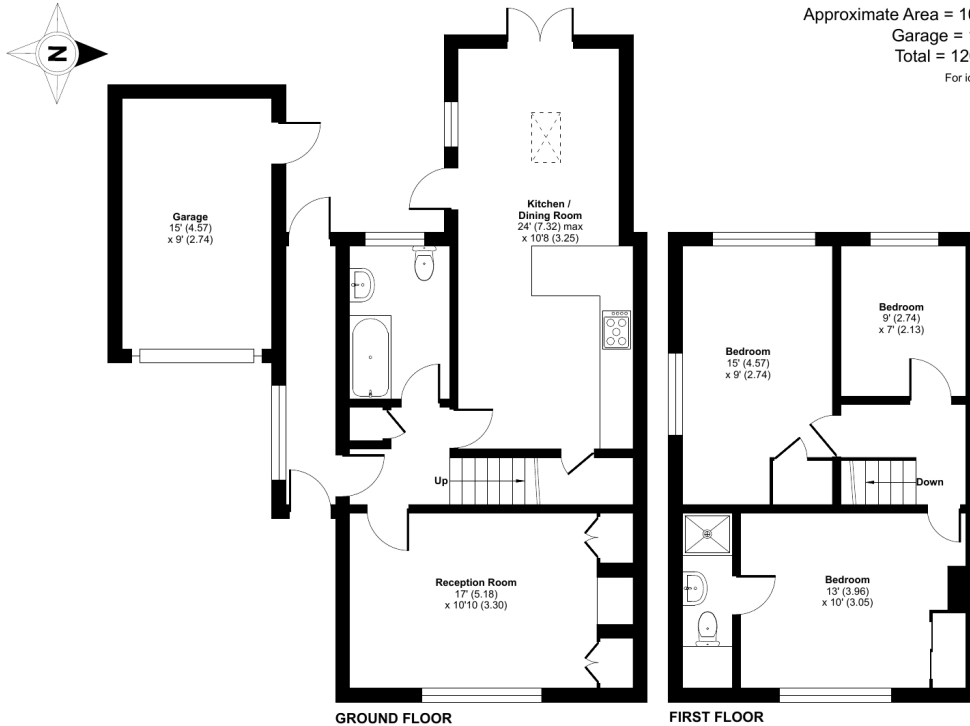
Prestbury Drive, Warminster, BA12

Approximate Area = 1074 sq ft / 99.7 sq m

Garage = 135 sq ft / 12.5 sq m

Total = 1209 sq ft / 112.2 sq m

For identification only - Not to scale



Floor plan produced in accordance with RICS Property Measurement Standards incorporating International Property Measurement Standards (IPMS2 Residential). © richcom 2024. Produced for Cooper and Tanner. REF: 1122631



Features

- Upgraded home
- Recently refitted kitchen
- Double glazing
- Gas central heating
- Pleasing and tasteful presentation
- Ample parking
- Single garage
- Close to local shop
- Close to walks
- En-suite Shower to Master Bedroom

Local Information

- Council Tax Band C
- Tenure Freehold
- EPC Rating D

WARMINSTER OFFICE

Telephone 01985 215579

48-50, Market Place, Warminster, Wiltshire BA12 9AN

warminster@cooperandtanner.co.uk

**COOPER
AND
TANNER**

Important Notice: These particulars are set out as a general outline only for the guidance of intended purchasers and do not constitute, nor constitute part of, an offer or contract. All descriptions, dimensions, reference to condition and necessary permissions for use and occupation, warranties and other details are given without responsibility and any intending purchasers should not rely on the m as statements or representations of fact but must satisfy themselves by inspection or otherwise as to the correctness of each of them.

