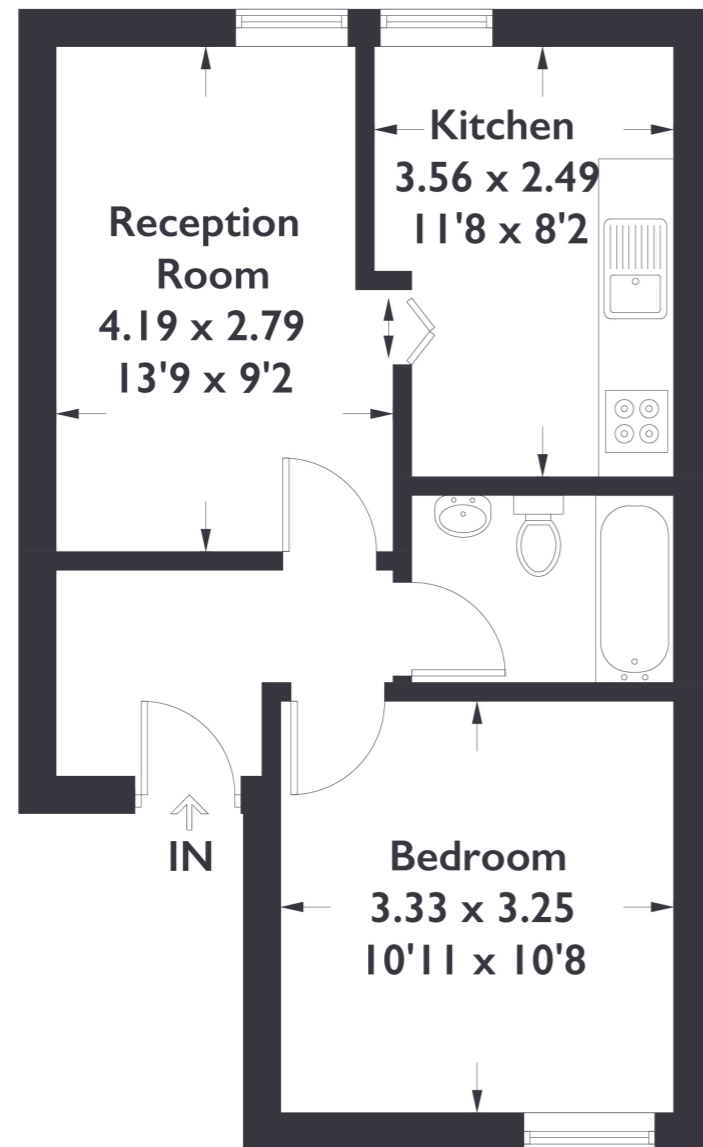


Heath Road, TW1

Approximate Gross Internal Area = 38.8 sq m / 418 sq ft



Second Floor

Measured in accordance with RICS Code of Measuring Practice. To be used for identification and guidance purposes only. Whilst every care is taken in the preparation of this plan, please check all dimensions, shapes and compass bearings before making any decisions reliant upon them. www.london58.com © 2024 hello@london58.com



1 BEDROOM FLAT

Heath Road, TW1

£340,000

****CHAIN FREE****

Discover the perfect blend of comfort and convenience with this charming one bedroom, one bathroom flat in Twickenham. This thoughtfully designed space boasts a nice sized layout, flooded with natural light that accentuates its inviting ambiance.

FEATURES

- Share of Freehold
- One Bedroom
- One Bathroom
- Separate Reception Room
- Close To Local Amenities
- Twickenham Station
- EPC Rating TBC



1 BEDROOM FLAT

Heath Road, TW1

This recently refurbished flat offers the exciting opportunity to make it your own. Meticulously looked after, the flat offers a well maintained and cosy atmosphere, ensuring a comfortable living experience.

Enjoy the ease of access to nearby shops, restaurants, and other conveniences, making everyday living a breeze. With the added advantage of proximity to Twickenham train station, commuting becomes effortlessly convenient.

Experience the best of both worlds a well kept, luminous living space nestled in a prime location with easy access to amenities and transportation. This one-bed, one-bath flat is an ideal retreat for those seeking a harmonious blend of comfort and accessibility in the heart of Twickenham.

EPC rating TBC

