



TO
CENTRAL

DARGLOBAL

One stop away from the centre of the world's greatest metropolis, London



The information in this document is indicative and is intended to act as a guide only as to the finished product. Accordingly, the finished product may vary from the information provided. These particulars should not be relied upon as statements of fact or representations and

applicants must satisfy themselves by inspection or otherwise as to their correctness. This information does not constitute a contract or warranty. All computer generated images and lifestyle photography are indicative only.

Your gateway to
unforgettable experiences





Where Hollywood magic
meets neighborhood charm.



Minutes away
from unrivaled
pleasure



This is

8 TO CENTRAL





8 TO CENTRAL

Located just 8 minutes from central London, 8min-to-Central provides a refined gateway to the world's greatest capital.

Say goodbye to long commutes and hello to a life filled with convenience and possibilities.



Discover an exclusive oasis in the heart of Ealing, West London.

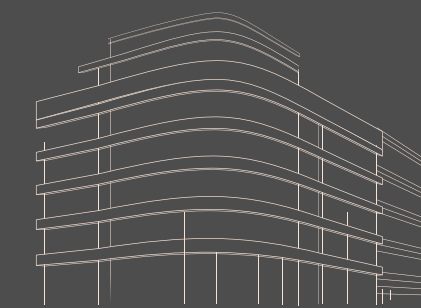
Nestled in the highly sought-after area of Ealing Broadway, this prestigious property offers the perfect blend of quaint urban living and proximity to central London. Immerse yourself in a vibrant community, rich cultural heritage, and exceptional amenities, all minutes from your doorstep.





The capital is your playground

ONLY 8 MINUTES TO CENTRAL LONDON



8min-to-Central

2 MIN



Ealing
Broadway

6 MIN



London
Paddington



LOCATION

TRANSPORTATION

- 1 Ealing Broadway Station
- 2 Ealing Common Station

FITNESS

- 3 Gymbox
- 4 F45 Training

RESTAURANTS & ENTERTAINMENT

- 5 Cote
- 6 Galicja Restaurant
- 7 Hare & Tortoise
- 8 Steak on the Green Steakhouse
- 9 Ealing Broadway shopping centre

CULTURE

- 10 Ealing Studios
- 11 Ealing Farmer's Market
- 12 Pitzhanger Gallery
- 13 Questors Theatre

GREEN SPACES

- 14 Ealing Common
- 15 Walpole Park

SCHOOLS

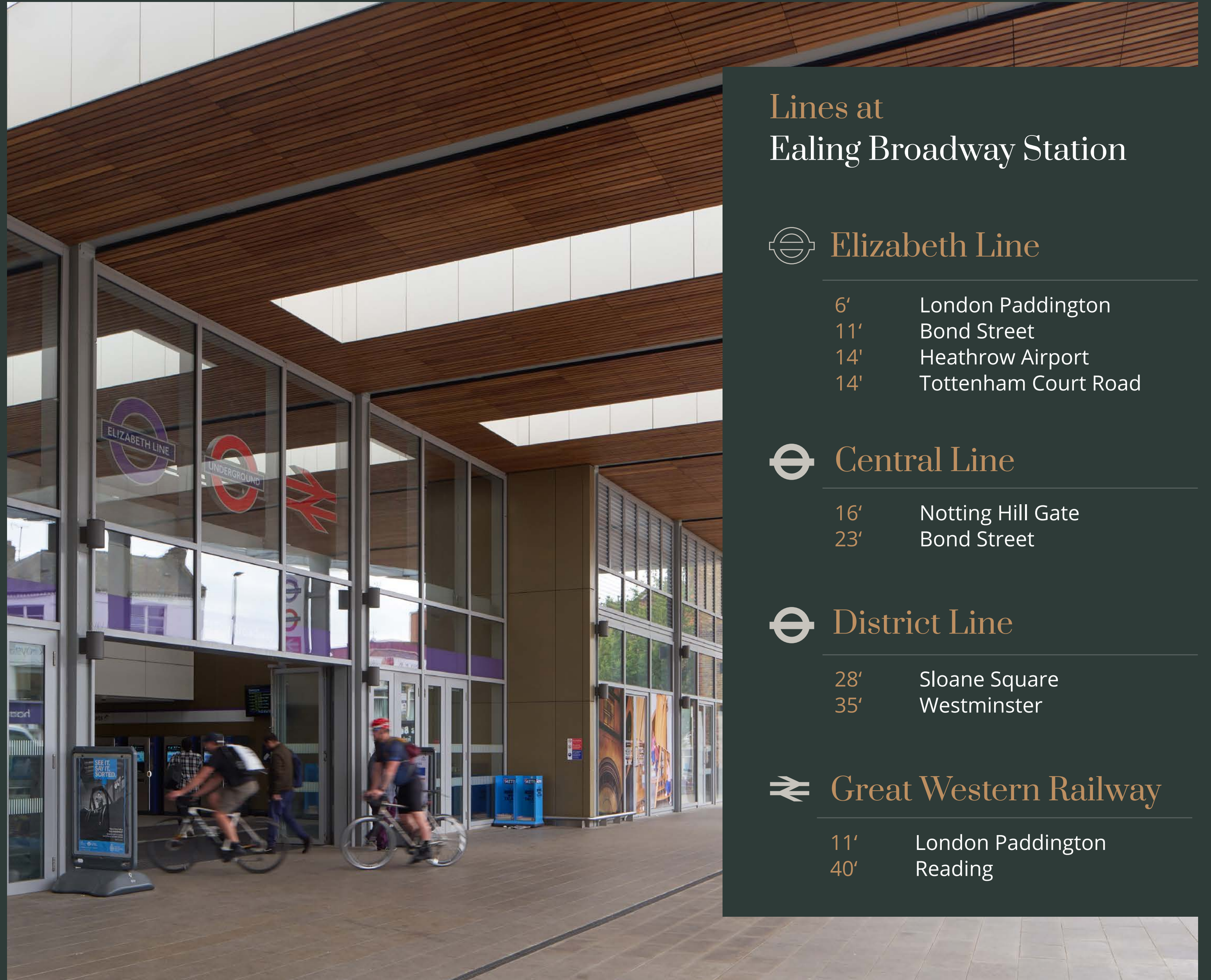
- 16 Notting Hill & Ealing High School
- 17 St Benedict's School
- 18 St Augustine's Priory
- 19 Montpelier Primary School

LOCATION

Location,
Location, Location!

This luxury property enjoys the benefits of Ealing's contemporary countryside atmosphere while being just a stone's throw away from central London.

With Ealing Broadway Station only a 2-minute walk away, you can effortlessly access the heart of the city in just 8 minutes via the newly opened Elizabeth line. You also have close links to the M4 (motorway access) and excellent transport options if commuting further into the city.



Lines at
Ealing Broadway Station

 Elizabeth Line

- 6' London Paddington
- 11' Bond Street
- 14' Heathrow Airport
- 14' Tottenham Court Road

 Central Line

- 16' Notting Hill Gate
- 23' Bond Street

 District Line

- 28' Sloane Square
- 35' Westminster

 Great Western Railway

- 11' London Paddington
- 40' Reading

Life at 8min-to-Central is designed to fulfill your every day needs

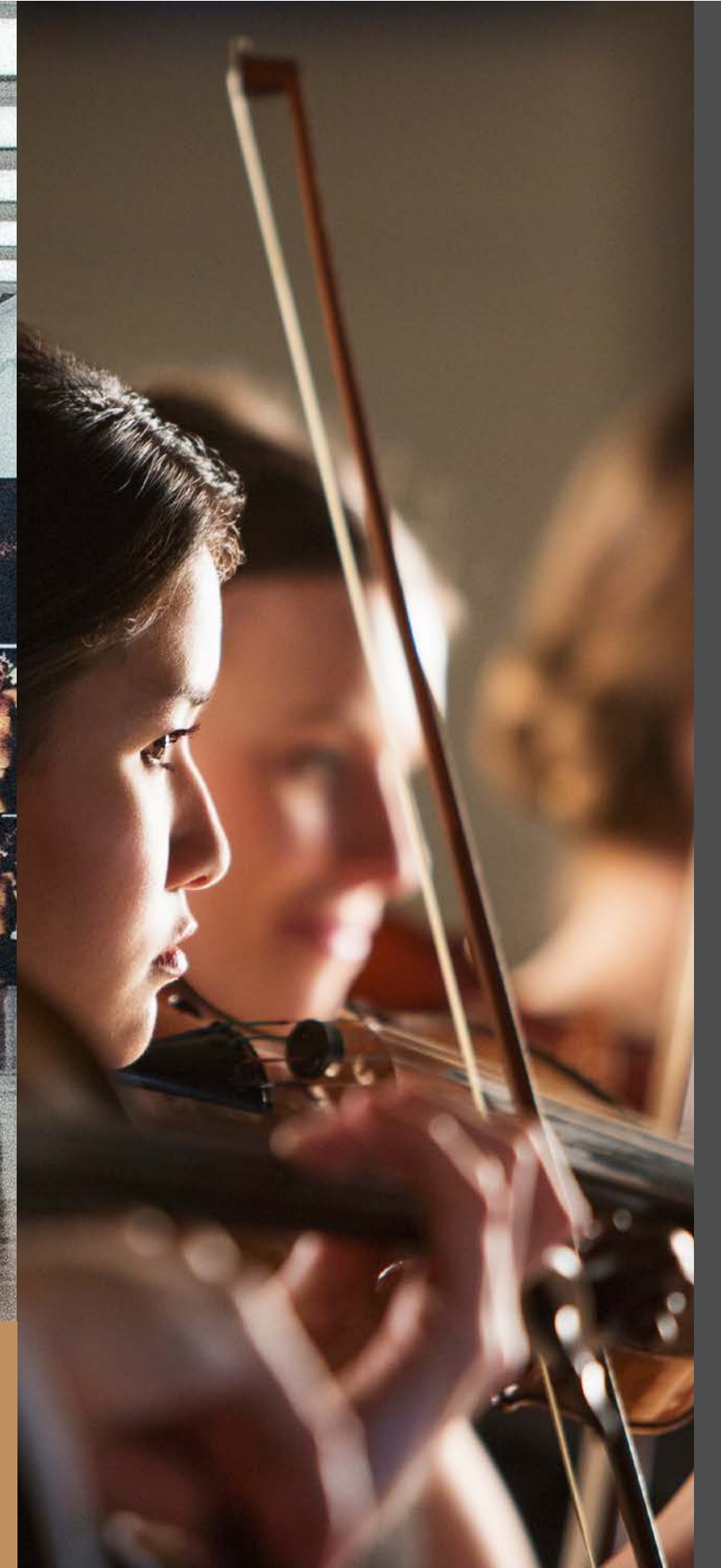


Enjoy Ealing's finest amenities and experiences right at your doorstep



Explore pulsating cultural scenes

Ealing is home to various cultural establishments, such as theaters, galleries, and music venues, that exhibit top-notch arts and entertainment.



Home to iconic Ealing Studios, where Hollywood's biggest films are made.

Ealing is perhaps best known for Ealing Studios, the world's oldest film studios, that still makes some of the biggest Hollywood films. Ealing's astonishing greenery and traditional architecture were ingeniously captured in many of the scenes in the movies. While it's not unusual to bump into a film star in Ealing.



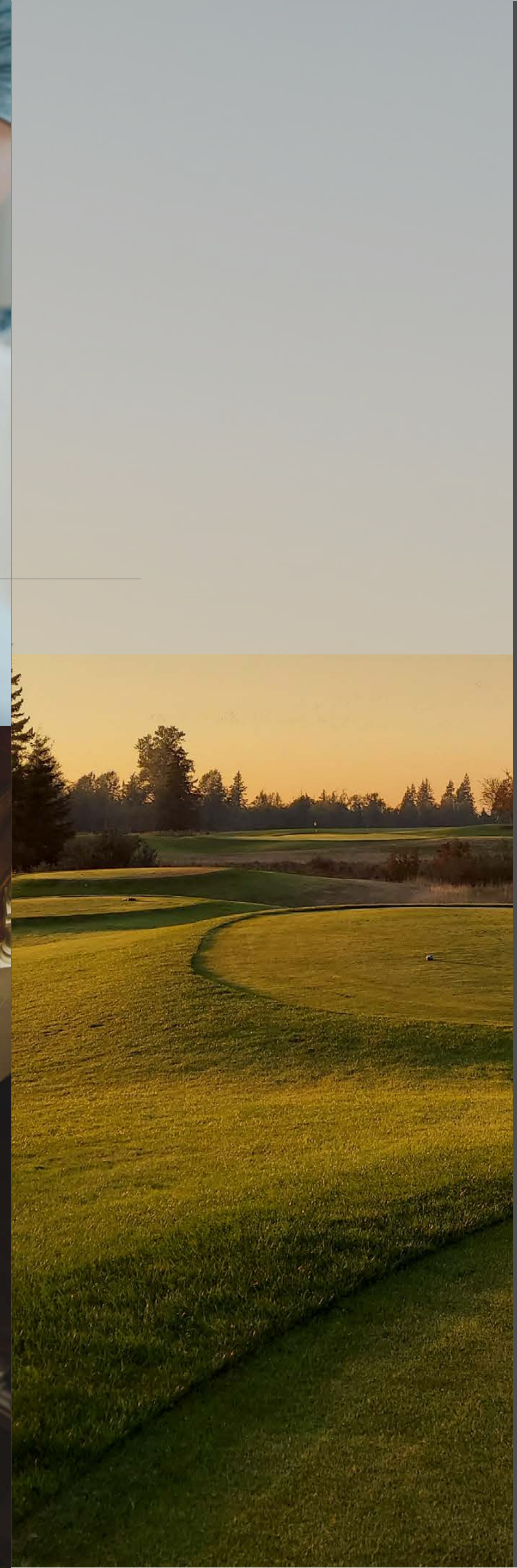
Discover a range of world-class dining options

Ealing's dining scene boasts everything from Michelin-starred establishments to trendy eateries, offering a culinary adventure that rivals any vibrant metropolis.



Explore exceptional locales

Indulge in your preferred lifestyle with effortless access to a plethora of amenities: from shopping havens and opulent spas to top-notch golf courses and exclusive clubs. It's all within your grasp.



A haven of education and safety. London's Top 20 safest.

Ealing excels in education and healthcare, offering top-notch schools that provide exceptional learning opportunities and renowned medical centers that offer world-class healthcare services.

Moreover, its commitment to safety has earned Ealing a well-deserved reputation, as it ranks among the top 20 safest boroughs in London.





Refined residences designed for the discerning few

This exclusive development offers 9 meticulously designed units of 1, 2 and 3 bedrooms, each thoughtfully crafted to provide a haven of elegance and comfort.

From spacious living areas to designer finishes, every detail has been carefully considered to create a truly exceptional living experience. Experience the finest in contemporary living, tailored to the discerning few.



Exquisite interiors.
Modern living.







The apartment finishes and materials used in these thoughtfully designed spaces are truly exceptional. One of the standout features is the underfloor heating system, which permeates every corner, providing a cozy and inviting atmosphere.

As you step inside, you'll be greeted by the beautifully crafted oak flooring to exude elegance and sophistication. Its rich tones and smooth texture add a touch of timeless beauty, creating a warm and inviting ambiance throughout the space.

Step inside the
apartments at
8min-to-Central
and experience
a world of refined
elegance.





The bespoke joinery of the kitchen in a walnut finish adds a touch of elegance and sophistication, while the hand-selected Italian stone worktops enhance both functionality and aesthetics. The kitchen comes equipped with top-of-the-line appliances ensuring quality and convenience for all your culinary endeavors.







A DEVELOPMENT BY

DARGLOBAL



MOUNTBATTEN
HOMES

Endless possibilities for work and play

With central London just minutes away, 8min-to-Central offers unparalleled opportunities for both work and play.

Whether you're a business professional seeking proximity to the city's financial and commercial districts or a lover of the arts and culture looking to immerse yourself in renowned museums, this location puts you in the center of it all.

Make 8min-to-Central your home.
darglobal.co.uk/8mintocentral

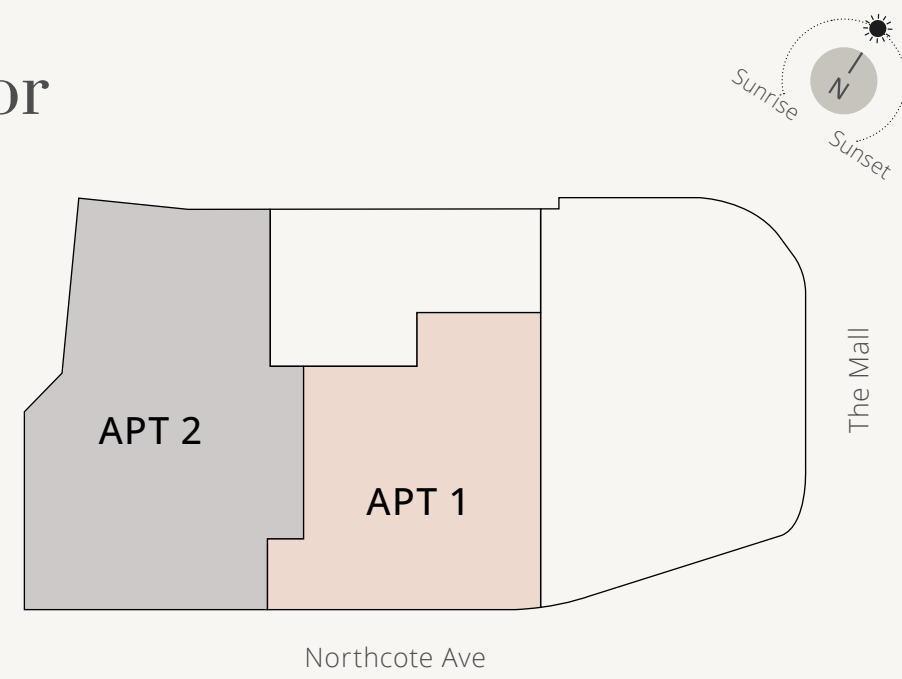




Floor Plans

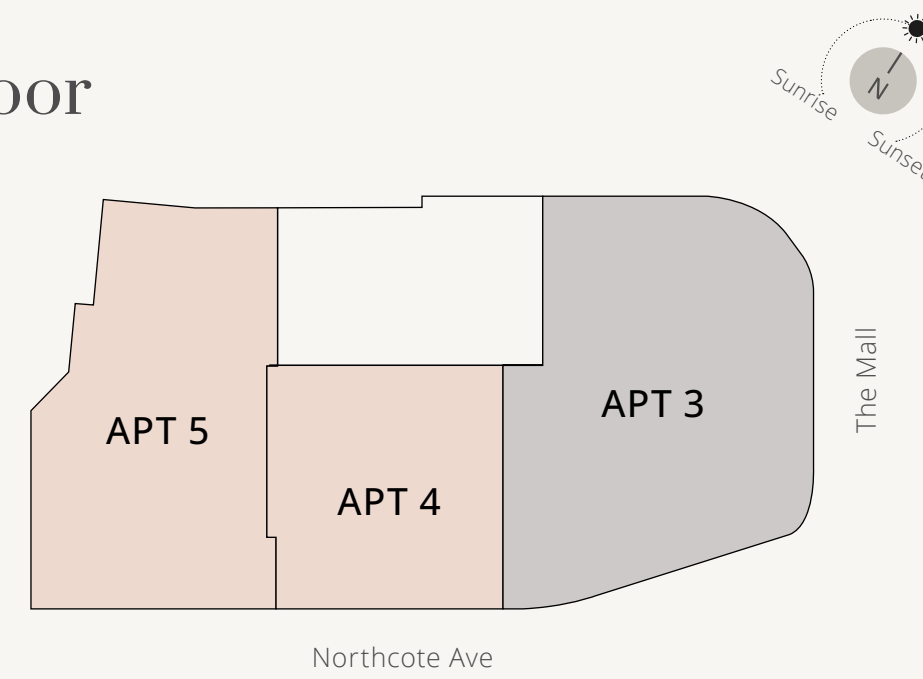
Disclaimer: All pictures, plans, layouts, information, data and details included in this brochure are indicative only and may change at any time up to the final 'as built' status in accordance with final designs of the project, regulatory approvals and planning permissions. All accessories and interior finishes such as wallpaper, chandeliers, furniture, electronics, white goods, curtains, hard and soft landscaping, pavements, features, gym, swimming pool(s) and other elements displayed in the brochure, or between the plot boundary and the unit, are not part of the unit and are shown for illustrative purposes only.

1st Floor



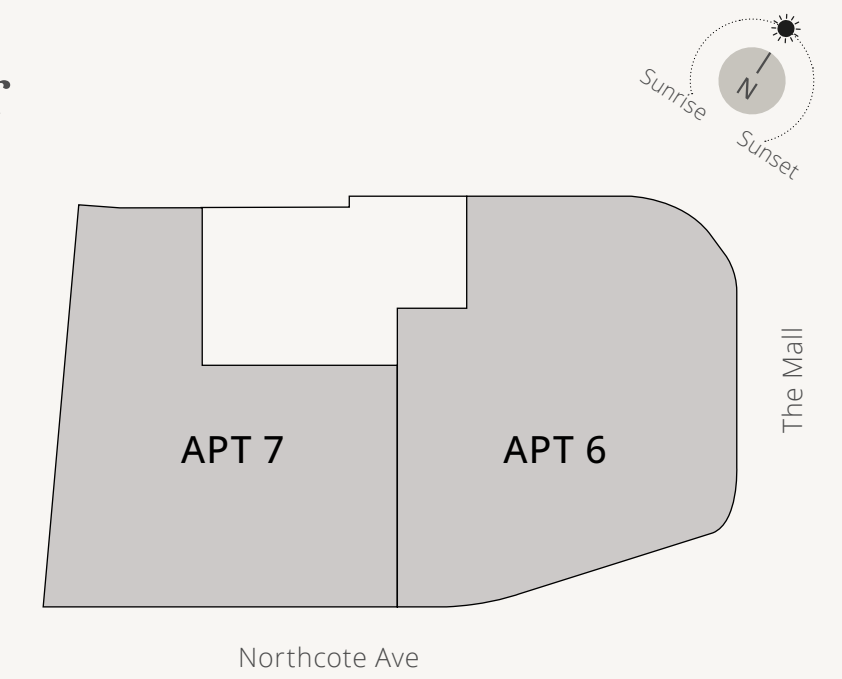
Apt no	Bedrooms	Gross Internal Area
1	1	538 sq ft / 50 sq m
2	2	774 sq ft / 71.9 sq m

2nd Floor



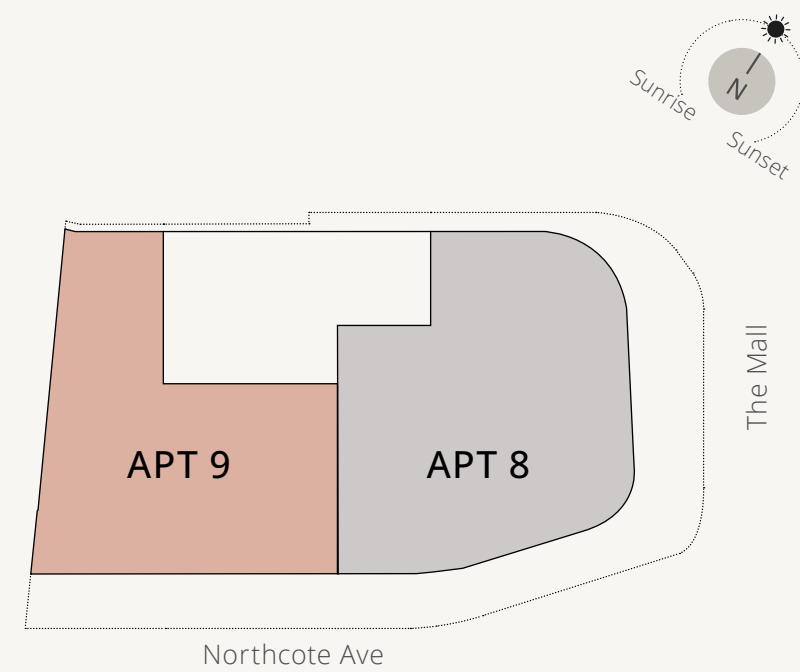
Apt no	Bedrooms	Gross Internal Area
3	2	864 sq ft / 80.27 sq m
4	1	466 sq ft / 43.37 sq m
5	1	497 sq ft / 46.2 sq m

3rd Floor



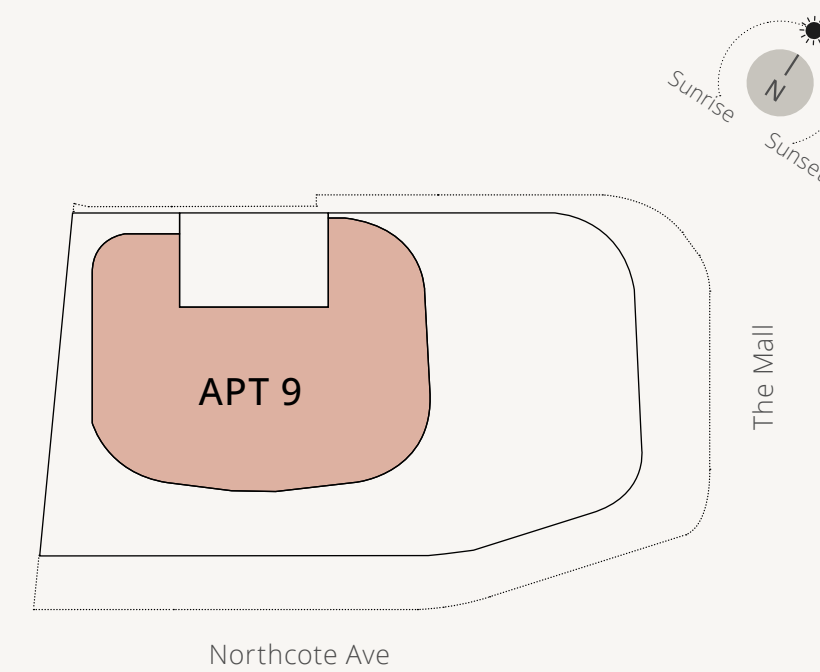
Apt no	Bedrooms	Gross Internal Area
6	2	947 sq ft / 88.02 sq m
7	2	847 sq ft / 78.7 sq m

4th Floor



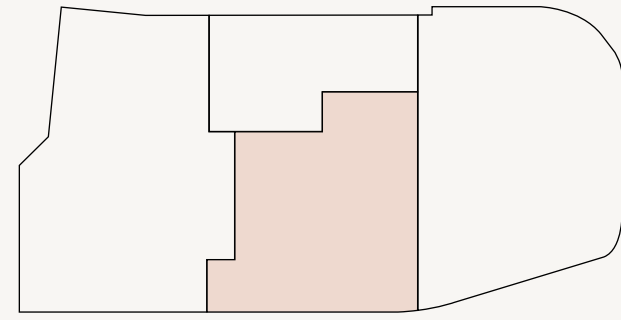
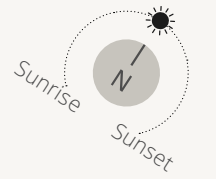
Apt no	Bedrooms	Gross Internal Area
8	2	754 sq ft / 70 sq m
9	3 Duplex	1,293 sq ft / 120.18 sq m

5th Floor



- 1 Bedroom
- 2 Bedrooms
- 3 Bedrooms Duplex

Disclaimer: All pictures, plans, layouts, information, data and details included in this brochure are indicative only and may change at any time up to the final 'as built' status in accordance with final designs of the project, regulatory approvals and planning permissions. All accessories and interior finishes such as wallpaper, chandeliers, furniture, electronics, white goods, curtains, hard and soft landscaping, pavements, features, gym, swimming pool(s) and other elements displayed in the brochure, or within the show apartment or between the plot boundary and the unit, are not part of the unit and are shown for illustrative purposes only.



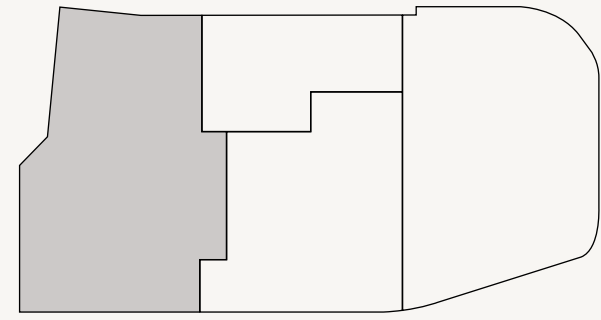
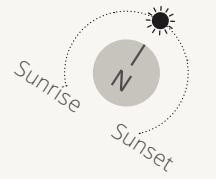
Apt no. 1

1st Floor

1-Bedroom

538 sq ft / 50 sq m

Disclaimer: All pictures, plans, layouts, information, data and details included in this brochure are indicative only and may change at any time up to the final 'as built' status in accordance with final designs of the project, regulatory approvals and planning permissions. All accessories and interior finishes such as wallpaper, chandeliers, furniture, electronics, white goods, curtains, hard and soft landscaping, pavements, features, gym, swimming pool(s) and other elements displayed in the brochure, or within the show apartment or between the plot boundary and the unit, are not part of the unit and are shown for illustrative purposes only.



Apt no. 2

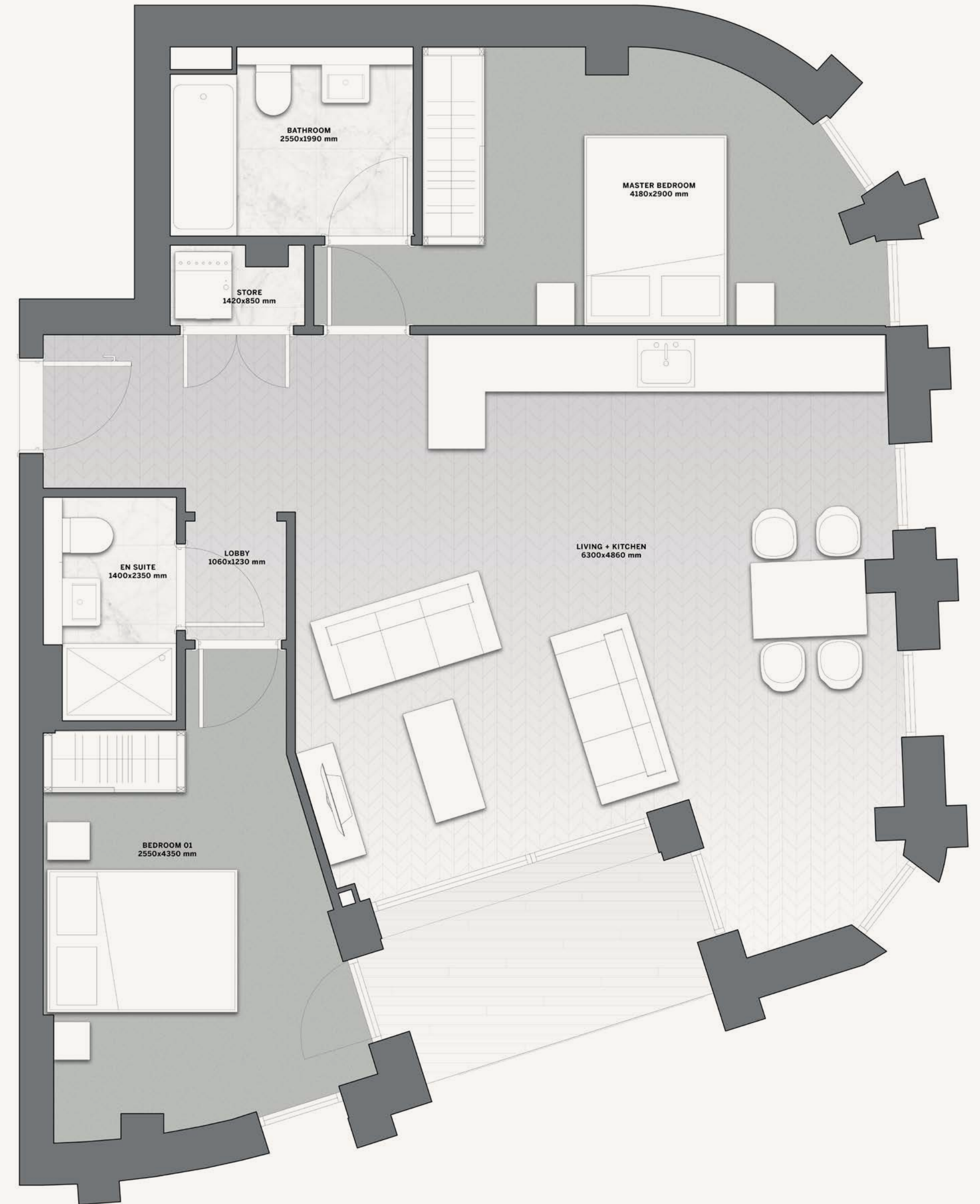
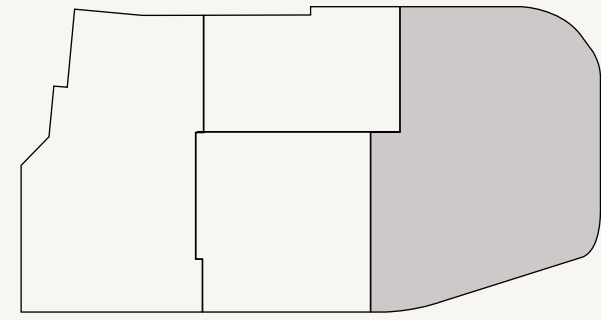
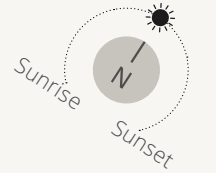
1st Floor

2-Bedrooms

774 sq ft / 71.9 sq m

Disclaimer: All pictures, plans, layouts, information, data and details included in this brochure are indicative only and may change at any time up to the final 'as built' status in accordance with final designs of the project, regulatory approvals and planning permissions. All accessories and interior finishes such as wallpaper, chandeliers, furniture, electronics, white goods, curtains, hard and soft landscaping, pavements, features, gym, swimming pool(s) and other elements displayed in the brochure, or within the show apartment or between the plot boundary and the unit, are not part of the unit and are shown for illustrative purposes only.





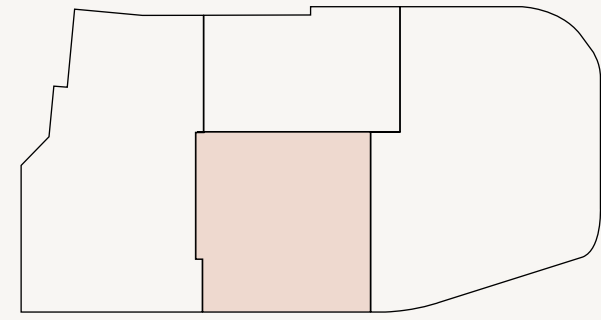
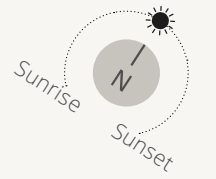
Apt no. 3

2nd Floor

2-Bedrooms

864 sq ft / 80.27 sq m

Disclaimer: All pictures, plans, layouts, information, data and details included in this brochure are indicative only and may change at any time up to the final 'as built' status in accordance with final designs of the project, regulatory approvals and planning permissions. All accessories and interior finishes such as wallpaper, chandeliers, furniture, electronics, white goods, curtains, hard and soft landscaping, pavements, features, gym, swimming pool(s) and other elements displayed in the brochure, or within the show apartment or between the plot boundary and the unit, are not part of the unit and are shown for illustrative purposes only.



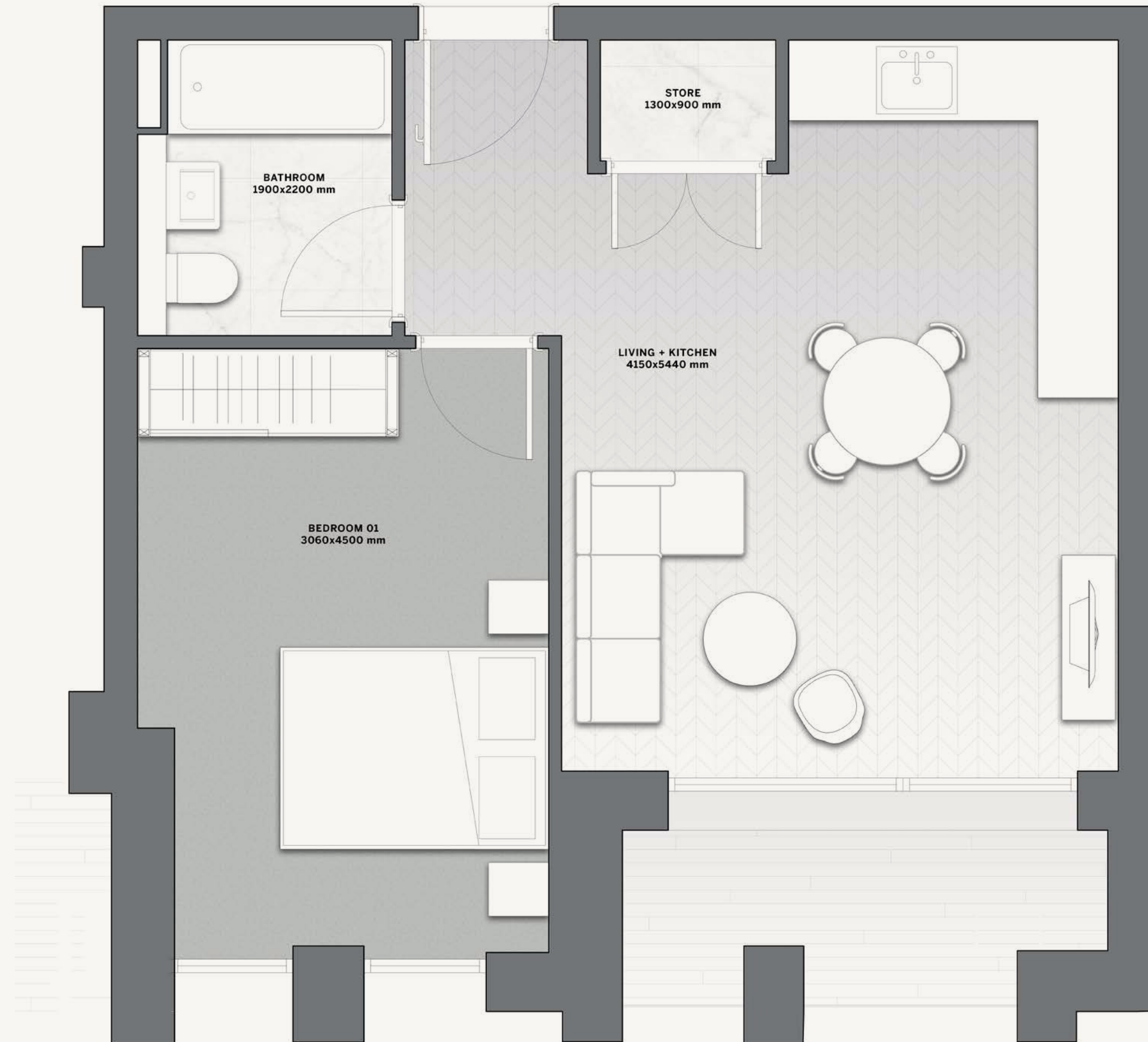
Apt no. 4

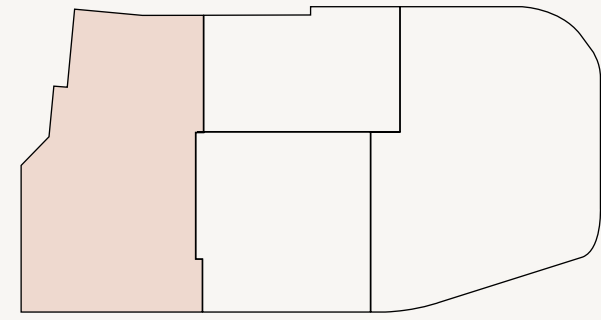
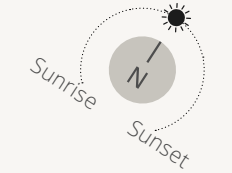
2nd Floor

1-Bedroom

466 sq ft / 43.37 sq m

Disclaimer: All pictures, plans, layouts, information, data and details included in this brochure are indicative only and may change at any time up to the final 'as built' status in accordance with final designs of the project, regulatory approvals and planning permissions. All accessories and interior finishes such as wallpaper, chandeliers, furniture, electronics, white goods, curtains, hard and soft landscaping, pavements, features, gym, swimming pool(s) and other elements displayed in the brochure, or within the show apartment or between the plot boundary and the unit, are not part of the unit and are shown for illustrative purposes only.





Apt no. 5

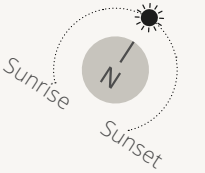
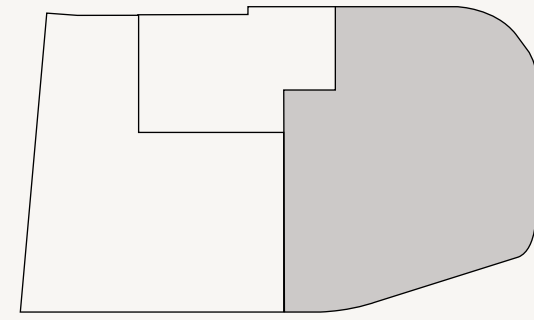
2nd Floor

1-Bedroom

497 sq ft / 46.2 sq m

Disclaimer: All pictures, plans, layouts, information, data and details included in this brochure are indicative only and may change at any time up to the final 'as built' status in accordance with final designs of the project, regulatory approvals and planning permissions. All accessories and interior finishes such as wallpaper, chandeliers, furniture, electronics, white goods, curtains, hard and soft landscaping, pavements, features, gym, swimming pool(s) and other elements displayed in the brochure, or within the show apartment or between the plot boundary and the unit, are not part of the unit and are shown for illustrative purposes only.





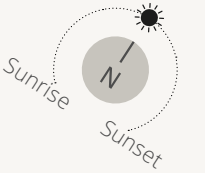
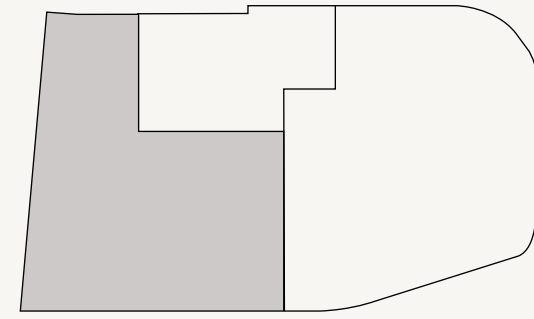
Apt no. 6

3rd Floor

2-Bedrooms

947 sq ft / 88.02 sq m

Disclaimer: All pictures, plans, layouts, information, data and details included in this brochure are indicative only and may change at any time up to the final 'as built' status in accordance with final designs of the project, regulatory approvals and planning permissions. All accessories and interior finishes such as wallpaper, chandeliers, furniture, electronics, white goods, curtains, hard and soft landscaping, pavements, features, gym, swimming pool(s) and other elements displayed in the brochure, or within the show apartment or between the plot boundary and the unit, are not part of the unit and are shown for illustrative purposes only.



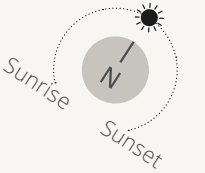
Apt no. 7

3rd Floor

2-Bedrooms

847 sq ft / 78.7 sq m

Disclaimer: All pictures, plans, layouts, information, data and details included in this brochure are indicative only and may change at any time up to the final 'as built' status in accordance with final designs of the project, regulatory approvals and planning permissions. All accessories and interior finishes such as wallpaper, chandeliers, furniture, electronics, white goods, curtains, hard and soft landscaping, pavements, features, gym, swimming pool(s) and other elements displayed in the brochure, or within the show apartment or between the plot boundary and the unit, are not part of the unit and are shown for illustrative purposes only.



Apt no. 8

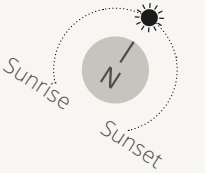
4th Floor

2-Bedrooms

754 sq ft / 70 sq m

Disclaimer: All pictures, plans, layouts, information, data and details included in this brochure are indicative only and may change at any time up to the final 'as built' status in accordance with final designs of the project, regulatory approvals and planning permissions. All accessories and interior finishes such as wallpaper, chandeliers, furniture, electronics, white goods, curtains, hard and soft landscaping, pavements, features, gym, swimming pool(s) and other elements displayed in the brochure, or within the show apartment or between the plot boundary and the unit, are not part of the unit and are shown for illustrative purposes only.





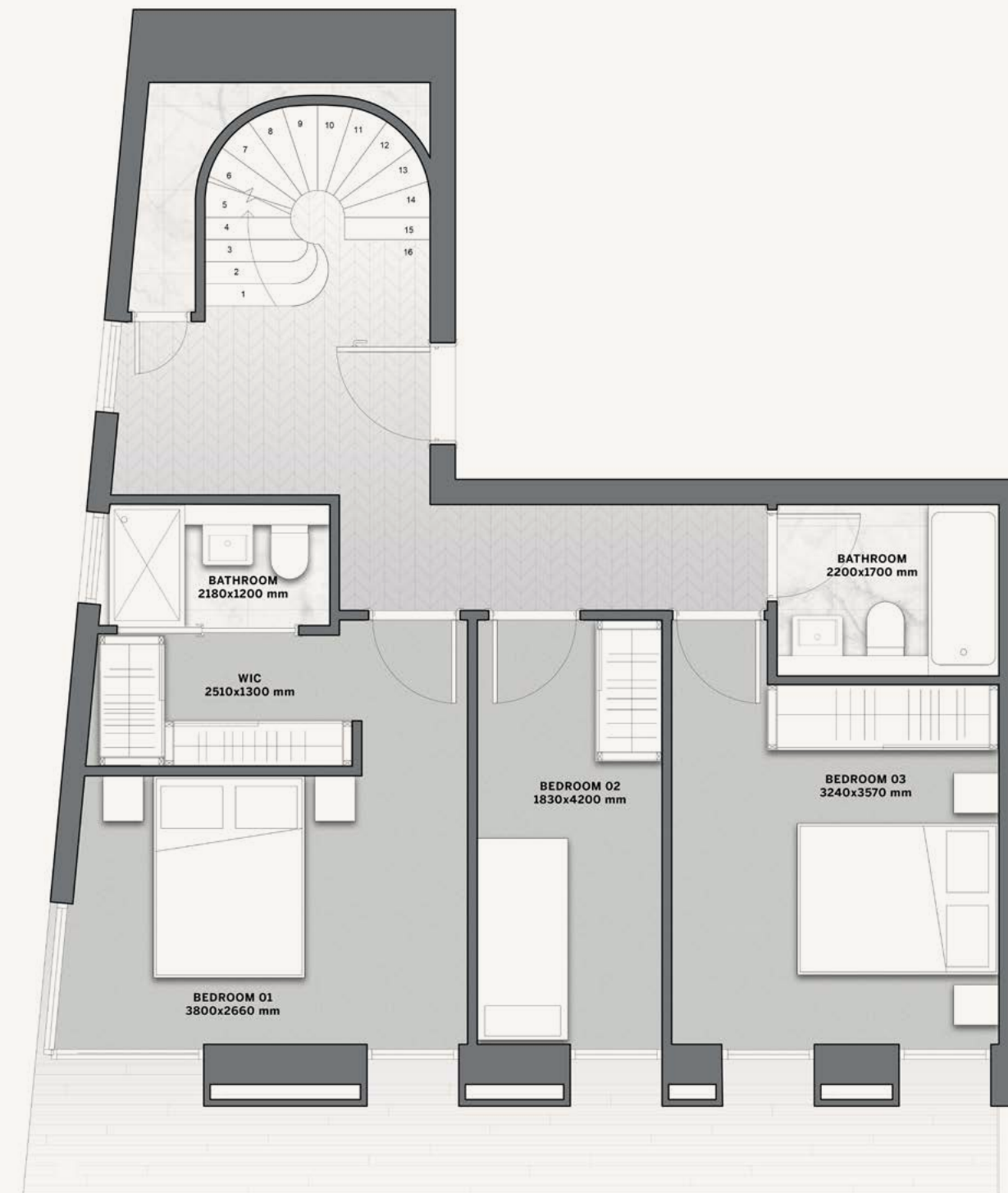
Apt no. 9

4-5 Floors

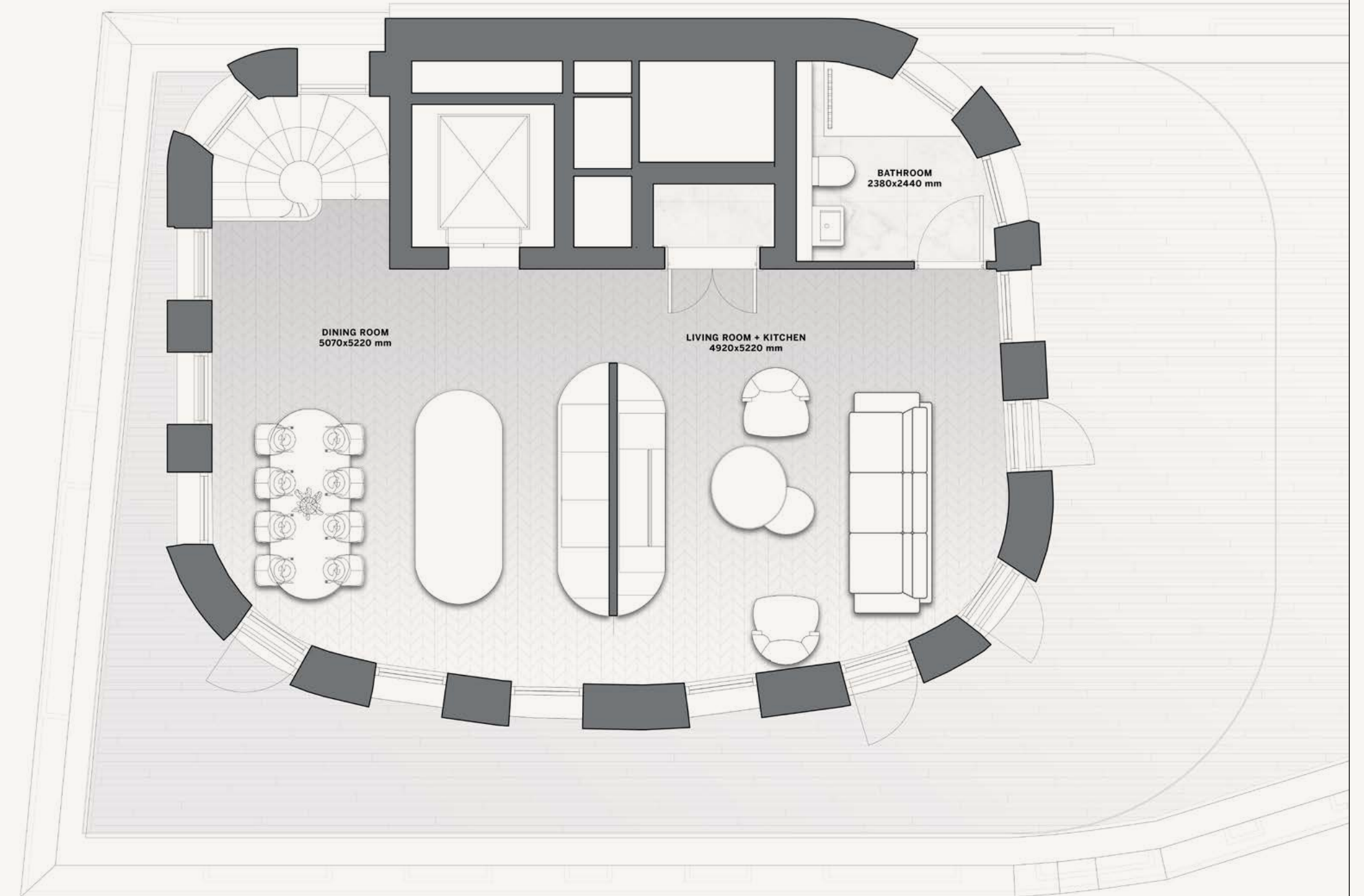
3-Bedrooms Duplex

1,293 sq ft / 120.18 sq m

Disclaimer: All pictures, plans, layouts, information, data and details included in this brochure are indicative only and may change at any time up to the final 'as built' status in accordance with final designs of the project, regulatory approvals and planning permissions. All accessories and interior finishes such as wallpaper, chandeliers, furniture, electronics, white goods, curtains, hard and soft landscaping, pavements, features, gym, swimming pool(s) and other elements displayed in the brochure, or within the show apartment or between the plot boundary and the unit, are not part of the unit and are shown for illustrative purposes only.



4th FLOOR



5th FLOOR

A DEVELOPMENT BY

DARGLOBAL



MOUNTBATTEN
HOMES

DARGLOBAL

Listed on the London Stock Exchange

Established in 2017 to upend the global luxury real estate market, DarGlobal combines experience and innovation to deliver the highest quality properties. World-class architects curate DarGlobal's homes that are modelled by renowned design icons; each DarGlobal home is built with the highest quality materials and maintained by experts within the field.

DarGlobal believes there is no better investment than an investment in luxury and takes pride in choosing the best-in-class locations and properties to provide lucrative investment opportunities for a distinct clientele.

Building on the legacy
of the largest real estate
company in the region.

—
9
offices in different
cities worldwide

—
29
years of
experience

—
15,300+
residential units
delivered

—
8.6 Bn
USD in assets

—
500,000 sqm
of commercial space

DARGLOBAL

LONDON, UK

50 Hans Crescent,
Knightsbridge, London,
SW1X 0NA, United Kingdom
T +44 7875 495156

BEIJING, CHINA

303-309, North Tower,
Beijing Kerry Centre,
No.1 Guanghai Road,
Chaoyang District, Beijing
T +86 132 5888 6222

DUBAI, UAE

Jumeirah Emirates Towers
30th Floor, Sheikh Zayed Road.
PO Box 2523, Dubai,
United Arab Emirates
T +971 4 247 8999

DOHA, QATAR

Malibu Building,
Lusail Entertainment City,
Doha, Qatar
T +974 800 3536

MARBELLA, SPAIN

Marbella Club Golden Mile, Av.
Bulevar Príncipe Alfonso
de Hohenlohe, Marbella 29602,
Málaga, Spain
T +34 952 68 76 80

MUSCAT, OMAN

Royal Opera House Muscat
Shatti Al Qurum, Muscat,
Sultanate of Oman
T +968 2270 2777

For more information on 8min-to-Central
please call [+44 7875 495156 \(UK\)](tel:+447875495156)

You can visit our website at darglobal.co.uk/8mintocentral
or via our social media platforms



DARGLOBAL

DARGLOBAL.CO.UK

The information in this document is indicative and is intended to act as a guide only as to the finished product. Accordingly, the finished product may vary from the information provided. These particulars should not be relied upon as statements of fact or representations and applicants must satisfy themselves by inspection or otherwise as to their correctness. This information does not constitute a contract or warranty. All computer generated images and lifestyle photography are indicative only.