



- One Bedroom Apartment
- Beautifully Presented Throughout
- Complete Onward Chain
- Stylish Open-Plan Living Accommodation
- Easy Access To Chelmsford City Centre
- Bespoke Fitted Wardrobes
- 245 Years Remaining On Lease
- Well Maintained Communal Gardens
- Short Walk To The Hospital
- UPVC Windows & Gas Central Heating

## 59 Searle Crescent, Broomfield, Chelmsford, Essex. CM1 7FN.

Michaels Property Consultants are delighted to bring to the market this beautifully presented and deceptively spacious one bedroom, ground floor apartment, occupying an excellent position within the sought after Hanbury Place Development. New to the market and offered for sale with a complete onward chain, this stylish apartment is also conveniently positioned just a few minutes drive from the Chelmsford City Centre, lending itself perfectly to both first time buyers and buy to let investors alike.



# Property Details.

## Entrance Hall



## Living Room/Kitchen/Diner



24' 0" x 12' 7" (7.32m  
x 3.84m)

# Property Details.

## Bedroom



13' 3" x 10' 11"  
(4.04m x 3.33m)

## Bathroom



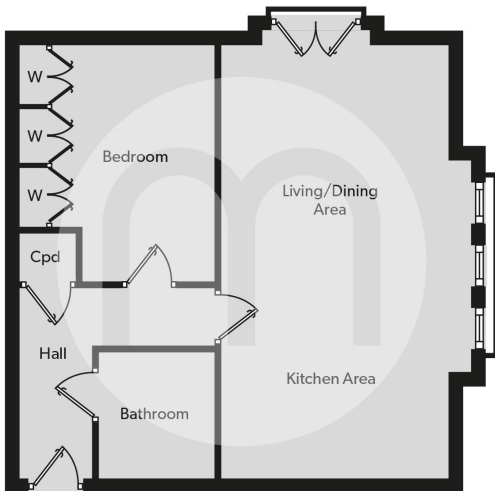
7' 2" x 6' 6" (2.18m x  
1.98m)

## Communal Gardens

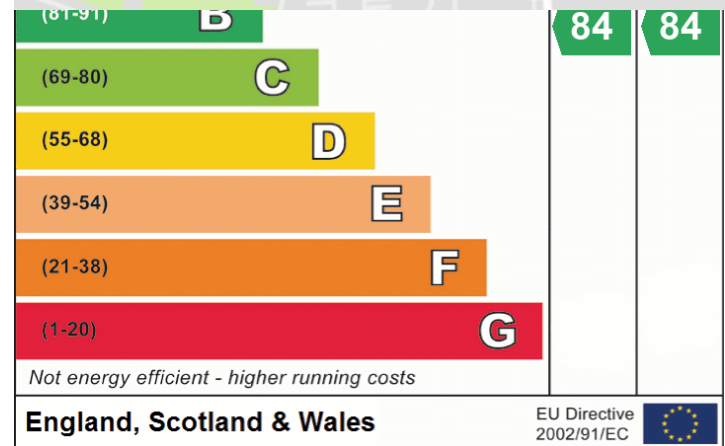
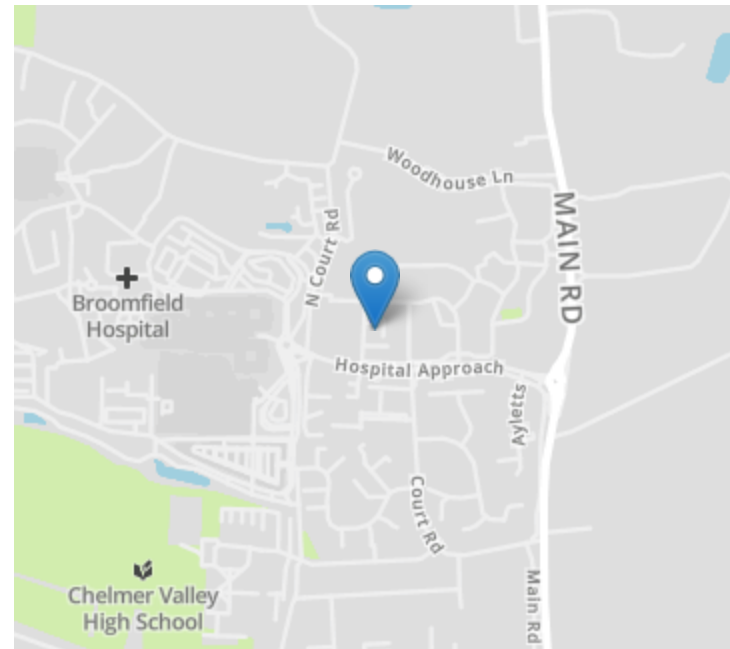
## Allocated Parking Space

# Property Details.

## Floorplans



## Location



We have not carried out a structural survey and the services, appliances and specific fittings have not been tested. All photographs, measurements, floor plans and distances referred to are given as a guide only and should not be relied upon for the purchase of carpets or any other fixtures or fittings. Gardens, roof terraces, balconies and communal gardens as well as tenure and lease details cannot have their accuracy guaranteed for intending purchasers. Lease details, service ground rent (where applicable) are given as a guide only and should be checked and confirmed by your solicitor prior to exchange of contracts.