







Key Features

 2 Bedrooms

 2 Public

 1 Bathroom

- A well-presented, two bedroom end terraced villa located within the Fife village of Lochgelly
- Centrally located within the village, David Street offers walking distance to several local primary school and access to local facilities including The Lochgelly Centre, Golf Club, Bowling Club and local shops
- Transport links making this an ideal location for commuters, with the A92 and M90 a short distance away and Lochgelly railway station within easy reach.
- Nearby towns of Cowdenbeath, Kirkcaldy and Dunfermline have extensive amenities and are within easy reach by car, bus or train
- Hallway with storage, leading to family room and WC
- Living room to the rear with access to kitchen with a range of storage options and white goods included within the sale. Access onto enclosed gardens
- Modern shower room on the first floor with double shower unit, WC and wash hand basin
- Two double bedrooms with built in mirrored wardrobes available
- Easy maintenance rear gardens with a large storage shed to the rear of the gardens
- A perfect first time home and viewing comes highly recommended
- EPC – D
- Council Tax – B





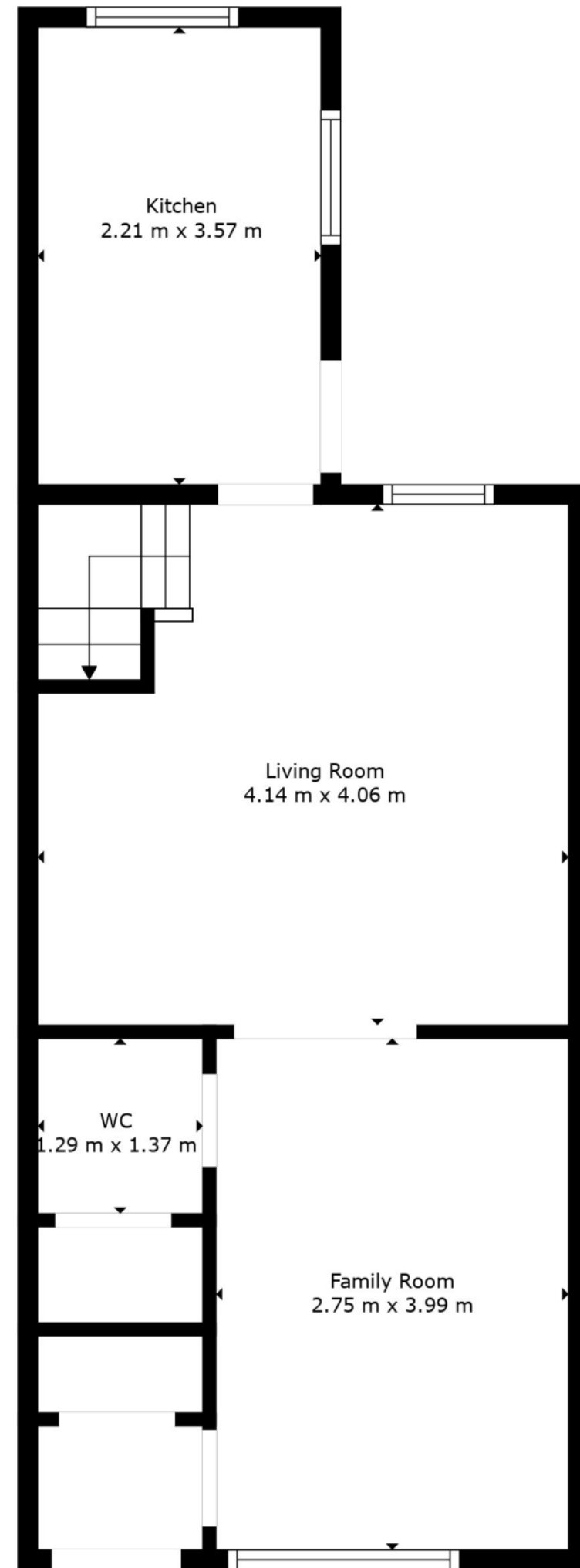
Location

Nestled in the heart of Fife, Lochgelly is a thriving community and an ideal location for first-time buyers, families, and investors alike, boasting excellent transport links, local amenities, and scenic surroundings.

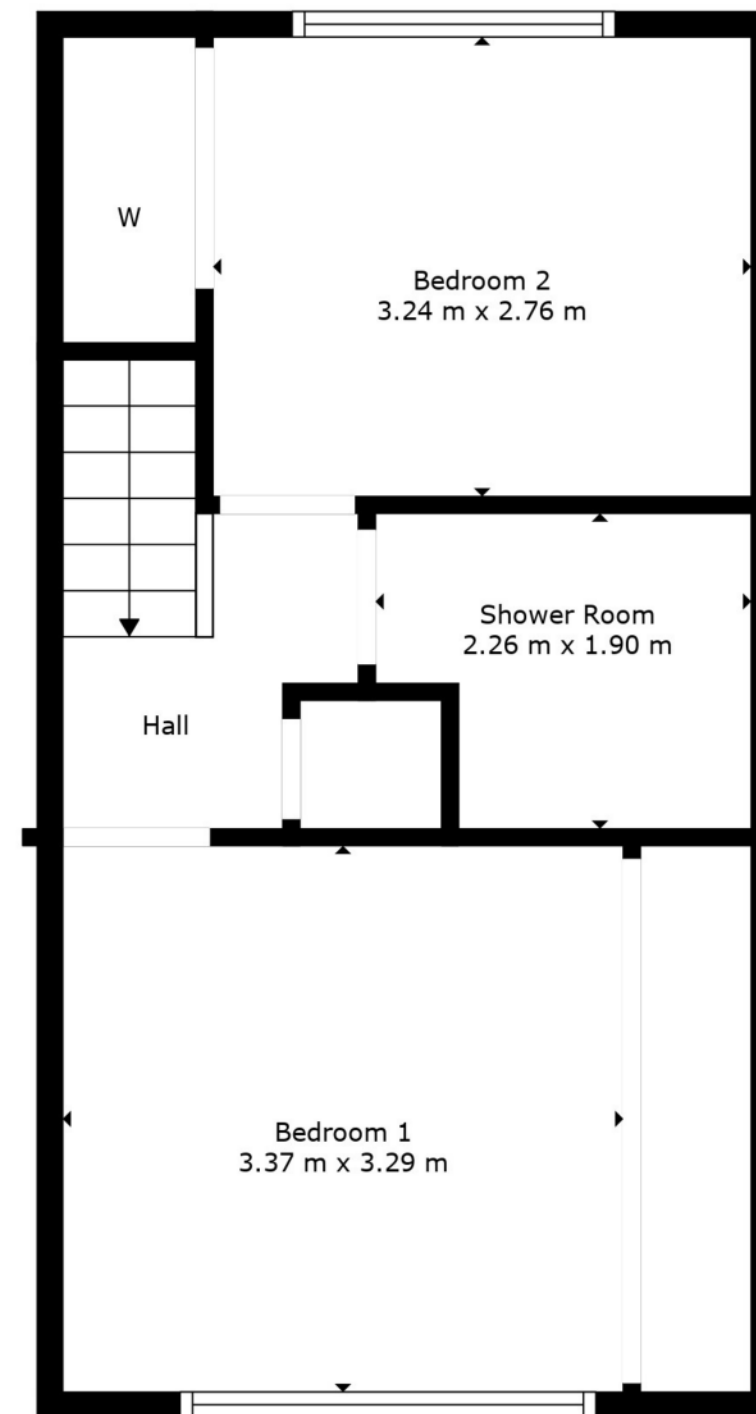
With a variety of property types available—from traditional stone-built homes to modern new builds—Lochgelly provides options to suit a range of buyers. The town benefits from its close proximity to the A92, offering easy access to Dunfermline, Kirkcaldy, and Edinburgh, making it perfect for commuters seeking a more affordable home without compromising on connectivity.

Lochgelly also boasts an array of local amenities, including supermarkets, independent shops, schools, and healthcare facilities. For those who enjoy the outdoors, nearby Lochore Meadows Country Park provides excellent opportunities for walking, cycling, and water sports. Additionally, the village has a strong sense of community, with local events, sports clubs, and social groups making it a welcoming and vibrant place to call home.





Floor 1



Floor 2

Floor Plan Created By Cubicasa App. Measurements Deemed Highly Reliable But Not Guaranteed.



Enquiries

 01383 629720

 info@maloco.co.uk

 maloco.co.uk



Floorplans are for illustrative purposes only. Measurements are deemed highly reliable but not guaranteed.