

NEWBURY PARK

£299,950

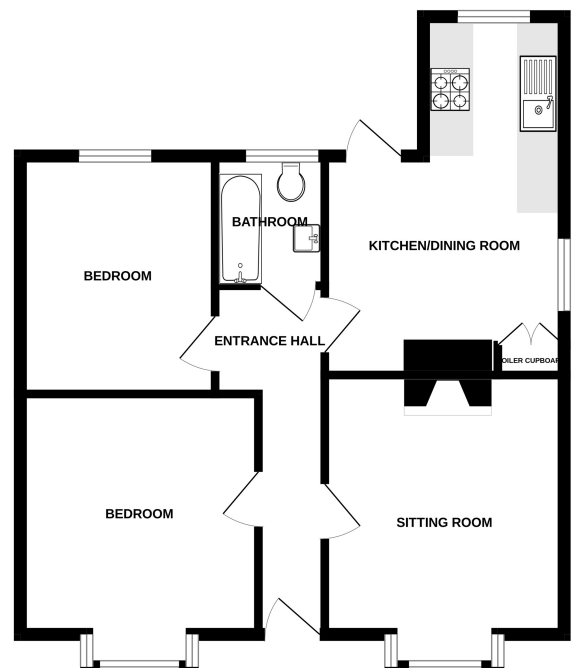


Key Features

- ✓ Two Double Bedrooms.
- ✓ Large Established Garden.
- ✓ Off Road Parking.
- ✓ Scope for updating.
- ✓ No Onward Chain.



GROUND FLOOR
581 sq.ft. (54.0 sq.m.) approx.



TOTAL FLOOR AREA: 581 sq.ft. (54.0 sq.m.) approx.
Made with Metropex G202.