

One Bedroom Flat
Canterbury Street, Gillingham, Kent, ME7 5XN

£950 pcm
Freehold

Canterbury Street, Gillingham, Kent, ME7 5XN

£950 pcm
Freehold

Description

Located on the popular Canterbury Street in Gillingham, this superb one-bedroom super studio ground floor apartment offers a fantastic opportunity for a single professional or couple seeking a stylish, ready-to-move-in home. The property has been thoughtfully maintained and includes the added benefit of an air conditioning unit, ensuring year-round comfort. Presented fully furnished and in excellent condition, the property is available with vacant possession and is ready for immediate occupation. The apartment has been thoughtfully designed to maximize space and comfort, featuring a bright and well-appointed living area, a modern kitchen, and a spacious bedroom area. Just off the bedroom area, there is a private shower room, where the toilet is serviced by a macerator system for added convenience and efficiency. Its ground floor position offers easy access, making it a practical choice for daily living. Situated within walking distance of Medway Hospital, the property is ideal for healthcare professionals or those seeking a central location with excellent local amenities and transport links. The apartment combines practicality with modern living and provides a low-maintenance lifestyle. Whether you're starting out on your own or moving in as a couple, this well-presented home delivers everything you need. Don't miss your chance to secure this fantastic rental opportunity. Contact our dedicated Lettings Team today to arrange your viewing and avoid disappointment.

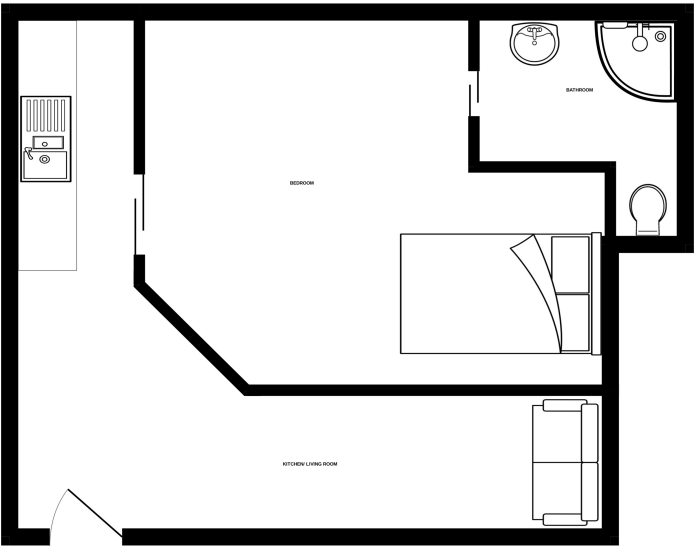
Key Features

- One bedroom super studio ground floor apartment
- Ready to move in immediately with vacant possession
- Ideal for a single professional or couple
- Within walking distance to Medway Hospital – perfect for healthcare workers
- Located close to local amenities and excellent transport links
- Private shower room off the bedroom area
- Ground floor position offers easy access and comfortable living
- Includes air conditioning unit for year-round comfort

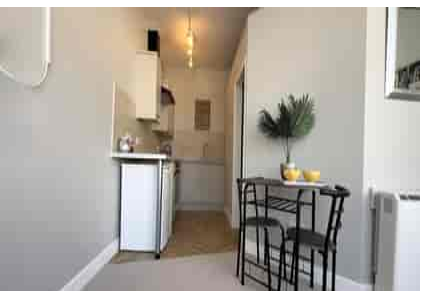
Local Area

Gillingham is a large town in the unitary authority area of Medway in the ceremonial county of Kent, England. The town forms a conurbation with neighbouring towns Chatham, Rochester, Strood and Rainham. It is also the largest town in the borough of Medway. The town grew along the road from Brompton on the great lines (military barracks), to the railway station. As such it was a linear development. Close by was the road along the shore line, linking The Strand, and the tiny village of Gillingham Green. Later,

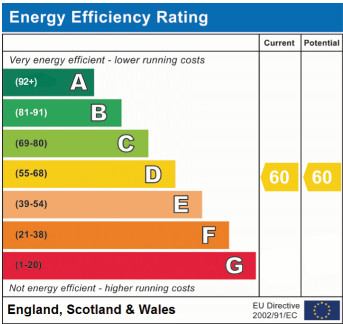
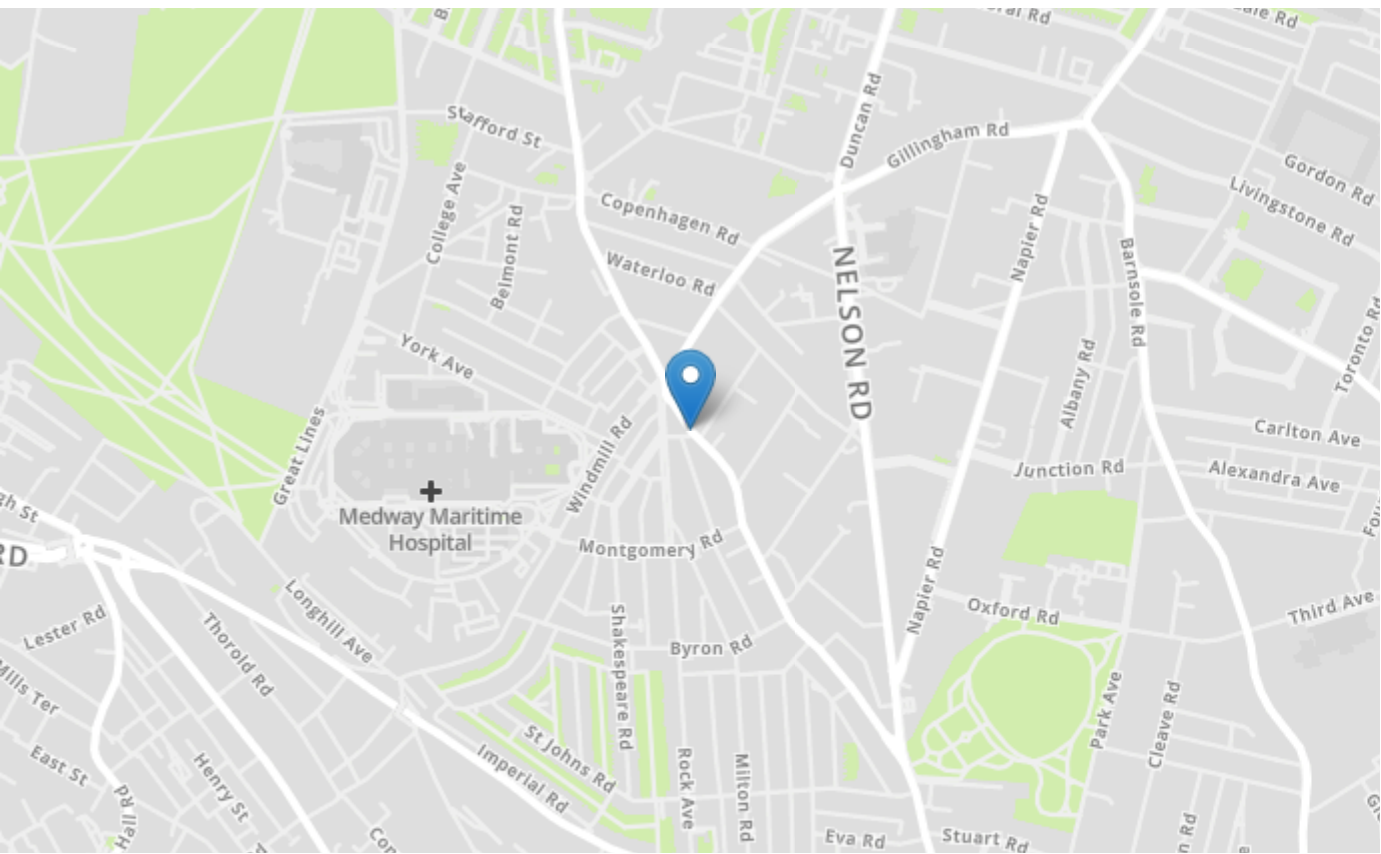
GROUND FLOOR



Whilst every attempt has been made to ensure the accuracy of the floorplan contained here, measurements of doors, windows, rooms and any other items are approximate and no responsibility is taken for any error, omission or mis-statement. This plan is for illustrative purposes only and should be used as such by any prospective purchaser. The services, systems and appliances shown have not been tested and no guarantee as to their operability or efficiency can be given.
Made with Metaplan ©2025



Property Location
Canterbury Street, Gillingham, Kent, ME7 5XN



Tenure	Freehold
Lease Term	N/A
Ground Rent	N/A
Service Charge	N/A
Local Authority	Medway Council
Council Tax	Band A

haus Estate Agents
26, London Road
Gillingham
Kent
ME8 6YX
Tel: 01634 848883 Email:
hello@haustateagents.co.uk

Agent Notes
These particulars do not form part of an offer or contract and must not be relied upon as statements or representation of fact.
The seller does not make or give nor do our employees or haus Estate Agents have authority to make or give any representation or warranty to the property. It should not be assumed that the property has all necessary planning, building regulation or other consents and we have not tested any services, equipment, or facilities. All photographs, measurements, floorplans and distances referred to are given as a guide only and should not be relied upon for the purchase of carpets or any other fixtures or fittings. References to tenure, service charges and ground rent (where applicable) as well as council tax are based on information supplied by the seller.
The Buyer should verify all information themselves by inspection or otherwise prior to a legal commitment to purchase. The copyright of all details, photographs and floorplans remains exclusive to haus Estate Agents. If you require clarification or further information on any points, please contact us, especially if you are travelling some distance to view.