

Boreham Road

Warminster, BA12 9HD

COOPER
AND
TANNER



£200,000 Freehold

🛏 3 🛋 1 🚿 1 EPC G

Description

A three bedroom end of terrace Victorian family home, situated towards the outskirts of Warminster and in need of modernisation and updating. The property offers accommodation arranged over three floors and an enclosed garden to the rear. In brief the accommodation comprises lounge with open fireplace, kitchen/diner with the stairs rising to the first floor, downstairs bathroom and a utility area with door to the garden. To the first floor is the main bedroom which is dual aspect and bedroom two which has a staircase rising to the third bedroom.



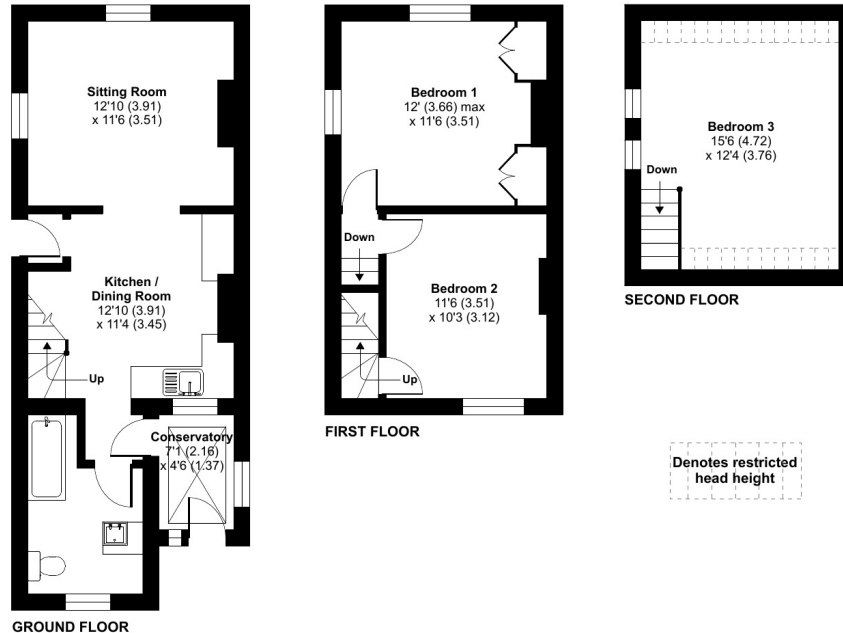
Boreham Road, Warminster, BA12

Approximate Area = 904 sq ft / 83.9 sq m

Limited Use Area(s) = 21 sq ft / 1.9 sq m

Total = 925 sq ft / 85.9 sq m

For identification only - Not to scale



Floor plan produced in accordance with RICS Property Measurement Standards incorporating International Property Measurement Standards (IPMS2 Residential). © nichecom 2022. Produced for Cooper and Tanner. REF: 926833

Features

- Victorian end of terrace family home
- In need of modernisation and updating
- No onward chain
- Arranged over three floors
- Lounge
- Kitchen/diner
- Three bedrooms
- Bathroom
- Garden to the rear

Local Information

- Council Tax Band B
- Tenure Freehold
- EPC Rating G

WARMINSTER OFFICE

Telephone 01985 215579

48-50, Market Place, Warminster, Wiltshire BA12 9AN

warminster@cooperandtanner.co.uk

**COOPER
AND
TANNER**

Important Notice: These particulars are set out as a general outline only for the guidance of intended purchasers and do not constitute, nor constitute part of, an offer or contract. All descriptions, dimensions, reference to condition and necessary permissions for use and occupation, warranties and other details are given without responsibility and any intending purchasers should not rely on the m as statements or representations of fact but must satisfy themselves by inspection or otherwise as to the correctness of each of them.

