



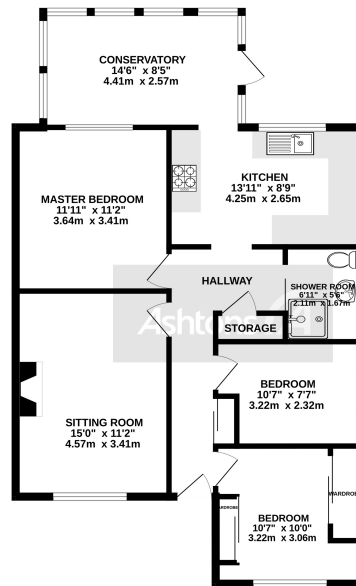
*66 Paisley Avenue, St Helens, Merseyside. WA11
9QW.
£175,000*



Low Maintenance Front and Rear Gardens | Detached Garage And Driveway | Quiet & Convenient Location | Close Access to Transport Links And Amenities | Conservatory | Freehold | Council Tax Band C | True Bungalow |



GROUND FLOOR
859 sq.ft. (79.8 sq.m.) approx.



TOTAL FLOOR AREA: 859 sq.ft. (79.8 sq.m.) approx.
While every effort has been made to ensure the accuracy of the floorplan contained here, measurements of plots, windows, rooms and any other areas are approximate and no responsibility is taken for any error, omission or mis-statement. This plan is for illustrative purposes only and should be used as such by any prospective purchaser. The services, fixtures and appliances shown here are not intended and no guarantee is to be made, availability of fixtures can be given.
Made with Metagap ©2022

Spacious true bungalow for sale with the added bonus of no onward chain. Offering well appointed living space and access to local amenities this lovely home comprises ; entrance hallway, large lounge area, three bedrooms , shower room and kitchen which leads in to the conservatory. Externally there are easy to maintain paved gardens to the front and rear and also driveway and garage to the side. This property really has alot to offer and with just a little bit of modernisation has the potential to become someone's perfect home.

Get a Mortgage: We have an Independent Mortgage Advisor based in EVERY Ashtons Office. We can search over 90 lenders to ensure that we find the most suitable mortgage for your circumstances. Interested? Call your local office. AS A MORTGAGE IS SECURED AGAINST YOUR HOME, IT COULD BE REPOSSESSED IF YOU DO NOT KEEP UP THE MORTGAGE REPAYMENTS



Contact your local office to arrange a viewing:

Padgate: 01925 479334
Great Sankey: 01925 454300
Winwick: 01925 232146
Stockton Heath: 01925 453400
St.Helens: 01744 754120
Wigan: 01942 498862
Culcheth: 01925 764744
Ashton-In-Makerfield: 01942 364446
Newton-Le-Willows: 01925 907770
Commercial Office: 01925 907709
Lettings Head Office: 01925 873533
Financial Services: 01925 221234

Viewing Arrangements

Viewing is strictly by appointment only through Ashtons Estate Agency.

Disclaimer Property Details

These particulars, whilst being believed to be accurate are set out as a general outline only for guidance and do not constitute any part of an offer or contract. Intending purchasers should not rely on them as statements of representation of fact, but must satisfy themselves by inspection or otherwise as to their accuracy. We have not carried out a detailed survey nor tested the services, appliances and specific furnishings. The measurements given are approximate. No person in this firms employment has the authority to make or give any representation or warranty in respect of the property.

All details, photographs and floorplans are the copyright of Ashtons Estate Agency.



How much you can borrow?
Speak to a mortgage expert in your local office.

Ashtons Financial Services

Ashtons.net rightmove

PrimeLocation.com Zoopla.co.uk

Ashtons