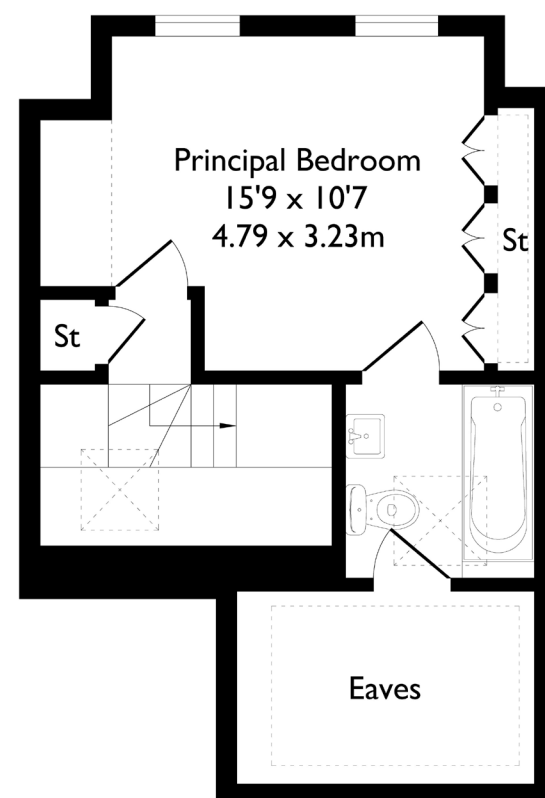
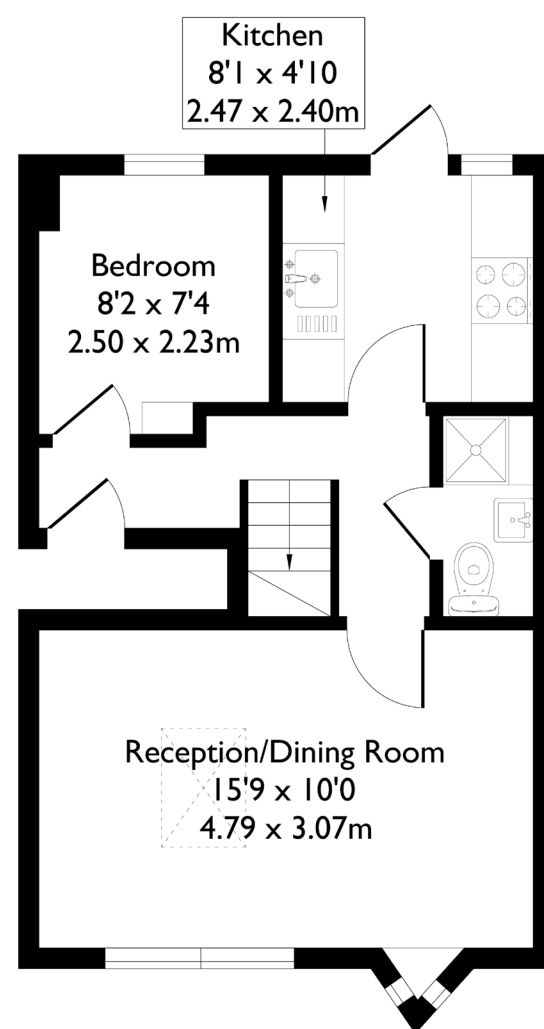


Convent Gardens, London, W5

Approximate Floor Area = 57.2 sq m / 616 sq ft



2 BEDROOM FLAT

Convent Gardens, W5
£500,000

Welcome to this beautifully presented split-level flat in the heart of Ealing.

The property offers two well-proportioned bedrooms, a contemporary shower room on the lower level, and a family bathroom upstairs serving as an en-suite to the principal bedroom.

FEATURES

- Two Bedrooms
- Two Bathroom/Shower room
- Separate Kitchen/Dining
- Northfield Amenities
- Northfields Station
- Ealing Fields High School/
Mount Carmel Primary School
- EPC Rating C



2 BEDROOM FLAT

Convent Gardens, W5

On entering the flat, you are greeted by the first bedroom, followed by a fully fitted kitchen featuring a charming stable door.

The spacious reception room provides clearly defined living and dining areas, enhanced by double windows and a skylight that flood the space with natural light. The upper level hosts an impressive master suite, creating a private and comfortable retreat.

The property has been recently redecorated throughout and is presented in turnkey condition, ready for immediate occupation. Ideally located, the flat is just a 10-minute walk from Northfields Underground Station and a range of local amenities. It also falls within the sought-after catchment areas for Little Ealing Primary School, Mount Carmel Catholic Primary School, and Ealing Fields High School. Excellent road links are close by, with easy access to the Great West Road providing a direct route into Central London.

EPC Rating C.

