



Wroxham Gardens, Potters Bar, Hertfordshire, EN6 3DL

£659,950

- A RARE DETACHED 1930'S STYLE HOME
- 1 MILE TO POTTERS BAR MAINLINE STATION
- WEST FACING GARDEN
- POTENTIAL FOR REAR EXTENSION (STPP)
- CLOSE TO M25 AND A1(M)
- GOOD SCHOOL CATCHMENT AREA
- CLOSE TO SHOPS AND TRANSPORT
- OFF STREET PARKING X 2
- POTENTIAL FOR LOFT

108, High Street, Potters Bar, EN6 5AT

01707 245 555

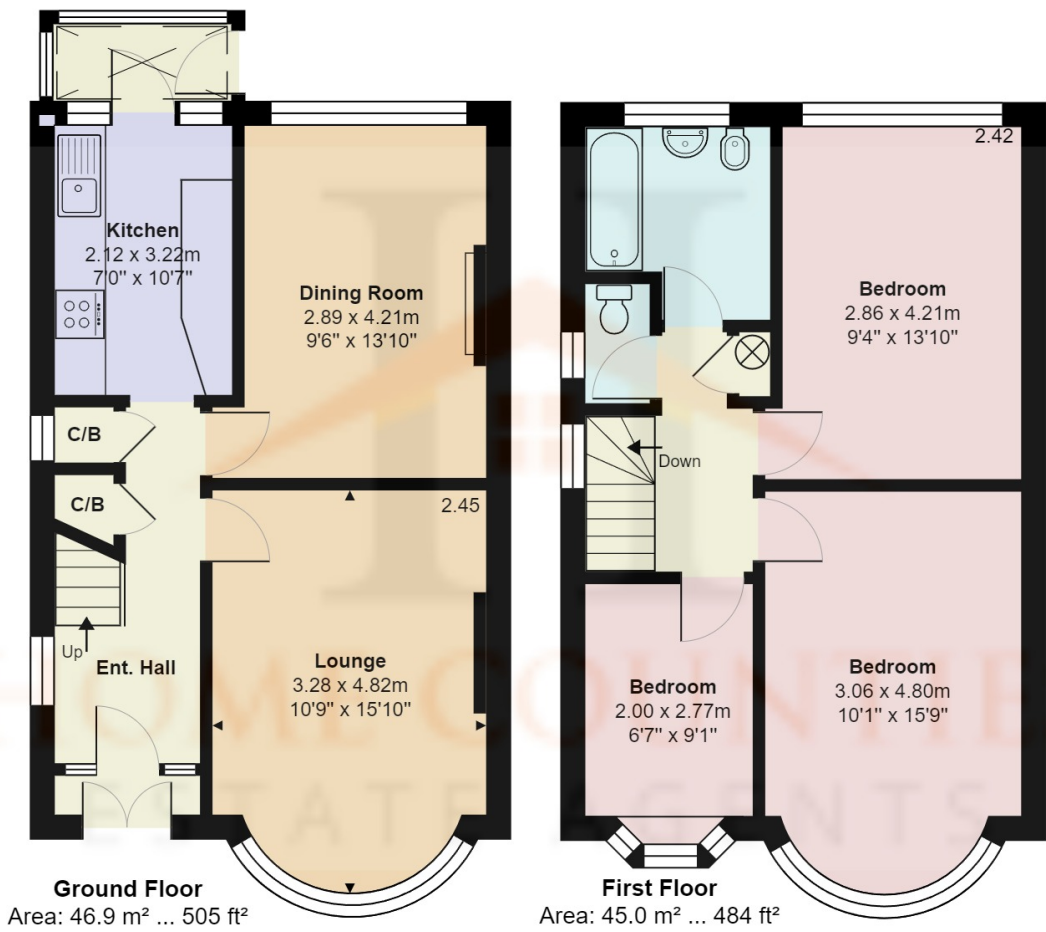
www.home-counties.com

Wroxham Gardens, Potters Bar, Hertfordshire, . EN6 3DL

£659,950

A Rare Detached Three bedroom family home located on Wroxham Gardens, moments from Wroxham Primary School, local shops and amenities and Furze Field Leisure Centre. The home was built in 1947 and is one of the only detached three bedroom homes of its kind in and around the Auckland area. The property features spacious entrance hall, lounge to the front with large bay window, dining room to the rear and separate galley kitchen to the rear. The first floor consists of two double bedrooms front and rear, a single bedroom and separate toilet plus family bathroom.

Externally the home features off street parking, a west facing garden and side access.



Wroxham Gardens, Hertfordshire EN6

Total Area: 91.9 m² ... 989 ft²

All measurements are approximate and for display purposes only

