

Truuli



Shropshire Close, Mitcham, Surrey, CR4

£400,000 Freehold

- Two bathrooms
- Garage
- Communal play area
- Large and inviting kitchen dining room
- Private balcony from living room

2, Lansdowne Road, Croydon, Croydon, CR9 2ER

Tel: 0330 043 0002

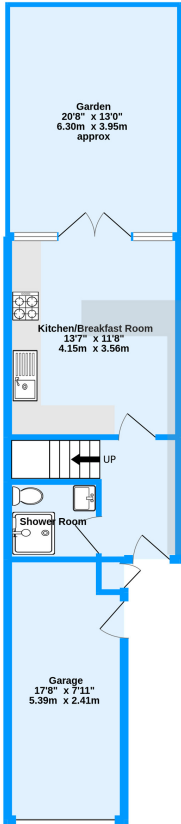
Email: save@truuli.co.uk Web: www.truuli.co.uk

Shropshire Close, Mitcham, Surrey, CR4

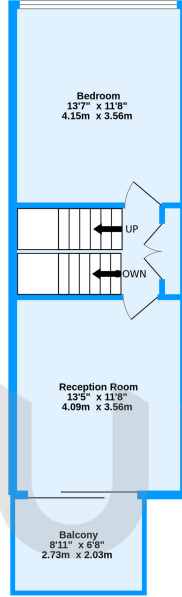
£400,000 Freehold

*** Vendor comments *** ". The houses on the development appear like a Tardis on the outside but are very spacious inside. Also, as opposed to one bathroom for the house, there is also a shower downstairs. I have had families, and single professional people living at the address, and some have lived there for 3 to 6 years....."

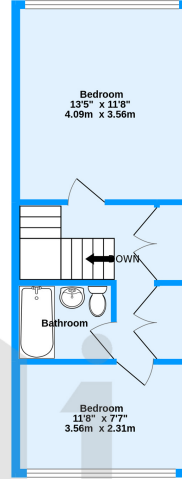
Ground Floor
396 sq.ft. (36.8 sq.m.) approx.



1st Floor
389 sq.ft. (36.1 sq.m.) approx.



2nd Floor
372 sq.ft. (34.5 sq.m.) approx.



Shropshire Close, Pollards Hill, CR4
TOTAL FLOOR AREA: 1156 sq.ft. (107.4 sq.m.) approx.
Measurements are approximate. Not to scale. Illustrative purposes only
Made with Metropix 62022

