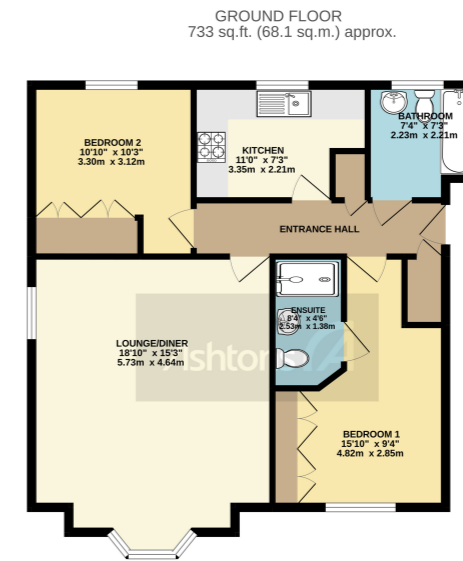
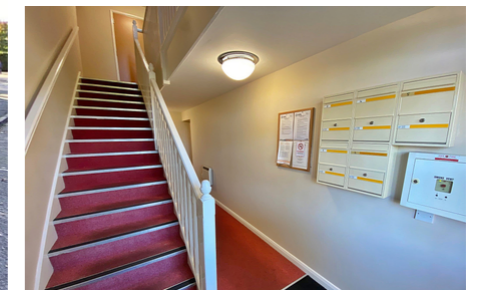


Birchdale Court, Birchdale Road, Appleton, £275,000



TOTAL FLOOR AREA: 733 sq.ft. (68.1 sq.m.) approx.
Measurements are given for information only and are not intended to be used for any legal purpose. Measurements are taken from the internal face of walls and doors are shown open. All dimensions are approximate and should not be relied upon for any legal purpose. All dimensions are given in feet and inches and in metres and millimetres. All dimensions are given to the nearest millimetre.



****SOUGHT AFTER LOCATION - FIRST FLOOR APARTMENT - TWO DOUBLE BEDROOMS - TWO BATH/SHOWER ROOMS - WALK-IN CONDITION - ALLOCATED PARKING****

 x 2  x 2

See more of this house at ashtons.net

